



# PLUMPTON HIGH SCHOOL

Artwork by Student: Maxene Pineda



# HIGH SCHOOL HANDBOOK

# 2024

# YEAR

# 7



CRICOS Provider Name: NSW Department of Education  
CRICOS Provider Number: 00588M

NAME: \_\_\_\_\_

---

# ***Handbook Table of Contents***

---

<b>MEET SOME OF THE TEAM</b> .....	<b>6</b>
SENIOR EXECUTIVE .....	6
SUPPORT STAFF .....	6
HEAD TEACHERS .....	7
<b>IMPORTANT DATES</b> .....	<b>8</b>
INFORMATION NIGHT – TUESDAY 21 NOVEMBER, 2023 –5:30PM – 6:30PM .....	8
ORIENTATION DAY – TUESDAY 28 NOVEMBER, 2023 –9:00AM – 2:00PM .....	8
THE FIRST DAY OF HIGH SCHOOL – Thursday 1st February 2024 –8.40AM – 2.45PM .....	8
<b>YEAR 7 CURRICULUM</b> .....	<b>9</b>
PROJECT BASED LEARNING.....	9
POSITIVE PSYCHOLOGY .....	9
ACCELERATED READER .....	10
ENGLISH .....	11
HUMAN SOCIETY AND ITS ENVIRONMENT (HSIE) .....	11
LANGUAGES .....	12
MATHEMATICS.....	12
MUSIC .....	13
PERSONAL DEVELOPMENT, HEALTH AND PHYSICAL EDUCATION (PDHPE) .....	13
SCIENCE .....	13
TECHNOLOGY AND APPLIED STUDIES (TAS).....	14
<b>NAVIGATING THE HIGH SCHOOL MAZE</b> .....	<b>15</b>
TIMETABLE .....	15
SCHOOL MAP .....	16
<b>SCHOOL FEES</b> .....	<b>17</b>
<b>PACKED FOR LEARNING (P4L)</b> .....	<b>18</b>
<b>A POSITIVE MINDSET</b> .....	<b>19</b>
<b>SUPPORT NETWORK</b> .....	<b>23</b>
POSITIVE PSYCHOLOGY TEACHERS .....	23
SCHOOL COUNSELLOR .....	23
ABORIGINAL EDUCATION OFFICER.....	23
COMMUNITY LIAISON OFFICER .....	24
DA VINCI CENTRE .....	24
ENGLISH AS AN ADDITIONAL LANGUAGE/DIALECT .....	24
LIBRARY (DA VINCI LEARNING & RESOURCE CENTRE) .....	25
SPECIAL EDUCATION – SUPPORT UNIT .....	25
<b>REPRESENTING PLUMPTON HIGH SCHOOL IN SPORT</b> .....	<b>26</b>
KNOCKOUT COMPETITIONS AND GALA DAYS .....	26
SPORT CARNIVALS .....	26
<b>EXTRA CURRICULAR PROGRAMS</b> .....	<b>27</b>
DUKE OF EDINBURGH .....	27
GIFTED & TALENTED ART AND DESIGN.....	27
GIFTED & TALENTED PEC DANCE .....	27
GIFTED & TALENTED PEC DRAMA .....	28
GIFTED & TALENTED ENGINEERING STUDIES (STEM) .....	28
GIFTED & TALENTED EXPERIMENTING WITH STEM .....	28
THE GARDEN CLASSROOM .....	28

GIFTED & TALENTED FORENSIC SCIENCE (STEM).....	29
GIFTED & TALENTED MUSIC PERFORMANCE .....	29
GIFTED & TALENTED TAIKO DRUMMING .....	29
GIFTED & TALENTED COMPUTER SCIENCE .....	30
GIFTED & TALENTED ROBOTICS (STEM).....	30
GIFTED & TALENTED MAC TEAM .....	30
<b>MOBILE PHONE &amp; ELECTRONIC DEVICE POLICY .....</b>	<b>31</b>
<b>YONDR POUCH IMPLEMENTATION FREQUENTLY ASKED QUESTIONS .....</b>	<b>33</b>
<b>GENERAL INFORMATION .....</b>	<b>35</b>
ATTENDANCE .....	35
ABSENCES.....	35
LATE ARRIVAL OR EARLY LEAVING FROM SCHOOL.....	35
PERMISSION TO LEAVE THE SCHOOL GROUNDS.....	35
STUDENTS SICK AT SCHOOL.....	36
MEDICATIONS.....	36
UNIFORM INFORMATION .....	36
<b>FREQUENTLY ASKED QUESTIONS .....</b>	<b>38</b>

# Welcome from the Principal

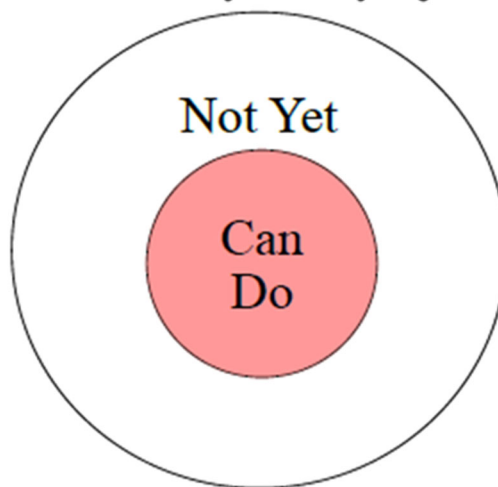
To Year 7, 2024



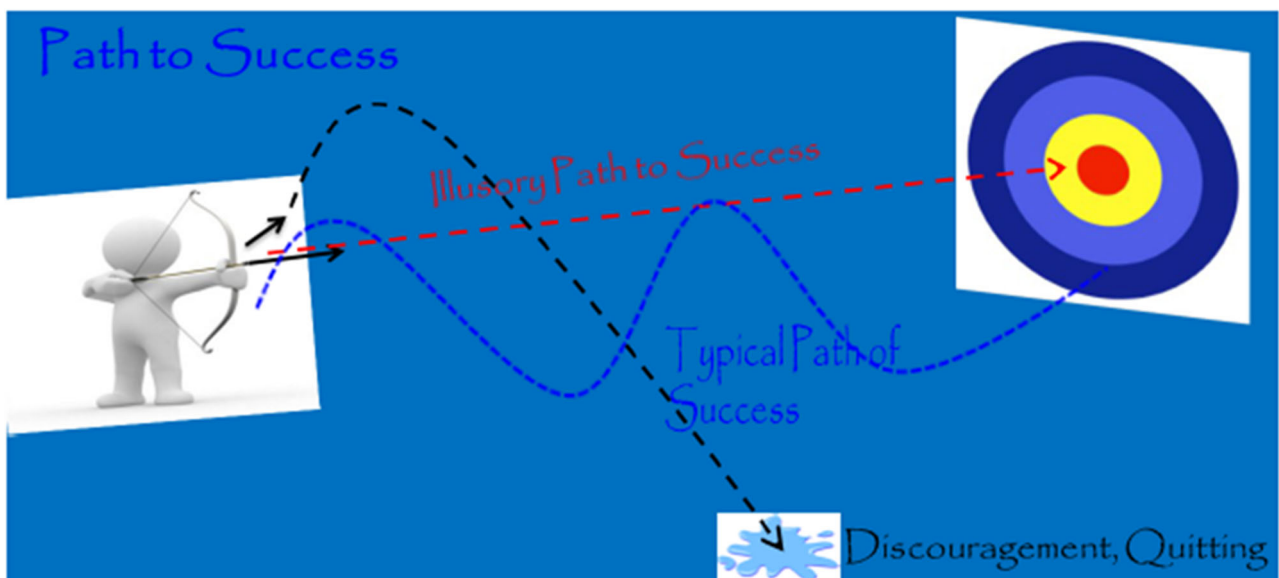
Dear Students,

Plumpton High School and our staff have a passion for learning and we are dedicated to ensuring that you, as one of our students, achieve your own 'PERSONAL EXCELLENCE' in all areas of school life. We want you as a student to say 'YES' to opportunities that are offered at Plumpton and understand that there are things you 'CAN DO' and things you have 'NOT YET' achieved. You will achieve your 'PERSONAL EXCELLENCE & SUCCESS' with courage, determination, commitment, resilience and hard work and by taking personal responsibility to become 'THE BEST YOU CAN BE'. We encourage you to achieve this individually and collaboratively .

**Success is any time I try to grow.**



Your journey to 'PERSONAL EXCELLENCE & SUCCESS' will be exciting and rewarding, but it is not a straight line. Any person who is successful in the world has taken significant risks, been courageous, determined and failed many times previously. We only ever know about them when they are successful. Your journey to 'PERSONAL EXCELLENCE & SUCCESS' is going to involve a combination of success and failure because you have challenged yourself to attempt to solve more complex problems than you have previously, whether that be in mathematics, science, sport, computer science, relationships and personal wellbeing etc...





The School's vision is based on the premise that excellence comes when students and staff commit to becoming the best they can be, contributing to the local and global community in a meaningful way. Plumpton believes this goal can be best realised within a supportive, innovative, creative and stimulating educational environment focussed on building intellectual capacity, positive relationships and the ability to engage in genuine reflection.

Our innovative teaching and learning programs and Positive Psychology wellbeing structure have been developed to ensure that all students can achieve their potential. There are significant opportunities available to students in addition to their timetabled study program. We want our students to seek out these extra-curricular opportunities that will also contribute significantly to their life success.

Some of these opportunities include:

• Gifted and Talented Forensic Science, Technology, Engineering and Mathematics (STEM) Club	• Gifted and Talented Computer Coding for App, Game writing and Robotics Club (STEM)
• Gifted and Talented Media and Communications (MAC) Club	• Gifted and Talented Art and Design Club
• Gifted and Talented Engineering and Technology Club	• Gifted and Talented Dance Club
• Gifted and Talented Drama Club	• Duke of Edinburgh Scheme (All year 9)
• Student Executive Council (SEC)	• The Garden Classroom
• Representative Sport	• Chess Club
• Debating and Public Speaking	• Corporate Mentoring

We are also proud to be a member of the Plumpton Education Community (PEC), formed in 2006 and consisting of Plumpton High School, Glendenning Public School, Plumpton Public School and William Dean Public School. PEC was developed to better serve the needs of the students of our community. We are committed to providing a range of excellent and innovative programs designed to meet the educational needs of students. We aim to ensure each child has an exciting, safe, rich learning environment that will assist them to achieve their personal excellence in all areas of their school life.

There will also be a number of students who will be coming to Plumpton High School in 2024 from other primary schools. We welcome you and your families to the Plumpton Education Community.

You are encouraged to read the following information. Please feel free to contact members of Plumpton High School if you wish to discuss further any of the information. We look forward to seeing all students and parents as we formally welcome you to Plumpton High School.

Tim Lloyd, Principal

Australian Principal of the Year 2019 – Government Schools

Australian Innovative Schools Winner 2019, 2020

T4 World Education Week Presenter 2021

Former National Coach Gymnastics Australia - Coach of World Champion

# • MEET *some of the* TEAM •

RESPONSIBLE FOR MAKING THE MAGIC HAPPEN



**Tim Lloyd**  
Principal



**Claire Leihn**  
Deputy Principal  
Years 9 & 12



**Sally Freshwater**  
Deputy Principal  
Years 8 & 11



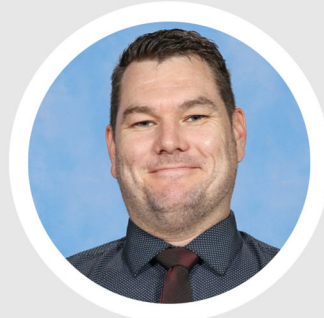
**TBC**  
Deputy Principal  
Years 7 & 10



**Jess Page**  
HT Teaching & Learning



**Bronwyn Bailey**  
HT Teaching & Learning



**David Streatfeild**  
HT Wellbeing



**Ric Aguiar**  
HT Mentor



**Debbie Nash**  
HT Administration



**Allison Clark**  
HT Special Education



**Edan Caramancion**  
HT Secondary Studies



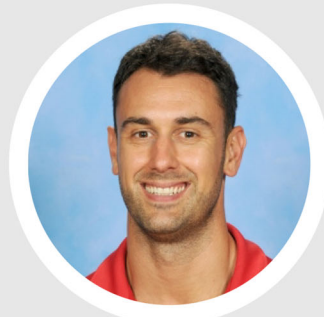
**Hayley O'Brien**  
HT CAPA



**Jack DePaoli**  
HT HSIE



**Shalveena Prasad**  
HT Mathematics



**Daniel Simonovski**  
HT PDHPE



**Katherine Gonzaga**  
HT English



HT = Head Teacher • CAPA = Creative & Performing Arts • HSIE = Human Society & Its Environment  
PDHPE = Personal Development, Health and Physical Education





# • MEET *some of the* TEAM •

RESPONSIBLE FOR MAKING THE MAGIC HAPPEN



**Tina Linaris**  
HT Science



**Nigel Shakespeare**  
HT TAS



**Bronwyn Bailey**  
Teacher Librarian



**Karlene Rex**  
AEO



**Lance Taulia**  
CLO



**Priyanka Karan**  
Futures Centre Coordinator



**Jodie Styles**  
School Psychologist



**Nina Smith**  
School Psychologist



**Gary Irvine**  
Student Support Officer



**Mirachael Racela**  
SEC Coordinator



**Edan Caramancion**  
SEC Coordinator



**TBC**  
SEC Coordinator



**TBC**  
Head of House - Danger



**Ben Porritt**  
Head of House - Halkirk



**Thomas Kelly**  
Head of House - Karinga



**Quinton Single**  
Head of House - Woodstock



TAS = Technology & Applied Studies • SEC = Student Executive Council Coordinator  
CLO = Community Liason Officer • AEO = Aboriginal Education Officer



---

## ***Important Dates***

---

### **Information Evening – Tuesday 21 November, 2023 – 5.30pm – 6.30pm**

All students and parents are invited to the Plumpton High School Information Evening. This is an important evening where parents and students will have the opportunity to learn more about Plumpton High School, the programs available, meet some of the staff and have any questions answered. The school uniform shop will be open from 3pm-5pm if you would like to purchase any school uniform on this day. The Front office will be open to purchase book packs.

### **Orientation Day – Tuesday 28 November, 2023– 8.45am – 2:00pm**

All year 6 students are invited to the Plumpton High School Orientation Day with the theme “New Beginning”.

Students will:

- participate in ‘taster’ lessons to gain a better understanding of what a high school lesson entails
- meet the student leaders
- meet classroom teachers from Plumpton High School
- become familiar with the school environment
- Please bring morning tea and a bottle of water
- BBQ lunch will be provided

Please be advised that students will not be able to access the Plumpton High School canteen on Tuesday 28th November.

Please ensure that your child is in school uniform so that they are easily identifiable and able to return to school at the completion of orientation, if applicable. Plumpton High School facilities including the uniform shop and the school office will be open for (book pack) payments from 8:00am to 3:00pm during the Orientation Day.

**Students are to be dropped off by parents at the GWS at 9am and picked up from the GWS at 2:00pm.**

### **The First Day of High School – Thursday 1st February 2024 – 8.40am – 2.45pm**

- Students should meet on the basketball courts when the bell goes at 8:40am.
- Items to bring:
  - \*A school bag that will hold the A4 Project Based Learning Folder
  - \*(keep your bag with you at all times)**
  - \*This Year 7 High School Handbook
  - \*Something to eat at lunch 1 and lunch 2 or money to buy food from the school canteen.
- There will be an assembly for the first period, where staff members will talk to students and outline activities for Week 1.
- After the assembly Year 7 students will move into classes.
- Teachers will meet their classes and take them to their Period 2 lesson.
- Students will receive their timetable during Period 2 and the teacher will help you to read and understand it.
- Students will be collected from the quad in front of the canteen at the beginning of each lesson.
- The school day will end at 2.45pm. Students will line up for their buses or start walking home.



---

## Year 7 Curriculum

---

In the first week of term we hold an orientation week for all students in the school, called O To GO. The purpose of this week is to set all students up for success for the coming year. Concepts that will be covered include:

- Project Based Learning
- An introduction to Positive Psychology
- Being a High School Student
- Collaborative learning

### Project Based Learning

In 2024 Plumpton High School will be running Project Based Learning (PBL) in all Year 7 classes. PBL is a dynamic approach to teaching in which students work collaboratively to explore and solve real-world problems and challenges.

In our school-developed PBL model, thinking is visible and ongoing assessment ensures that students only move to the next stage of learning when they can demonstrate that they have mastered the existing knowledge and skills. With this type of active and engaged learning students are motivated to think more deeply about the subjects they are studying. All activities, skills and knowledge development contribute to the creation of a final product, demonstrating the students' ability to transfer the knowledge and skills gained throughout the unit.

Teachers across all faculties have been collaborating to create projects so that compatible learning outcomes are combined. This means that students will have less assessment tasks/projects and learning is more relevant and real world focused. There will also be some stand-alone projects in each faculty to ensure that outcomes that do not naturally combine are delivered in an authentic manner.

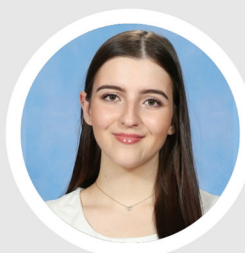
We believe that our PBL model will help students to be ready for a future workforce that calls for collaboration, critical and creative thinkers and excellent communicators. We look forward to working with you and your child as we continue with this exciting initiative.

### Positive Psychology

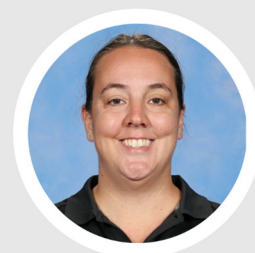
A unique feature of Plumpton High School is the introduction of 'Positive Psychology' to our Year 7 students. These classes will run two periods per fortnight with the aim of contributing towards healthy student self-concept.

Leading Teachers deliver these fun yet challenging positive psychology lessons to support general wellbeing. Our Leading Teachers are also available as a contact person if there are any issues that arise at school. Students are encouraged to use their Positive Psychology teachers as their 'teacher support person' and they will welcome any enquiries made by parents or carers.

#### Year 7 Positive Psychology Teachers are:



**Aneise Piggott**  
English Faculty



**Amanda Smid**  
PDHPE Faculty

### DaVinci (High Potential and Gifted Class) Application Process

Please see the letter in your information pack for more information about the application process. Applications can be submitted using this link: <https://docs.google.com/forms/d/19M0VQG9DH8gSXhzQTFoemoxrfZ29w7BJY7eedclgnk/edit> or scan the QR Code.



All applications that include work samples will be due by Orientation Day – 28 November 2023. Alternatively, they can complete this during Orientation Day using the available iPads during break times, but they will need to bring work samples.

## Accelerated Reader

Accelerated Reader (AR) is a computer program that helps teachers and librarians manage and monitor students' independent reading practice. The program provides educators timely, accurate information on student academic performance and growth.

Since 1986, AR has helped hundreds of thousands of teachers inspire teacher-led "reading revolutions" in their classes around the world. Teachers can use this information to quickly adjust instruction to help all of their students reach their greatest potential.

Accelerated Reader helps teachers reach all types of readers with reading/vocabulary and literacy skills quizzes. AR quizzes cover all levels of reading ability.



### How does it work?

Students in Years 7-9 will be engaged in silent reading for the first 15 minutes of every English, Science and HSIE lesson throughout the year. We strongly encourage students to read for at least 30 minutes at home as well!

Students using AR choose their own books to read, in their level, rather than having one assigned to them. This makes reading a much more enjoyable experience as they can choose books that are interesting to them. Once students finish their book, they log onto Accelerated Reader to complete the book quiz. The book quiz tests their comprehension and understanding of the story they've read. Students are given their results immediately and can check their progress.

Their results give their teachers and the AR team a snapshot of their growth and progress. Their teachers, with support from the AR team, will be setting targets for students all year to ensure they continue to improve their reading skills.

Parents/carers will receive 2 reports through the year to keep them informed of their child's progress. The reports will indicate your child's growth in their reading levels and commitment to and engagement with the reading program in class.

Students are challenged to reach goals and exceed targets. We also have the 1 Million Words Honour Roll to encourage students to challenge themselves with wider, more sustained reading.

### How can parents help?

Parents/carers can help by encouraging their child to read at school and at home. Some suggestions include:

- Asking your child what are their favourite books or preferred genre to read.
- Asking your child about their latest results in the AR program.
- Encouraging reading in lieu of playing electronic/digital games.
- Modelling reading to your child and discussing the books you like to read or enjoyed at school or beyond.
- Explaining to them how reading has benefited you in your life.

Accelerated Reader empowers teachers to improve student outcomes.

Every student can become their most amazing self and discover a lifelong love of reading with the guidance of an expert teacher and the support of the Accelerated Reader program. For more information please visit: <https://www.renaissance.com>

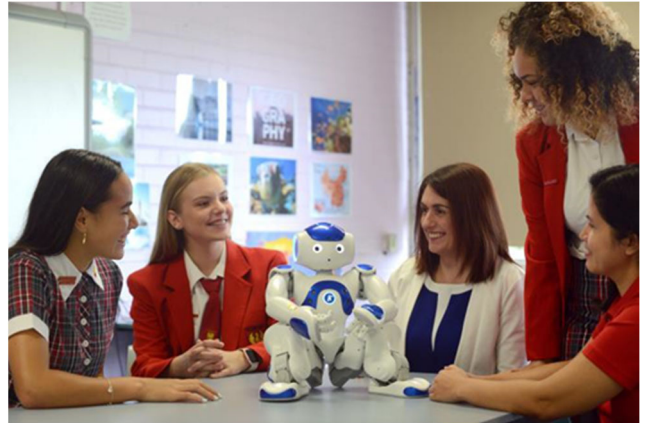


## Languages

Students with proficiency in another language can communicate more effectively in an increasingly globalised world.

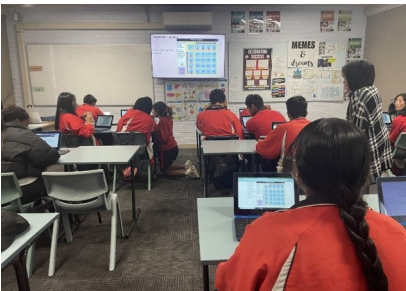
Learning a language is recommended for its contribution to the overall education of students, particularly in the areas of communication, intercultural understanding and literacy. It provides a foundation for later language learning and supports educational, career and life pathways.

Languages is in the English–literacy area of the curriculum as it strongly supports the development of literacy, language and communication skills. What we learn to do in one language helps us with any other language and strengthens all literacy practices. As such, students will study Italian as part of their curriculum at Plumpton High School.



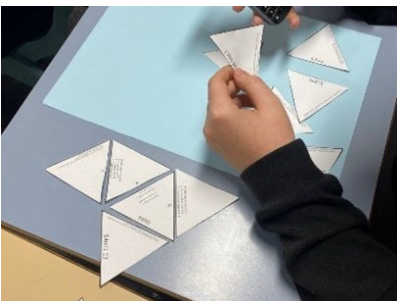
## Mathematics

Students of Mathematics in Year 7 at Plumpton High School study topics from the three strands, Number and Algebra, Measurement and Geometry and Statistics and Probability. Our lessons have a high emphasis on problem solving, communication and reasoning skills. A common syllabus is in place for all classes to follow, however we cater for individual needs and ability levels.



A student's knowledge of primary school Mathematics is revised and extended. Many of the topics studied in Year 7 contain new and interesting work with an emphasis on the practical applications of skills developed. We run differentiated learning activities where students are placed in ability levels (through a pre-test at the start of the year) and the activities are then aimed at building students' reasoning skills and multiplicative thinking. Student growth is then measured through a follow up post-test at the end of the year.

Students will also have the opportunity to integrate technology into all aspects of their learning. Plumpton High School is well resourced with computer access and Mathematical software to assist students' understanding. Students having trouble with Mathematics will be given the opportunity to receive additional assistance to achieve outcomes in Mathematics.



We encourage the students to enhance their higher order thinking by exposing them to multiplicative reasoning and targeted teaching. We do encourage competition and the pursuit of excellence.

Year 7 students at Plumpton High School gain access to a number of other competitions including:

- Australian Mathematics Competition - Juniors (Years 7-8), Intermediate (Years 9-10) and Senior (Years 11-12)
- UNSW Mathematics Competition - for Years 8-12 and exceptional Year 7s
- Australian Problem Solving Mathematics Olympiad - all Year 7
- Maths Problem Solving Club





## Music

The Year 7 Music course explores an appreciation of Music through a broad range of activities covering Performance, Musicology, Composition and Listening. Students learn basic skills on keyboard, guitar, ukulele and classroom percussion. Students also learn how to read musical notation and develop compositional skills using a range of technology. Students also analyse music through the concepts pitch, duration, structure, texture, tone colour, dynamics and expressive techniques. Music encourages students to think critically and creatively as they work on developing their skills in theory and also through practical elements of the course.



## Personal Development, Health and Physical Education (PDHPE)

Learning in PDHPE encourages young people to take a positive approach to managing their lives and equips them with skills for current and future challenges.

PDHPE has both theory and practical components. Throughout theory lessons, students in PDHPE will be engaging in learning across the following units of study:

1. Taking a Selfie – personal identity and sense of self
2. You Are What You Eat – nutrition and healthy eating
3. Let's SALSA – healthy lifestyle and physical activity
4. You.Me.We – relationships



In practical lessons, students will develop their communication, teamwork and collaboration skills, whilst improving their movement potential. PDHPE will empower Year 7 students with critical thinking skills, health literacy, as well as the knowledge to make informed decisions about leading a healthy lifestyle.

All students need to bring their red PE shirt and appropriate shoes to school and change at the beginning and conclusion of each practical lesson (see picture).

## Science

Year 7 Students will be studying the following topics:

Plumpton Pride, Wonderland, Cosmetic Chemistry and Depth Study.

As students explore these topics, they learn about the physical and chemical properties of solids, liquids and gases. They will explain how scientific understanding of, and discoveries about, the properties of elements, compounds and mixtures relate to their uses in everyday life and their impact in our environment. Students will also learn about ecosystems and the impact of humans on flora and fauna.



Students will be provided with experiences to solve problems, think critically, collaborate and report findings of experiments. Students will be using and making chemicals in the laboratories and analysing their properties to relate their properties to their uses. The study of Science in high school requires students to wear **fully enclosed leather shoes at all times in the science laboratory.**

## Technology and Applied Studies (TAS)

The study of the Technology (Mandatory) course within the TAS faculty provides students with a range of experiences using different technologies, materials and processes that are used in the development of design projects.

Students will complete design projects in the following areas:

- Woodwork – Through the design and production of a range of practical projects students develop skills in the use of woodworking tools and machine tools to produce a variety of timber projects.
- Engineering – students are introduced to the roles of engineers in improving the quality of life and are introduced to a range of engineering concepts in the production of practical projects.
- Cooking – with a focus on food technology and agricultural production students learn about the origin of the food they eat and the importance of the agriculture sector to the Australian economy. Students are introduced to kitchen operations including basic hygiene, food preparation and cooking processes. Students will be able to eat or take home what they cook.
- Textiles – through the production of a textiles product students will develop skills in planning and producing quality textiles items.
- Digital Technologies including Coding and CNC applications – students will develop computational thinking skills and develop skills in computer coding in the development of digital solutions and projects.



Students study these technologies in rotation throughout the years 7 & 8.

Student safety is our priority in these subjects and as such students are required to wear appropriate clothing including **fully enclosed shoes with firm leather uppers**. Shoes meeting these requirements are available at most shoe retailers. In addition, all students undergo intensive safety training and are required to complete mandatory safety tests prior to the commencement of practical activities.

**Acceptable Shoes:** these have full leather uppers and firm soles



**Unacceptable Shoes:** these have synthetic or fabric uppers and/or do not provide sufficient protection to the foot



Acceptable for PDHPE classes only

---

## ***Navigating the High School Maze***

---

To help you get used to your timetable, classroom changes and bell times please read through the following.

### **Timetable**

Plumpton High School runs on a rotating two week timetable, Week A and Week B. Each school term starts as Week 1A, so odd weeks of the term are always Week A.

There is a whole school assembly on Monday and it is held at the end of period two. It is important to attend assembly as it is a time that announcements are made, awards are given and students' hard work is acknowledged.

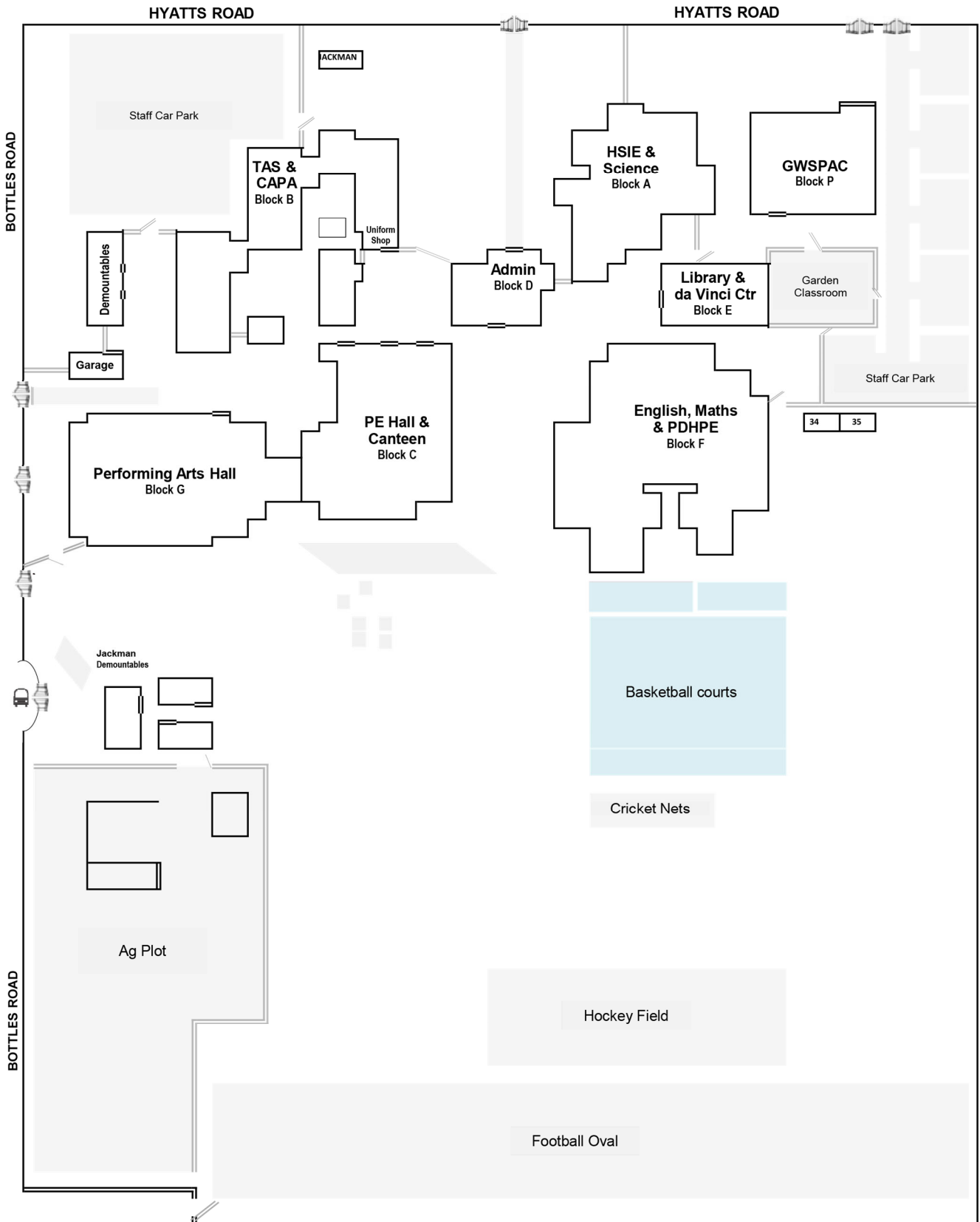
<b>Bell Times</b>							
<b>MONDAY (Assembly Day)</b>				<b>TUESDAY - FRIDAY</b>			
<b>Period 1</b>	8:40	-	9:50	<b>Period 1</b>	8:40	-	10:00
<b>Period 2</b>	9:50	-	11:00	<b>Period 2</b>	10:00	-	11:15
<b>Assembly</b>	11:00	-	11:30	<b>Assembly</b>	---	-	---
<b>Lunch 1</b>	11:30	-	12:00	<b>Lunch 1</b>	11:15	-	11:45
<b>Period 3</b>	12:00	-	1:08	<b>Period 3</b>	11:45	-	1:00
<b>Lunch 2</b>	1:08	-	1:38	<b>Lunch 2</b>	1:00	-	1:30
<b>Period 4</b>	1:38	-	2:45	<b>Period 4</b>	1:30	-	2:45

# Navigating the High School Maze

## School Map

Each building is home to a number of faculties. We do not expect you to remember this straight away. During your first week of classes you will be collected from the quad, in front of the canteen, at the beginning of each period. So you can start to familiarise yourself with the school please see the map below.

Updated Oct 2023





---

## ***School Fees***

---

In order for Plumpton High School to provide a variety of learning experiences with new and innovative technology, equipment and resources there is a resource fee. The resource fee for Year 7 is \$40.00. This fee allows the school to ensure students have access to resources for subjects such as English, Mathematics, History, Geography, Italian, etc.

In addition to the resource fee, practical subjects such as Technology and Music require the payment of a Subject Materials Contribution to cover the costs of materials used in these subjects.

All contributions can be paid off in small instalments. If this method is used, contributions are soon paid. Practical subject materials contributions can be paid at the Front Office and the receipt must be shown to the class teacher concerned.

Payments can be made via the following methods at the Front Office from 7.45am to 1.30pm:

- Cash
- EFTPOS or MasterCard/VISA
- Once parents / carers have registered for online payments (please register via this link: <https://plumpton-h.schools.nsw.gov.au/about-our-school/payment-schoolbytes.html>), they can make payments online at anytime here: <https://portal.schoolbytes.education/>
- PLEASE NOTE: We do not accept cheques.

If you are having difficulty in paying any contributions, please contact Mr Streatfeild, Head Teacher Wellbeing, preferably in writing.

<b>General School Fees</b>	<b>Annual Fee</b>	<b>Term Fee</b>
Resource Fee	\$40.00	\$10.00
Technology Fee for Industrial Arts and Home Economics i.e. Woodwork, Metalwork, Cooking, Sewing and Computer Studies	\$50.00	\$12.50
Music Fee for the servicing of instruments	\$20.00	\$5.00
Mathematics Maths Digital/Hot maths	\$25.00	\$6.25

## ***Packed for Learning (P4L)***

Each subject has very specific requirements in terms of equipment. To ensure that you are prepared it is recommended that you purchase a Book Pack from the Front Office.

The Book Pack contains all the necessary items for each subject to ensure your child is ready to learn. This will be available for purchase from the Front Office for \$70.00. Each Book Pack contains the following:



<b>Book Pack Items</b>
<b>A4 Refillable 20 Pocket Display Book (x2)</b>
<b>A4 8mm Exercise Book</b>
<b>A4 Pad-Graph 5mm Grid 128pg</b>
<b>Scientific Calculator FX-82AU PLUS II</b>
<b>Coloured Pencils – 12 pack</b>
<b>Corded Ear Plugs</b>
<b>Eraser</b>
<b>Glue Stick</b>
<b>HB Pencil (x2)</b>
<b>Highlighters – assorted 4 pack</b>
<b>Mathematics Instrument 10 piece set</b>
<b>Pencil Case (330 x 160mm)</b>
<b>Pencil Sharpener</b>
<b>Pens – Black (x2), Blue (x2) and Red (x2)</b>
<b>Plastic Ruler (30cm)</b>
<b>Safety Glasses</b>
<b>Tote Bag</b>
<b>USB (16GB)</b>
<b>Our price to you    \$70.00</b>

It is value for money to purchase the Book Pack for \$70.00. The following items can be purchased individually at the Front Office.

<b>Individual Items</b>	<b>Price</b>
Cooking Apron	\$10.00
Cooking Hat	\$5.00
750ml Water Bottle	\$3.00

---

## ***A Positive Mindset***

---

### **Celebrating Success**

Plumpton High School launched our merit system in 2018. This system enables teaching staff to recognise student achievement and success across all domains including academia, sport, performing arts and school/community service. We acknowledge that recognition of effort and success is an important tool for motivation and will drive our students to strive to achieve to their potential.

The system allows for the recognition of a wide array of student achievement, ranging from the demonstration of safe, respectful behaviour in the classroom all the way to achievement at the international level. Each merit award received contributes points to the individual student, their year group and house group. This tiered system, titled the Phoenix Challenge, also develops school spirit, increased engagement for our students and a positive learning environment at Plumpton High School.

### **Student Executive Council**

Consider yourself to be a hands on and involved person? Do you consider yourself to be a possible future leader? Then the SEC may be for you.

At Plumpton High School students are provided with multiple opportunities to contribute to their school and local community in meaningful ways. From the organising and running of events for charity, to the building of school spirit and the assistance in the spread and embracing of community values. All initiatives are student designed and led, and work in a structure overseen by the senior prefects. Students are given real hands on experiences, designed to develop real world skills, which are created to develop student capabilities and promote involvement throughout the school years, establishing pathways towards becoming future school leaders, as well as assisting in the obtaining of early entry to university and potential access to scholarships. The Student Executive Council is a busy and innovative space that encourages students to take on the challenge for Plumpton's future.

At Plumpton High School we aim to be positive, productive members of society and we strive to be the best that we can be! This is achieved by being Safe, Respectful Learners.

### **Year 7 2024 Leadership Expression of Interest**

If your child is passionate about leadership and is interested in building or continuing their development of leadership skills, please complete an expression of interest using the link below:

[https://docs.google.com/forms/d/e/1FAIpQLSd96Sc-GEwh1j-Q9PXVC7kdYAAmi1oEjs6aWWZPSv45\\_ugAwA/viewform?usp=sf\\_link](https://docs.google.com/forms/d/e/1FAIpQLSd96Sc-GEwh1j-Q9PXVC7kdYAAmi1oEjs6aWWZPSv45_ugAwA/viewform?usp=sf_link)

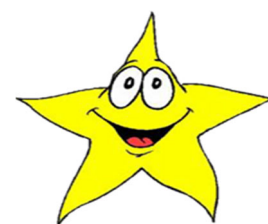
Alternatively, they can complete this during Orientation Day using the available iPads during break times.

### **Being The Best We Can Be**

At Plumpton High School, we understand that all actions have consequences. As a school, we work together in peaceful, helpful and kind ways so that the consequences of our actions are positive ones. There are many rewards for working together in such a way, including:

#### **Fulfilling My Responsibilities**

- Feeling good about ourselves and others
- Enjoying our lives at school
- Being able to participate in great learning and many school activities
- Being acknowledged for our work with merit certificates and other awards
- Being involved in leadership activities
- Being successful in our learning



---

## ***A Positive Mindset***

---

Sadly, it happens that people sometimes lose their way and forget their responsibilities to themselves and to others in our school community. We have to make sure we have good systems in place to prevent such things from negatively affecting our lives at school and our learning. Some of the consequences for people behaving badly include:

- Warnings and action by your teacher if you fail to meet the behaviour standards.
- Referral to the head teacher for action if the problem persists. This means your behaviour has reached a very serious level. It is a very strong warning to you that things must improve immediately.
- Referral to the Deputy Principal.

We cannot accept behaviours which impact negatively on our school learning environment. We each have a responsibility to be the best learners, citizens and leaders we can be. We must respect the wellbeing of others and the learning of others.

### **Can I answer YES to these questions?**



Am I in the right place?

Am I doing the right thing?

Am I being fair?

Am I being helpful?

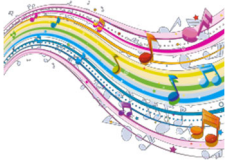



Am I being kind?






## Achieving High Behaviour Standards Together

We all have a shared responsibility to help the learning and wellbeing of each other. We need to act to prevent a small minority of students taking away the learning and wellbeing of the large majority of students.

To do this, we need to establish our standards in a number of focus areas:

Focus Area	Behaviour Standard	Outcomes
<p><b>1. Starting Lessons</b></p>   	<p>Arrive to your class meeting point within 3 minutes of the bell, with all food and drink away, and then:</p> <p>Move at the music</p> <p>Be in 2 orderly lines "In Line On Time"</p> <p>Move quietly into the room when directed</p> <p>Stand behind your chair</p> <p>Take your hat off</p> <p>Place your books, pens and equipment on your desk</p> <p>Place your phones and iPods in your Yondr pouch.</p> <p>Place your bag neatly on the floor under your chair</p> <p>Sit down when instructed by your teacher and start the 'Do Now'</p>	<p><i>Things I Need to Remember:</i></p> <p>Getting to class on time</p> <p>Being prepared for each lesson</p> <p>Keeping my mobile, ipod, mp3 in my Yondr pouch.</p> <p>Keeping large headphones in my bag.</p> <p>Finishing my food and drink at lunch</p> <p><i>Positive Outcomes:</i></p> <p>Lessons commence quickly and peacefully</p> <p>Improved learning time</p> <p>Better learning results</p>
<p><b>2. Ending Lessons</b></p> 	<p>When asked by the teacher at the end of the lesson:</p> <p>Stand behind your chair</p> <p>Make sure your chair is pushed in and your desk is tidy</p> <p>Make sure the room is tidy and secure</p> <p>Move quietly out of the room as directed by your teacher</p>	<p><i>Things I Need to Remember:</i></p> <p>The bell is the signal to the teacher, not to me</p> <p>To value our school equipment and facilities by looking after them and by keeping them clean</p> <p><i>Positive Outcomes:</i></p> <p>Lessons conclude in a safe and orderly manner</p> <p>Rooms and property are valued</p>

Focus Area	Behaviour Standard	Outcomes
<p><b>3. Focusing on Learning in Class</b></p> 	<p>Be prepared for your lesson with correct books, pens and equipment  <i>"Packed for Learning (P4L)"</i></p> <p>Listen carefully to your teacher's instructions</p> <p>Complete all required work  <i>"In Class On Task"</i></p> <p>Do extra work if time permits</p> <p>Use any spare time productively</p>	<p><i>Things I Need to Remember:</i></p> <p>Always being prepared for every class</p> <p>Being the best learner, citizen and leader I can be</p> <p>Respecting the learning of all other students in my class</p> <p>Respecting the learning of other classes</p> <p><i>Positive Outcomes:</i></p> <p>Improved learning time</p> <p>Better learning results</p> <p>Students benefiting from working productively with others</p>
<p><b>4. Behaving with Respect and Maturity</b></p> 	<p>Speak with respect at all times</p> <p>Listen and respond politely when spoken to by teachers</p> <p>Respond politely and promptly to teacher requests</p> <p>Keep out of the business of others  <i>"Fair Go For All"</i></p> <p>Wear the school uniform with pride</p>	<p><i>Things I Need to Remember:</i></p> <p>Speaking in a way which makes me feel proud</p> <p>Acting in a way which is helpful and kind</p> <p>Respecting my school</p> <p><i>Positive Outcomes:</i></p> <p>Having positive relationships with teachers</p> <p>Having positive relationships with all other students</p>
<p><b>5. Keeping People Safe</b></p> 	<p>Stay in class every period  <i>"In For 75"</i></p> <p>Behave with respect and maturity</p> <p>Avoid involving others in your own problems</p> <p>Encourage friends to resolve problems in a mature, peaceful manner and without an audience</p> <p>Stay well away from dramas or potential fights</p> <p>Always stay in areas which are "in-bounds"</p>	<p><i>Things I Need to Remember:</i></p> <p>Being calm, happy and kind</p> <p>Keeping out of drama, fights, etc</p> <p>Be the best person I can be</p> <p><i>Positive Outcomes:</i></p> <p>Developing an ability to deal with all types of people in a positive, helpful way</p> <p>Having better problem solving skills</p> <p>Creating a school which is happy and peaceful</p>

---

## Support Network

---

### Positive Psychology Teachers

Your highly passionate and motivated Positive Psychology teacher is there as a mentor and support person to seek advice from. As a student if you feel you need someone to talk to, please visit your Positive Psychology teacher. They are also a contact person for parents to check on their child's well-being and progress. Your 2024 Psychology teachers are Ms Aneleise Piggott and Ms Amanda Smid.

### School Counsellor

Students can make appointments with the Counsellor by visiting the counsellors' office. The School Counsellors offices are located on level three of F Block (near room 33).

#### Who do School Counsellors help?

*A student who is:*

- Worried about their school work
- Feeling "down"
- Often arguing with friends or family
- Often in trouble at school
- "Troubled" or who has "problems"

*A parent/carer who is:*

- Worried about their child
- Often arguing with their child

#### How do School Counsellors help?

School Counsellors:

- Support individual students as they deal with their problems
- Assist students to learn new skills such as:
  - getting on better with friends
  - managing emotions
  - keeping out of trouble in class
- Work out why some students find it hard to learn and suggest ways to help them
- Help students and others deal with tragedies or natural disasters.

### Aboriginal Education Officer

The Aboriginal Education Officer, Karlene Rex, is located on level two of F Block opposite the PE Staffroom. Karlene works with numerous outside agencies to ensure that Aboriginal students at Plumpton High School are provided with opportunities to engage in their culture and enhance the opportunities for success at school, in tertiary education and in the workforce. These programs include, but are not limited to, WSU Pathways to Dreaming, Deadly Dreaming, AFL Indigenous Academy and Australian Indigenous Mentoring Experience (AIME). Karlene also provides in class support for targeted students and ensures that the welfare needs of the Aboriginal students enrolled at Plumpton High School are met.



## Community Liaison Officer

The Pacific Islander Community Liaison Officer provides support to Pacific Islander students, such as mentoring, accessing learning support for students, cultural awareness and enhancement and communicating with parents and the community at large. Lance can be found on the ground floor of F Block.

## Learning Support - Da Vinci Centre

At Plumpton High School we believe that:

- all students should have access to a supportive and safe learning environment
- all students' individual learning needs should be catered for
- every student can succeed

The Learning Support staff provide a safe and supportive learning environment, and are dedicated to providing students of all stages and abilities a place to grow not just as learners, but as individuals. Our "whole student" approach helps us to create personalised learning sessions that focus on building a student's intellectual development, self concept and relationships.



Support offered by the Da Vinci Centre:

### ***In Class Support***

- Students with significant additional needs are provided with in-class support with a Student Learning Support Officer (SLSO).
- During this time, SLSOs ask students guiding questions to facilitate learning and aid in reading and writing.

### ***1 on 1 Support***

- Students work with a Learning Support Teacher 1 on 1.
- Academic lessons are tailored to that specific student's needs and abilities. This can include targeted sessions on upcoming assessments.
- For a 1 on 1 session, students are able to self-refer or can be recommended to the Learning Support Team.

### ***Whole School Supports***

- Intensive Literacy Intervention programs
- Numeracy Support
- Nationally Consistent Collection of Data
- HSC Disability Provisions

## English as an Additional Language/Dialect

EAL/D (formerly known as English as a Second Language or ESL) assistance is provided to students whose first language is a dialect other than Standard Australian English and who require additional support to assist them to develop English language proficiency. The EAL/D teacher works with different key learning areas to support students in the development of their spoken and written English language skills. This involves teaching students through withdrawal sessions based around the units being taught in class, but with a greater focus on language development. It could also involve team teaching and extra assignment support. If you require extra support for English development, please see Ms Ramos in the English staffroom.



## Library Da Vinci Learning & Resource Centre

The Library is part of the Da Vinci Learning & Resource Centre. Students are encouraged to use the library as a place of quiet study, research and recreational reading. It is open in the mornings from 8:15am and at lunchtimes for quiet study, homework, research, general internet browsing (not gaming) and board games such as Chess and Scrabble. The Library is also open after school when Mrs Bailey is available. Mrs Bailey is also happy to assist with finding resources for research tasks and assignments.

Our Library is well resourced with both print and digital media, including an e-book platform, so students have a wide choice of books to borrow. Year 7 will be shown how to access all these resources when they are introduced to the Accelerated Reading program; or they can ask Mrs Bailey who is happy to get them started on their reading journey.

All Year 7 students will be participating in the Accelerated Reading Program and will be required to borrow books for reading in class and at home. Year 7 students will be issued a student card after the school photos are taken and cards received. This card has several uses: it will be used not only to borrow books, but also to use the library computers and access the printer and photocopier. It should be brought to school every day and kept in a safe place. If any Year 7's would like to become Library monitors, we are happy to have the help. Please see Mrs Bailey.

The library is the place to be to chill and learn – come and check it out!

## Special Education—Support Unit

The Support Unit formally began in 2017 when it was named by the first class as the Jackman Unit (after Hugh Jackman). In 2024, each class will be at full capacity with 7 students in each class, ranging from Year 7 to Year 12.

Students will begin in an assigned core class, however these classes are open to change as needed, as we want to create the most supportive atmosphere for each class based on abilities, need, and personalities. Students remain in these core classes with the one core teacher for English, Maths, HSIE, Science and Work Studies as well as any additional educational or behavioural programs that may be implemented to support their needs. Students begin by working towards mainstream outcomes, but they will transition to a Life Skills program of study during their first year in order to provide the required level of flexibility essential to targeted, individualised learning. They undertake these core subjects following a Project Based Learning model where all learning is related to the one topic to provide more scope for depth and detail. All learning materials (including stationery and exercise books) are provided for Jackman students to minimise potentially overwhelming additional responsibilities.



The Support Unit is staffed by a Head Teacher, three Special Education teachers, and four SLSOs who are assigned a class each and support their students in all lessons. The Support Unit demountable classrooms are located in quiet, private spaces around the school grounds in order to provide a calm learning environment. Students will spend some of their time in the mainstream area of the school when they attend their elective classes, but still remaining with their Jackman peers in the smaller supportive class group.

A variety of supports are put in place in order to help students and families transition to high school. Numerous dates will be organised during Term 4, 2023 where students and families are invited to the school. During Term 1 2024, meetings are organised with the parents/carers of each student enrolled in the unit in order to create an Individualised Education Plan (IEP). Each student's IEP is a chance to evaluate strengths and struggles and to create personalised goals. We meet again in Term 4 to evaluate the progress towards these goals, which underpin all work throughout the year. This process is repeated yearly to support our students as they grow and develop as collaboration and communication between home and school is key to student success. Both the staff and current Jackman students look forward to meeting you all soon!

## Representing Plumpton High School in Sport

Plumpton High School is one of the prominent sporting schools in the region, regarded highly for its sportsmanship and excellence. The school aims to provide an extensive and varied sporting program that reflects student needs and interests.

### Knockout Competitions and Gala Days

Plumpton High School aims to provide students with a variety of competitive sporting opportunities. As a result, we register teams in a number of sports and competitions. Some of the sports include but are not limited to: baseball, basketball, netball, rugby league, rugby union, soccer, futsal, touch football, oz tag and volleyball. All students are encouraged to try out for teams and information on when trials are being held can be found on the notice board outside the PDHPE staffroom on the second level of F Block.



### Sport Carnivals

There are three major sporting carnivals that all students are encouraged to attend.

- The Plumpton High School Swimming Carnival, held early in Term 1 at Mount Druitt Pool
- The Plumpton High School Cross Country Carnival, held at the end of Term 1 at Plumpton High school
- Plumpton High School Athletics Carnival, held Early Term 2 at Blacktown International Sports park Blacktown

Students who perform well at the school carnivals are selected to represent Plumpton High School at Zone Carnivals. Should students continue to perform well, opportunities to compete at Sydney West and State levels may exist.

For competition purposes, students are placed in one of four sporting houses. The houses are based on student surnames and are allocated a colour to wear at carnivals:

SURNAMES A-D	SURNAMES E-K	SURNAMES L-Q	SURNAMES R -Z
<b>Dangar</b>	<b>Halkirk</b>	<b>Karinga</b>	<b>Woodstock</b>
Yellow	Green	Blue	Red



---

## ***Extra Curricular Programs***

---

Students are able to apply for most of these programs.

### **Duke of Edinburgh**

The purpose of the Duke of Edinburgh program is to promote and preserve a framework of Award participation that equips, engages and empowers all young people to explore their potential. This program aims to move students beyond their comfort zone to gain a sense of real life achievement and self-confidence. The program involves the students completing activities in areas of physical recreation, community service, skill and adventure journey. All year 9 students participate in the Bronze Level Award within their PDHPE lessons, completing a scope of lessons following a curriculum. Electives classes may also participate in the program.



### **Gifted & Talented Art and Design**

The Gifted and Talented Program for Art and Design (GTPAD) aims to provide students with a deeper understanding and knowledge of Art and Design as an opportunity for self-expression and exploration of the world as a source of ideas. Students investigate the world as a source of ideas to make artworks for an audience. Through this they will learn the value of art making and art appreciation, and the importance to the artist is the intention of the work for a specific audience. The students will learn how to engage with clients for their projects and work collaboratively to contribute to the school and the wider community.



### **Gifted & Talented PEC Dance**

The Gifted and Talented Program for Dance (GTPD) aims to provide students with a deeper understanding and knowledge of dance as an artform. The GTPD will provide students with personal expression and enjoyment through dance, therefore learning about oneself, other people and the world and confirming cultural identity. Students will learn to value dance as a form of cultural expression related to cultural understanding, tradition, location, gender, social and technological issues.





## Gifted & Talented Drama

The Gifted and Talented Program for Drama (GTPDR) encourages a cooperative approach to exploring the world through enactment. The collaborative nature of this artform engages students in a creative process of sharing, developing, and expressing emotions and ideas. It is a form of action in which students take on a role as a means of exploring both familiar and unfamiliar aspects of their world. They portray aspects of human experience while exploring the ways people react and respond to different situations, issues, and ideas. The GTPDR provides students with a high-quality performing arts education, with a focus on the development of a strong understanding of dramatic styles, techniques and performance skills and aims to educate, train, and prepare students for the study of drama in years 7-12.



## Gifted & Talented Engineering Studies (STEM)



The GATES program will offer students a high-quality engineering studies program with a focus on design process, mechanisms and software that will prepare students for further study in Industrial Technology – Engineering in Stage 5 (Years 9-10), Engineering Studies in Stage 6 (Years 11-12) and in preparation to study Engineering at University with the F1 in Schools Program equivalent to 2nd year university. The GATES program is an exclusive program offered by Plumpton High School and will be taught by a qualified Department of Education engineering studies teacher.

## Gifted & Talented Experimenting with STEM

The Gifted and Talented Program for Experimenting with STEM aims to provide students with a deeper understanding of the interconnectedness of STEM disciplines and to develop student's capabilities across these areas. Students will be exposed to a range of theoretical and practical experiences with a focus on developing skills which can be applied across fields, including problem solving, creativity, critical analysis, initiative, communication skills, collaborative skills and independent thinking.





## Gifted & Talented Forensic Science (STEM)

The Gifted and Talented Forensic Science program aims to allow students to delve deeper into the career of a forensic chemist and biologist as well as explore technologies in forensics used in modern society using a STEM (Science, Technology, Engineering and Mathematics) approach. In doing so, they will acquire an understanding of scientific investigations, legal proceedings and will debunk myths portrayed in crime shows. This will allow students to perceive how a range of different forensic scientists work and how this field has developed over history as well as where it is headed for the future. They will be able to analyse the importance of the development of this field to its role in legal proceedings. Looking at the range of divisions of scientists involved in forensic science will give students an understanding of how a crime is solved in the real world in real time. The knowledge that they attain will give students an understanding of a career path in these fields.



## Gifted & Talented Music Performance

The Gifted and Talented Music Performance program exists to develop and refine student performance skills in a professional environment that caters to students of all year groups, abilities and walks of life. This program takes great care to cater lessons to each student's abilities and interests, offering relevant and engaging musical knowledge and material in a variety of styles and instruments. Students will develop their practical skills while gaining confidence and developing quality performance skills. Students will participate in a range of performance opportunities from performing in front of their peers, to working their way up to a live audience at school and community events .



## Gifted & Talented Taiko Drumming

The Gifted and Talented Taiko Drumming Program provides students with a high-quality performing arts education, with a focus on the development of a strong understanding of Taiko styles, techniques and performance skills and is an exclusive program offered by Plumpton High School with a fully qualified DEC Music Teacher .



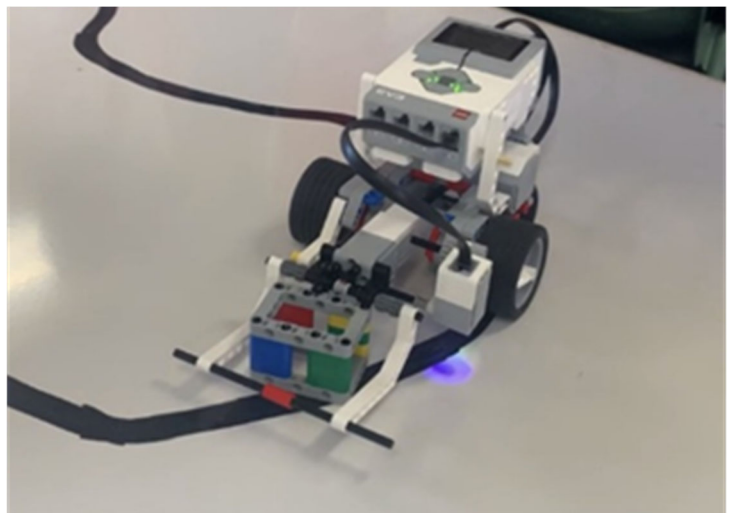
## Gifted & Talented Computer Science

The Gifted and Talented Computer Science program that is offered at Plumpton High School is internationally recognised and has been developed by the Carnegie Mellon Institute in the United States. The Computer Science course that has been developed aligns with the Australian Curriculum's general capabilities. Students will be able to build capacity to understand, reference, apply and engage themselves into 21st century learning tools. Every student should learn how to program a computer because it teaches them how to think. Through experiential and collaborative tasks, students engage in processes of analysing, designing, producing, testing, implementing and evaluating software technology-based solutions.



## Gifted & Talented Robotics (STEM)

Our Gifted and talented Robotics program aims to provide students with deep knowledge and comprehensive exposure to Mechanical, Mechatronics and Software Engineering Systems, building on their knowledge of Science and Mathematics. Better understanding of Science and Mathematics allows an individual to make better decisions, develop better judgement, logically approach problems and hence to better enjoy everything that life has to offer. Students will be developing skills in assembly of mechanical parts which will develop interests which they might not have otherwise had. Experience in building structures will also enhance their knowledge and understanding of how physical aspects of nature influence our solutions to problems. Exposure to programming and coding will not only enable development of their computer skills but also direct their intellect to deduce solutions based on logic.



## Gifted & Talented MAC Team

The Media and Communications (MAC) team is a new student led initiative at Plumpton High School. Under the guidance of our fantastic MAC teachers, students are responsible for publishing on the school website and social media platforms, as well as producing a school newspaper. They are provided with real life journalistic skills and opportunities and have access to our partners at the ABC.



---

## ***Mobile Phone & Electronic Device Policy***

---

VALUING LEARNING AND WORKING TOGETHER FOR OUR CHILDREN

Following consultation with the school community in 2020 and 2022 adjustments have been made to the Plumpton High School Mobile Phone and Electronic Device Policy.

At Plumpton High School, while the increasing use and importance of mobile phones in our lives is recognised, processes have been well established over a long period of time to assist parents and caregivers to deliver messages to their children, which are of an urgent or important nature, without the need for students to have a mobile phone.

For parents who need to contact their child during class time, a call to the office is appropriate and always welcomed. Messages are delivered to students in a prompt manner. In general, mobile phones are not necessary for communication to and from students during school hours and we ask that this is respected by all.

At times before and after school, however, mobile phones offer students and their parents many advantages in terms of ease of communication and a sense of personal safety. For this reason, the school respects the need for students to carry mobile phones, provided students observe the following conditions and courtesies.

- Mobile phones and personal electronic devices are not to be used from the commencement of Period 1 until the end of Period 4. This includes making or receiving calls, sending or receiving text messages, taking photographs or videos, recording conversations, to listen to music or any other unauthorised purpose.
  - ◊ Mobile Phones/earbuds/Electronic communication devices will be locked in Yondr Pouches prior to the bell at the commencement of Period 1 - Period 4 end.
  - ◊ Students will be responsible for locking their devices in the Yondr Pouches each morning prior to the bell at the commencement of Period 1 or before they enter the classroom if arriving after the bell.
  - ◊ At the commencement of Period 1 all students will place their locked Yondr Pouch containing their Mobile Phones/earbuds/Electronic communication devices on their desk where the teachers will inspect that they are locked with devices contained within them.
  - ◊ Larger headphones need to be stored in student bags throughout the school day.
- Appropriate use of mobile phones and electronic devices may occur during Lunch 2 for those students who require them (wellbeing needs) in Room 1.
  - ◊ 1 Yondr Pouch unlocking device will be made available for students who require use of their Mobile phones or Electronic Devices in Room 1 for wellbeing or medical reasons that will require documentation from parents and health professionals.
  - ◊ A maximum of 15 students will be able to access Room 1 at a time during Lunch 2 and students will be required to sit in chairs at their associated desks
  - ◊ A playground duty roster with teacher supervision has been established to support this process.
  - ◊ The Department's Behaviour code for students applies to this duty area as with all others.

---

## ***Mobile Phone & Electronic Device Policy***

---

- At times, teachers may instruct, or allow students to use mobile phones or electronic devices for specific educational purposes, such as recording an experiment, using music in a dance composition or using an app specific to a subject. At these times students may use their phones but only when instructed to by their teacher who will unlock the Yondr Pouches.
- Upon completion of the task teachers will instruct students to place devices back into the Yondr Pouch and lock them, followed by an inspection of the classes locked Yondr Pouches
- As with all valuable items, students are strongly discouraged from bringing mobile phones and electronic devices to school due to the potential for loss, theft or damage of the item. Plumpton High School cannot accept responsibility for the loss, theft or damage to such items, including mobile phones. These items are brought to school at your own risk.
- Should a student have a mobile phone or electronic device at school, it must be turned off during lessons and other school activities. It must be kept securely in the student's Yondr Pouch and bag during lessons or other school activities. This will ensure that there is no disruption to the school's learning environment.
- Students must not have any material stored on their mobile phones or electronic devices which is offensive, harmful or illegal. It is an offence to possess images of illegal acts, such as fights, to have inappropriate images, to bully or intimidate others through the use of mobile phones (carriage service), or to record and upload images/video of people without their consent, on these devices. In such cases the school is required to confiscate mobile phones and refer the matter to police.
- All students will receive a free Yondr Pouch that is their responsibility to manage. Should a student misplace, damage or lose the pouch they will be responsible for the replacement cost of \$20.
- Any student who brings a mobile phone or electronic device to school will be responsible for ensuring the above conditions and courtesies are observed. Incidents involving students failing to adhere to the Mobile Phone and Electronic Device Policy will result in consequences in accordance with the Plumpton High School Discipline Policy.

In summary:

- Students must:
  - ◇ Lock Phones/Electronic communication devices and ear buds/headphones in Yondr Pouches prior to the bell at the commencement of Period 1. Keep mobile phones and electronic devices in bags
  - ◇ during lessons unless directed by the teacher to use it.
  - ◇ Switch off mobile phones prior to them being placed in the Yondr Pouch
  - ◇ Report to Room 1 at Lunch 2 if they need to use their device for wellbeing or medical reasons.
  - ◇ Ensure mobile phones are used appropriately at all times
- Staff will:
  - ◇ Inspect Yondr Pouches at the commencement of Period 1 or after allowed use in class
  - ◇ Ensure the Mobile Phone and Electronic Device Policy is followed during the school day and at all school events
  - ◇ Follow the school's discipline code should students choose not to adhere to the Mobile Phone and Electronic Device Policy



## ***Yondr Pouch Implementation***

### ***Frequently Asked Questions—Students***

What if I forget to bring my Yondr pouch to school?	You should report to DP office. Phone will be stored securely. The phone can be collected after the end of Period 4.
What if I don't want to put my phone into my Yondr pouch?	You will be given the opportunity to make a good choice and follow the policy. However, if you still refuse, your phone will be confiscated and given to the DP to be stored securely until the end of the day. It can be collected from the DP after 2.45pm.
Do earphones/airpods/ear buds need to be locked into a Yondr pouch?	Yes and large headphones should be placed in bags.
What if I don't possess a mobile phone or have not brought it to school that day?	The expectation is that you bring your Yondr pouch to school every day regardless of whether you have a mobile device with you or not. You must present the pouch at the beginning of period 0/1 and inform the teacher it is not at school today.
What if I damage or lose my Yondr pouch?	The pouch remains the property of the school. You will be referred to a DP and charged \$20 (cash or added to school fees) for a new pouch. If deliberately damaged you may face disciplinary actions.
Can I use my phone at school prior to 8.40am or after 2.45pm?	You are allowed to use your phone at these times, unless you are in a Period 0 or after school activity. If you are seen using your phone at any time during the school day it will be confiscated and securely stored by a DP. Disciplinary action may result from repeated offences of this type.
What if I need to contact my parent/carer during the school day?	You should go to the Front Office or DP. If you needs to contact a parent/carer urgently, you may use the school phone.
What if my parent/carer needs to contact me in the event of an emergency?	Your parents/carers can contact the school if there is an emergency. Staff will contact you to relay the message.
What if I have a medical condition that requires me use my phone to record or monitor medical information?	If you have a medical condition that require use of a mobile phone, you will be given a special pouch as negotiated between the Principal/DP and your parent/carer
What if I have a mental health condition and I need to contact a case worker, counsellor, parent or carer?	A mobile unlocking station will be kept in the Sick Bay and Front Office. Teachers/admin staff will assist you to unlock your pouch and access the phone to make the call. The teacher/admin staff will support you to lock the pouch after use.

## ***Yondr Pouch Implementation Frequently Asked Questions—Students***

What if I need access to urgent personal hygiene items?	You should visit Sick Bay, your PP Teacher, Head Teacher Wellbeing or DP for assistance.
What if I forget to unlock the Yondr pouch before going home?	An unlocking station will be available near the front entry to the school for after-hours access.
What if I cannot unlock my Yondr pouch when I leave the school?	You should report to the Front Office for assistance.
How many locking stations will be provided around the school?	10-12 stations will be located close to entry and exit points. Pathway to the front gate and front gate Old PAC Bus Bay Mobile stations will be located in the Front Office and Library. <i>No stations are available at the staff car park entrances.</i>
What if I am a senior student who has no more classes for the day, and I need to leave school early?	Early leavers will need to unlock their phone at the office. Year 11 & 12 on Mondays and alternative Fridays will be able to access two unlocking boxes at the front of the school.
What if I have an early leavers pass?	You will go to Front Office to unlock your pouch prior to leaving the school.
What if I need my phone in case my part time work needs to contact me?	In the first instance, you should remind your employer that you will not have access to your phone during school hours. However, should this be an issue, you can report to the office and arrangements will be made to assist.
What if the school goes into lockdown or lock-out?	Students will follow existing school procedures. If parents/carers need to be contacted, usual processes will be followed in line with school policy. Please make sure your contact details are up to date.
I use my phone to purchase food from the canteen or buy uniform items.	You will need to bring your debit card or cash to make payments.

If you have any further questions please speak to your DP or Principal.

---

## **General Information**

---

### **Attendance**

Regular attendance is essential as it enables students to maximise their learning potential. Continued absences affect a student's progress as they miss the valuable information provided in lessons that enable students to meet the requirements of their subjects and more importantly – **LEARN**. Students should aim to attend school every day.

### **Absences**

Any absence of half a day or more requires a note from parents or guardians. The note should be handed in to the front office **within two days of their return to school**, or the absence can be explained on the Sentral App or if you receive a text, you can reply to it. It is essential that notes explaining absences are received promptly as school rolls are legal documents and are required to be accurate and up to date. Your name (printed), year, the day(s) absent and the reason should be stated on the note. Notes are best set out like this:

Student Name: _____	Year: _____	Date: _____
Date(s) and day(s) of absence: _____		
Reason: _____		
Parents/Guardians signatures: _____		
Print name below signatures: _____		

**NOTE:** If the parents'/guardians surname is different to child's, please print FULL NAME OF STUDENT.

### **Late Arrival or Early Leaving from School**

If you are running late to school you are to go to the front office and be signed into school. When you have received your late slip, you should go straight to your timetabled room and give the late slip to your teacher.

If a student needs to leave school early, a note is required. The student should:

1. Take the note to the front office BEFORE Period 1 where an early leavers note will be issued.
2. Give the early leavers note to the Teacher prior to leaving.

### **Permission to Leave the School Grounds**

Students are not allowed to leave the school grounds before the final bell without the permission of the Principal or Deputy. The school has a duty of care towards all students. We cannot guarantee your safety if the above procedures are not followed.

## Students Sick at School

When students become sick at school, they should report to their class teacher for a note, or in the case of lunch times, report to the teacher on playground duty. First Aid assistance is available in the Sick Bay, next to room 2 in the bottom of A Block (Science and HSIE). **Students are not to call parents directly. All students that are sick must go through the sick bay and staff will then contact the parent/carer.**

Where necessary, depending upon the situation, the school will either:

1. Contact parents/guardians and or/emergency contacts listed (a contact phone number must be provided by all parents/guardians whether at home, work or even a neighbour's phone number).
2. In emergencies, arrange for an ambulance to take the student to hospital.

## Medications

No student is to carry any medication (except asthma sprays or epipens). If medication is required please see the Head Teacher Wellbeing, Mr David Streatfeild or the First Aid Officer in the First Aid Room who will give you the relevant forms to complete an individual health care plan.

## Uniform Information

Enrolment and continuation at Plumpton High School (PHS) is in part conditional on the preparedness to abide by the school policies including those relating to school uniform requirements.

### Year 7 to Year 9 uniform

Girls: White PHS crested polo, tartan skirt, tartan skort or black long pants or black trackpants with red stripe, tartan dress, red PHS crested jumper or jacket, and black leather shoes.

Boys: White PHS crested polo and black shorts or pants or black trackpants with red stripe, red PHS crested jumper or jacket, and black leather shoes.

### Year 10 to Year 12 uniform

Girls: White PHS crested senior blouse and tartan skirt, tartan shorts/skort or black long pants, tartan dress, red PHS crested jumper or jacket, and black leather shoes.

Boys: White PHS crested senior shirt, black shorts or pants, red PHS crested jumper or jacket, and black leather shoes.

Note: Tie is optional and blazer is for prefects or other school events and will be given out when needed.

Sports uniforms must not be worn to school. Students are to bring this in their bags and change into it when they have PDHPE or sport.

Uniform detentions may occur for students out of uniform. If a student is out of uniform for a short period they need to see the office with a note or phone call from home and get a green uniform note.

**All black pants must be plain black with no branding.**

**Non-uniform items include: Grey pants, tights, short shorts, denim, and any other jumpers and must not be worn.**

For inquiries please do not hesitate to contact our Wellbeing Head Teacher, Mr David Streatfeild on 9625 7020 or email him at [David.streatfeild2@det.nsw.edu.au](mailto:David.streatfeild2@det.nsw.edu.au).



NEW  
NEW  
NEW  
NEW



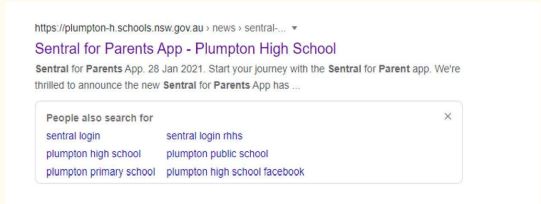
# HOW CAN I SUPPORT MY CHILD AT PHS?



## CHECK IN AT THE PORTAL

Each day check in on students **Attendance**– a real-time reflection of your child/ren's attendance at school. Helping you to support your child to stay above 85% attendance.

**REGISTER FOR THE SENTRAL PORTAL**  
GOOGLE PLUMPTON HIGH SCHOOL SENTRAL PORTAL FOR MORE INFORMATION



OR

DOWNLOAD THE APP TO YOUR PHONE OR IPAD FROM THE App Store OR Google Play AND CONTACT THE SCHOOL FOR THE FAMILY ACCESS CODE



*What some Parents have said after using the app:*  
"I love the app"  
"Great way to communicate"  
"Easy to use and quick"

The portal is accessible by staff, students, and parents to communicate with the school. Students can logon using their det- user.name and password

**EVERY DAY COUNTS...**  
A day here or there doesn't seem like much, but...

When your child misses just...	that equals...	which is...	and therefore, from Kindy to Year 12, that is...	This means that the best your child can achieve is...
1 day each fortnight	20 days per year	4 weeks per year	Nearly 1 ½ years of school	Equal to finishing Year 11
1 day a week	40 days per year	8 weeks per year	Over 2 ½ years of school	Equal to finishing Year 10
2 days a week	80 days per year	16 weeks per year	Over 5 years of learning	Equal to finishing Year 7
3 days a week	120 days per year	24 weeks per year	Nearly 8 years of learning	Equal to finishing Year 4

Give your child every chance to succeed... **Every day counts!**

### WHAT ELSE CAN I DO ON THE PARENT PORTAL?

- Message your child's teachers
- Check your child's timetable
- Receive announcements and reminders about school events
- See assessment schedules and calendars
- View child's goals, journal, and other information about their learning
- Access parent-teacher night bookings
- More to come in the future- including online notes

note: the sentral portal replaces skoolbag

---

## ***Frequently Asked Questions***

---

<b>How can I contact the school?</b>	Plumpton High School 141 Hyatts Rd Plumpton Ph: 02 9625 7020 Email: <a href="mailto:plumpton-h.school@det.nsw.edu.au">plumpton-h.school@det.nsw.edu.au</a>
<b>What do I do if I'm late?</b>	Go straight to the front office and present to staff for a late note and then proceed to class and hand the note to the teacher. If you have a note or medical certificate please hand it in to the front office.
<b>What happens when I have been absent from school?</b>	If you are recorded as absent, an SMS is sent to your parent's mobile to inform them of your absence (which parents can reply to with an explanation). If parents are aware of their child's absence they can call the Front Office in the morning to notify staff of the absence.
<b>What happens when I return from being absent from school?</b>	You must bring a note from your parent or guardian on the day of your return. If you are going to be absent for a reasonable period of time your parent would need to speak to your Positive Psychology Teacher for them to organise class work to be sent home and complete the appropriate paperwork available in the Front Office.
<b>What should I do if I become sick or injured during the school day?</b>	If you are sick or injured during lunch you must report to a teacher on playground duty. They will then advise you as to what action is to be taken. If you are sick during class, you must inform your teacher. The teacher must give you an 'out of class' permission note and will direct you to the Sick Bay. The First Aid member of staff will assist you. If your problem is of concern, your parents or guardians will be contacted immediately and appropriate action taken.
<b>Who do I tell if I need to take medication?</b>	If you require medication your parent will need to supply the medication and written dosage requirements to the Front Office. The medication will be administered by a registered medication officer. Students are not to have medication with them whilst at school. A meeting will need to be arranged to create a Student Health Care Plan.
<b>Can I bring spray deodorant to school?</b>	Spray deodorants are not allowed at school. Many people have serious allergies to these spray deodorants.
<b>What do I do if I need to go to the toilet during class time?</b>	If you have the need to go to the toilet during class time you must get a note from your teacher to be out of class.

---

## ***Frequently Asked Questions***

---

<b>Where do I go to pay for excursions?</b>	The office is open for student payments every morning from 8:00am up until 8.40am and lunch 1 and 2. Parents/ Guardians are welcome anytime between 8:00am- 1.30pm. Online payments are also available via the school website.
<b>Where can I get my travel pass?</b>	For all enquiries in relation to transport you can go to <a href="https://www.opal.com.au/en/about-opal/opal-for-school-students/">https://www.opal.com.au/en/about-opal/opal-for-school-students/</a> or contact Opal.
<b>Where do I go to get a new timetable?</b>	You are to go to the Front Office to have one reprinted. Lost timetables cost 20 cents.
<b>How often is a Newsletter produced?</b>	Here at Plumpton High School we embrace technology completely. The newsletter is produced once a term and delivered electronically to all staff and students via their department email. It is also sent to all families for whom we have email contact details. If your parent's email address changes, please let the office staff know as soon as possible. A paper copy of the newsletter is available from the front office. The newsletter will also be posted to our website.
<b>Where will I find lost property?</b>	All articles of lost property are held at the Front Office until the end of term when they will be disposed of. If you have lost anything while at school, please go to the front office and ask one of the office staff to check lost property. Remember to ensure that you have your name on ALL of your belongings so they can be returned to you.
<b>Visiting the school grounds</b>	All parents and visitors to Plumpton High School must go to the front office.