



PLUMPTON HIGH SCHOOL

Artwork By Student:
Elaine Garces (Year 10)



ASSESSMENT SCHEDULES

2025

YEAR

12



CRICOS Provider Name: NSW Department of Education
CRICOS Provider Number: 00588M

TABLE OF CONTENTS

NSW EDUCATION STANDARDS AUTHORITY (NESA) REQUIREMENTS	5
<i>Pattern of Study</i>	5
SCHOOL-BASED ASSESSMENT: NESA'S POLICY AND PROCEDURES	6
<i>What is the assessment for?</i>	6
<i>Final assessment rank</i>	6
<i>Appeal against final assessment rank</i>	6
<i>Satisfactory completion of a course</i>	6
<i>N Determinations</i>	7
<i>Malpractice</i>	7
N AWARD WARNING FLOW CHART	9
STUDENTS REQUIRING ADDITIONAL SUPPORT	10
<i>Disability Provisions</i>	10
<i>Life Skills</i>	10
<i>Life Skills Assessment</i>	11
ASSESSMENT TASKS	12
<i>Task Submission</i>	12
<i>Late Submission of an Assessment Task</i>	12
<i>Issues regarding the marking of work</i>	12
EXAMINATION PROCEDURES	13
APPLICATION FOR SPECIAL CONSIDERATION - STAGE 6 (YEARS 11 AND 12)	14
ASSESSMENT TASK COVER SHEET	16
STUDENT SUPPORT AT PLUMPTON HIGH SCHOOL	17
<i>The Senior Study</i>	17
<i>The Library</i>	17
<i>Positive Psychology Team</i>	17
<i>Classroom Teachers and Head Teachers</i>	18
<i>The Futures Centre</i>	18
<i>Principal and Deputy Principal</i>	18
<i>Counsellors and School Psychologist</i>	18
RIGHTS AND RESPONSIBILITIES	19
GLOSSARY OF KEY WORDS	20
PLUMPTON HIGH SCHOOL – ASSESSMENT TASK/EXAM SCENARIOS	21
ABORIGINAL STUDIES	24
AGRICULTURE	25
ANCIENT HISTORY	26
BIOLOGY	27
BUSINESS STUDIES	28
CHEMISTRY	29
COMMUNITY & FAMILY STUDIES (CAFS)	30
DANCE	31
DRAMA	32
EARTH AND ENVIROMENTAL SCIENCE	33
ENGINEERING STUDIES	34
ENGLISH ADVANCED	35
ENGLISH EXTENSION 1	36
ENGLISH EXTENSION 2	37
ENGLISH STANDARD	38
ENGLISH STUDIES	39
EXPLORING EARLY CHILDHOOD	40

INDUSTRIAL TECHNOLOGY AUTOMOTIVE.....	41
INDUSTRIAL TECHNOLOGY GRAPHICS.....	42
INDUSTRIAL TECHNOLOGY TIMBER - PRODUCTS AND FURNISHINGS.....	43
INVESTIGATING SCIENCE.....	44
LEGAL STUDIES	45
MATHEMATICS ADVANCED	46
MATHEMATICS EXTENSION 1.....	47
MATHEMATICS EXTENSION 2.....	48
MATHEMATICS STANDARD 2.....	49
MATHEMATICS STANDARD 1.....	50
MODERN HISTORY	51
MUSIC 1.....	52
NUMERACY.....	53
PERSONAL DEVELOPMENT, HEALTH & PHYSICAL EDUCATION (PDHPE)	54
PHYSICS	55
SOCIETY & CULTURE	56
SOFTWARE ENGINEERING.....	57
SPORT, LIFESTYLE AND RECREATION STUDIES (SLR).....	58
VISUAL ARTS.....	59
VISUAL DESIGN	60
WORK STUDIES.....	61
CONSTRUCTION PATHWAYS	62
ENTERTAINMENT INDUSTRY	63
HOSPITALITY.....	64
INFORMATION AND DIGITAL TECHNOLOGY.....	65
PRIMARY INDUSTRIES.....	66
RETAIL SERVICES.....	68
HSC ASSESSMENT TIMELINE TERM 4 2024	69
HSC ASSESSMENT TIMELINE TERM 1 2025	70
HSC ASSESSMENT TIMELINE TERM 2 2025	71
HSC ASSESSMENT TIMELINE TERM 3 2025	72

Welcome to Year 12

2024/2025 Higher School Certificate Course

This assessment handbook for the HSC Course is provided to:

- assist students in understanding the place of assessment in their HSC Course credential.
- explain the processes by which assessment marks are determined and the process for requesting a review, if necessary
- assist students in planning and organising their time, by informing them of when assessment tasks are due

It is **our** responsibility to provide you with these guidelines and explain them to you.

It is **your** responsibility to read and ensure that you understand them.

Mr Tim Lloyd
Principal

NSW Education Standards Authority (NESA) Requirements

Full details may be obtained from the NESA website: <http://educationstandards.nsw.edu.au>

This site will also allow you to access full copies of each syllabus, assessment requirements, lists of prescribed texts, specifications for each course, as well as publications including past examination papers, specimen papers and *Notes from the Marking Centre*.

In order for you to qualify for the HSC course, the principal must certify to NESA that you have:

1. satisfactorily completed a pattern of courses which meets NESA's requirements.
2. completed the requirements for each course, including any set practical, projects or work placement.
3. completed tasks designed by the school for the internal assessment program in each HSC course.
4. sat for, and made a genuine attempt at, the required HSC Certificate examination.

Pattern of Study

The Preliminary course must be successfully completed before a student can commence the HSC course.

The HSC course runs throughout Term 4, 2024 and Terms 1, 2 and 3, 2025, and must include 10 units of study composed of:

- at least 6 units of NESA developed courses (i.e., courses with an external HSC examination)
- at least 2 units of a NESA developed course in English, or English Studies
- at least 3 courses of a 2-unit value or greater (either NESA developed, or NESA endorsed courses)
- at least 4 subjects (including English)

School-Based Assessment: NESAs Policy and Procedures

What is the assessment for?

The award of the HSC Certificate involves a combination of internal examinations, and other school-based assessment in all subject areas. Your Record of School Achievement (RoSA) from NESAs will state that you have satisfactorily completed the HSC Course. VET and Life Skills courses have different requirements.

School-based assessment tasks follow NESAs policy and procedures and are designed to measure performance in a wider range of outcomes than may be tested in an examination. Assessment tasks may include tests, written or oral assignments, practical activities, fieldwork and projects. VET courses are assessed on your competency in performing work-related tasks. This assessment counts towards your VET qualification, but not towards your HSC course mark.

The assessment requirements for each NESAs developed course are set out in each syllabus and can be found on the NESAs website.

Final assessment rank

At the end of the HSC examinations, you can obtain your rank order in each course you have studied based on the school assessment program.

Appeal against final assessment rank

If you feel that your rank in any course is not correct, you may apply to the school principal for a review. The review can only address any clerical or process errors which may have led to your assessment being incorrectly entered. A request for review cannot be based on questioning the professional judgment of the teachers in marking your work.

Satisfactory completion of a course

A student will be considered to have satisfactorily completed a course if, in the principal's view, there is sufficient evidence that the student has:

- a) **followed** the course developed or endorsed by NESAs; and
- b) **applied** themselves with diligence and sustained effort to the set tasks and experiences provided in the course by the school; and
- c) **achieved** some or all of the course outcomes.

For the satisfactory completion of a course, NESAs does not mandate an attendance requirement. As a guide, however, student attendance falling below 85% of a school's programmed lesson time for a course, the principal may determine that, as a result of absence, the above course completion criteria may not be met. Clearly, the principal will regard absences seriously.

If at any time it appears that a student is at risk of receiving an 'N' determination - a non-successful completion of a course - the principal must warn the student as soon as possible and advise the parent or guardian in writing. This warning should be ISSUED in time for the problem to be corrected.

Periodically, each student's progress will be monitored by their positive psychology teacher, class teacher, subject head teachers, head teacher administration, head teacher teaching and learning, senior study teachers and the deputy principal. Students who are in danger of receiving an N-determination will be interviewed to create an improvement plan, if possible, and have information sent home informing parents/guardians of their child's status.

Students who have not complied with the above requirements and have received at least two (2) written warnings may be regarded as not having satisfactorily completed the course. The principal will then issue the N- determination.

N Determinations

Students are responsible in all courses for regular attendance, completion of all coursework and completion of assessment tasks. A student who fails to fulfill his/her responsibilities in attendance, coursework or assessment will face the following consequences:

- The student's parents will be contacted, and the student will receive a formal N-determination warning from the class teacher.
- If a student fails to fulfill his/her responsibilities a number of times, the student will receive further N-determination warnings and will be interviewed by the deputy principal or the head teacher, teaching and learning and an improvement plan will be created. Parents will be provided with a copy of this plan.
- There will be a second interview to assess if the student has successfully met the improvement plan requirements. If the student has not improved accordingly parents will be involved in the interview at this point. This will be the final opportunity for the student to correct the situation.

If the situation is not corrected following an interview with the deputy principal, the student will be issued with a N-determination by the principal. This means that the course will not count towards the completion of their HSC School Certificate.

The purpose of all interviews will be to provide support and encouragement in helping students to meet their responsibilities. A plan will be determined to help students correct the situation. Please note, that while you will be required to submit any missing assessment tasks, those tasks will not be included in your assessment mark.

Ultimately, it is the student's responsibility to ensure all requirements are being met for all courses. Please make every effort to ensure you achieve a successful record of study.

Malpractice

Cheating of any kind is unacceptable. Behaving dishonestly to gain unfair advantage in assessments or exams is malpractice or cheating. Any form of malpractice, including plagiarism, is unacceptable. We treat these allegations very seriously. Detected malpractice may result in losing marks for a section of a task or receiving zero for the whole task.

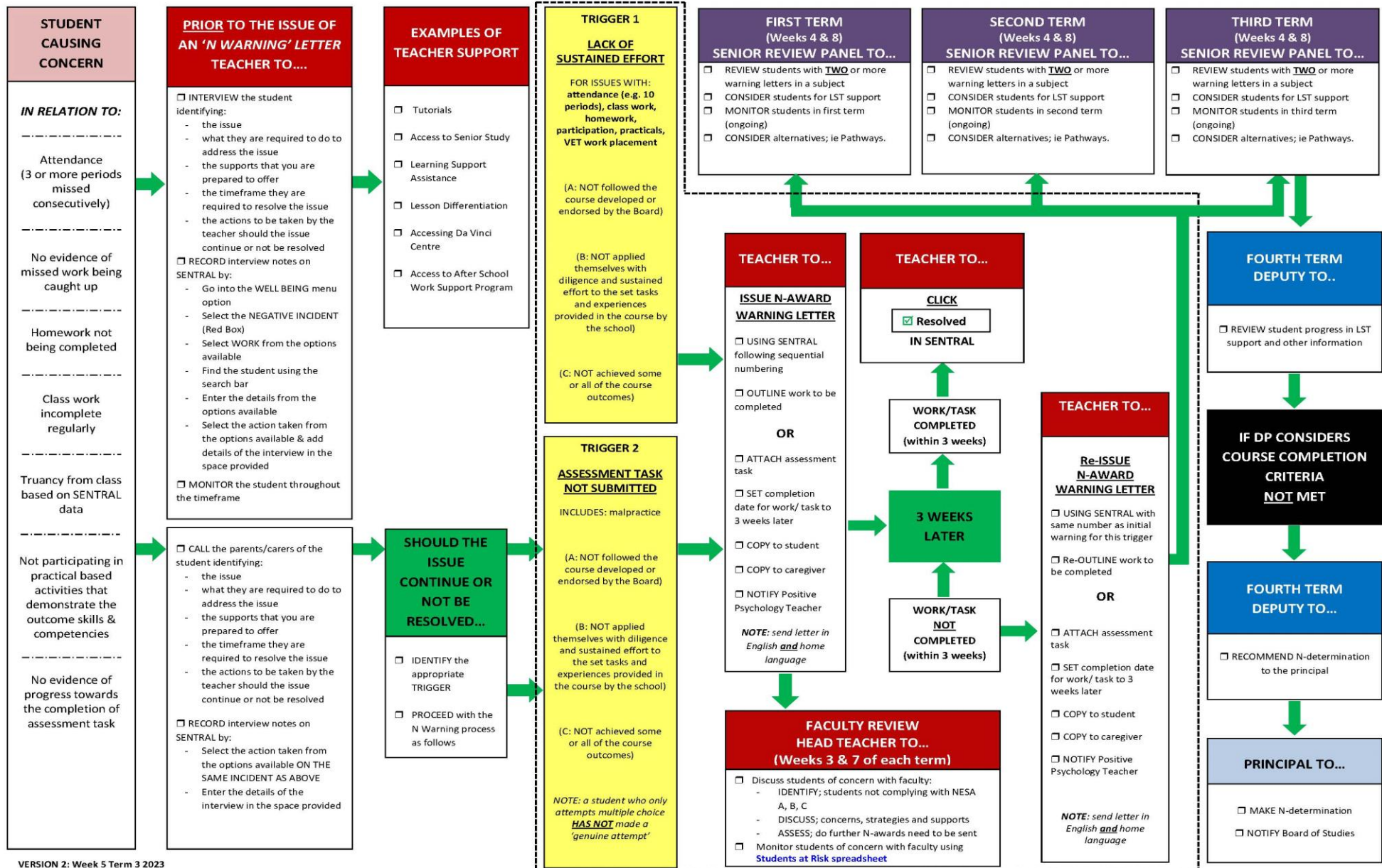
Malpractice includes:

- copying part or all of someone else's work and presenting it as your own
- using material directly from books, journals, CDs or the internet without giving its source
- building on someone else's ideas without giving their source
- buying, stealing or borrowing someone else's work and presenting it as your own
- submitting work that someone else, for example a parent, tutor or subject expert, substantially contributed to
- using someone else's words, ideas, designs or work in projects and performance tasks without giving their source
- paying someone to write or prepare material and presenting it as your own.
- not acknowledging any work completed by others for your submitted work or performance.
- breaching school exam rules
- cheating in an HSC exam
- using non-approved aids in an assessment task
- giving false reasons for not handing in work by the due date
- helping another student to engage in malpractice.
- being responsible for actions done or omitted to be done that confer an unfair advantage in relation to the outcome of any HSC exam – or irrespective of whether such actions occur before, during or after such an exam or assessment.

If you are suspected of malpractice, you will need to show that all unacknowledged work is entirely your own. You might need to:

- prove and explain your work process with diaries, journals, notes, working plans, sketches or progressive drafts that show how your ideas developed.
- answer questions about the assessment task, exam or submitted work being investigated to show your knowledge, understanding and skills.

N Award Warning Flow Chart



VERSION 2: Week 5 Term 3 2023

Students Requiring Additional Support

Disability Provisions

Any HSC student with a disability recognised in the Commonwealth Disability Standards for Education 2005 can apply for disability provisions. Disability provisions apply only where the disability needs a practical arrangement to reduce disadvantage in an exam situation. Disability provisions also apply to temporary and emergency-related disabilities such as where a student breaks their writing arm a week before an examination. Students who become ill during an examination period may be eligible to make an illness/misadventure application rather than a disability provisions application.

To apply for provisions, schools must submit an online application, with evidence, to NESA. At Plumpton, these provisions are applied for and coordinated by the staff in the da Vinci Centre. Most eligible students have already had support prior to Year 12 and will be consulted during Term 4, when the application will be prepared for submission to NESA during Term 1 of the HSC year.

Schools are responsible for determining and approving disability provisions for all school-based assessment tasks. We make that judgement based on the likelihood of a successful NESA application so that eligible students receive provisions for school-based tasks throughout Year 12. Please see your deputy principal if you want further information.

Life Skills

Life Skills courses have been developed by NESA to extend the stage 6 curriculum to meet the special educational needs of students. This is in recognition of the principle that the post-compulsory years of schooling should cater for all students who choose to participate.

To meet this commitment, NESA has developed Life Skills courses for Stage 6 in each broad area of learning. These courses have NESA developed status and can be used along with other NESA developed courses to meet requirements for the award of the Higher School Certificate.

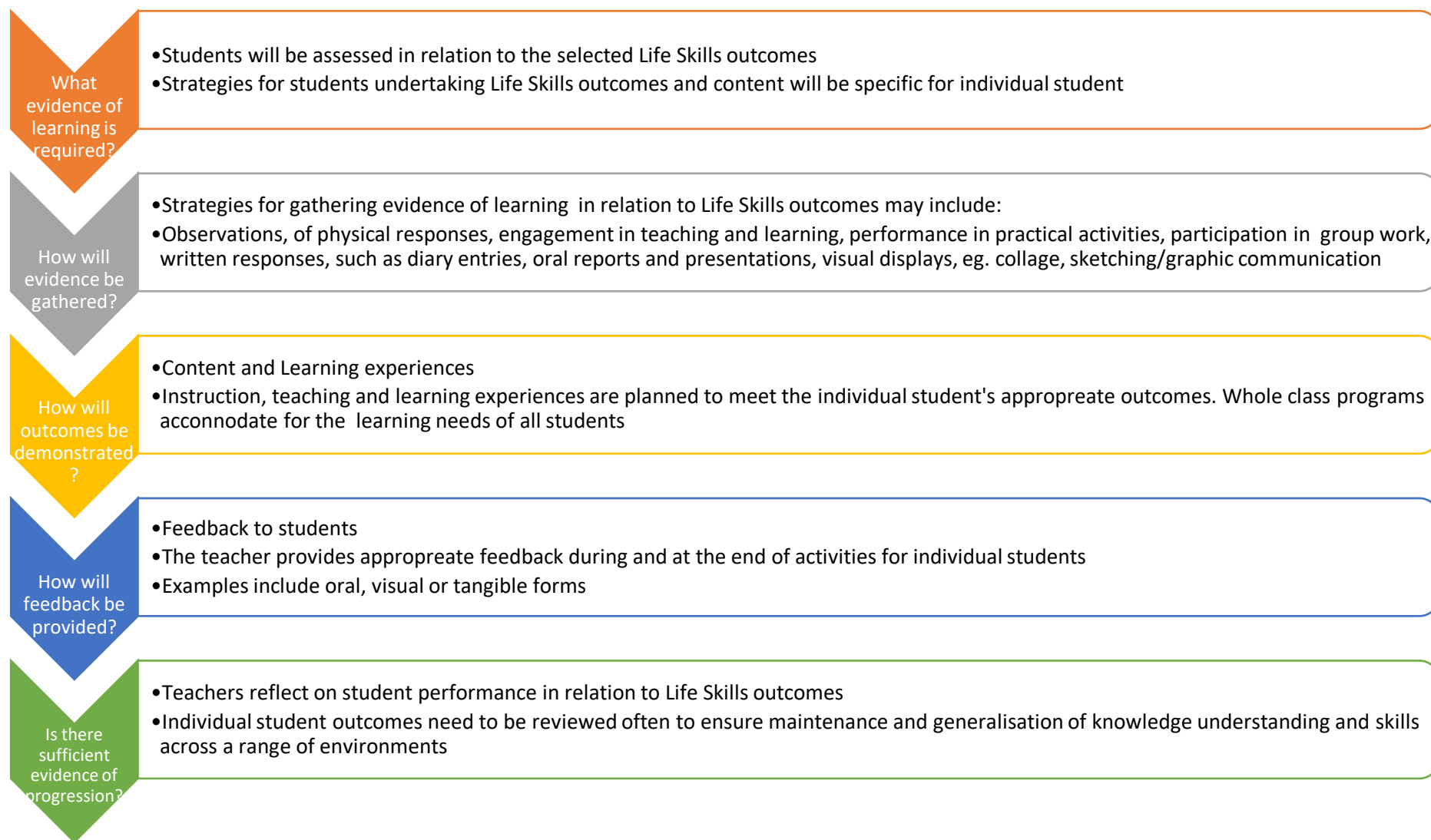
Each Life Skills course comprises 2-Unit Preliminary and HSC courses. There is no external examination for Life Skills courses.

An individual learning plan will be developed collaboratively with the student, teacher, and a representative from the da Vinci Centre to select the outcomes, content and appropriate assessment of the course that will be covered, specific to that students' learning needs.

Students studying a Life Skills pattern of study are also subject to N Award warnings and determinations

Life Skills Assessment

Each student undertaking a Life Skills course will study selected outcomes and content.



Assessment Tasks

Task Submission

All tasks handed in must have an assessment cover sheet. No task will be accepted or deemed to have been handed in unless the cover sheet is completed with all relevant signatures.

All tasks are to be handed in at a common time. Tasks can be handed in before that time. The set time is at the **beginning of the period in which the subject occurs**. However, when the same task is set for classes on different lines the head teacher of that subject will establish a common set time.

If you are absent and cannot personally deliver a task to school, then arrangements must be made to ensure it arrives **before the period on the due date**.

On the day of a task, it is expected that **all students are present for their normal timetable**, in line with school policy. If a student is not present to hand in or complete an assessment task then a completed Application for Special Consideration for Accident/Illness/Misadventure/Special Circumstances form with a medical certificate, or other appropriate documentation, will be required.

You will be required to **retain the Record of Submission** from the Assessment Task Cover Sheet to acknowledge when you have submitted the assessment task for marking.

Late Submission of an Assessment Task

The precise due date for an assessment task will be provided by your classroom teacher, at least **TWO WEEKS before it is due**.

If your assessment task is not submitted on the due date, **you will receive a ZERO mark**.

- If you receive a ZERO, you may lodge an Application for Special Consideration for Accident/Illness/Misadventure/Special Circumstances form to the head teacher for the Deputy Principal
- An extension of time for the submission of an assessment task will only be granted in exceptional circumstances and only after the deputy principal has reviewed the student's Application for Special Consideration for Accident/Illness/Misadventure/Special Circumstances

If you fail to submit assessment tasks amounting to a significant percentage of your total assessment mark for the course, the Principal will deem you to have **NOT FULFILLED THE REQUIREMENTS OF THE COURSE** and you will not be eligible to receive the award of a HSC Certificate.

Issues regarding the marking of work

Any complaint relating to the marking of a task can only be considered at the time the task results are ISSUED.

The process to follow is:

- discuss first with the teacher - request an explanation of how the mark was arrived at
- if not satisfied, discuss with the head teacher.
- if still not satisfied, see the deputy principal.
- if still not satisfied, see the principal.

Examination Procedures

The HSC year at Plumpton High School has one separate examination period during term 2, known as the HSC Trial Examinations. These exams are intended to give students an experience as close as possible to the HSC examinations in October. The Trial examination timetable will be distributed two weeks before the examination period.

During the examination period students are expected to adhere to the following rules and conditions:

- Attendance is compulsory.
- Make sure that you are ready to enter the examination room no later than 10 minutes before the examination is due to start.
- Once you are told, move into the room quietly. You are not allowed to speak whilst moving to your seat.
- Full school uniform must be worn. Hats or hoodies must not be worn inside the examination room.
- During the examination time all students must remain silent.
- Eating and drinking in the examination room is banned. Water in a clear container is allowed.
- Any misbehaviour, such as turning around or distracting others, may result in your dismissal from the examination room and the cancellation of your exam paper.
- Make sure that you have been to the toilet beforehand. If you need to go to the toilet, raise your hand.
- If you have a question about the paper, raise your hand and wait for a supervisor to see you.
- No student will be allowed to leave the examination room during the examination time.
- Read all instructions carefully.
- Mobile phones are not allowed during exams and must be turned off and handed to the teacher on duty or remain in bags away from the exam area.
- All calculators to be used during examinations must be NESAs approved. If unsure check with the Mathematics Department.
- Make sure that you sign on and off for every examination.
- If you are absent for an examination, you must contact the school as soon as practical so that an alternative time within the examination period can be arranged. On your first day of return to school you will need to provide the deputy principal with a completed Application for Special Consideration for Accident/Illness/ Misadventure/Special Circumstances and provide supporting documentation (usually a medical certificate).

Application for Special Consideration - Stage 6 (Years 11 and 12)

Accident/Illness/Misadventure/Special Circumstances

This process ensures that students are treated fairly and equitably across the school. It is vital that any student who does not hand in or sit a task at the appointed time uses this process. Students cannot negotiate ANY changes, no matter how small, in timing of the handing in or sitting of a task with their teacher or head teacher, no matter what the circumstances.

You may lodge an **Application for Special Consideration for Accident/ Illness/ Misadventure/ Special Circumstances** if you believe that circumstances occurring immediately prior to or during an assessment task or exam, and which were beyond your control, affected your performance. The right to submit and the responsibility for doing so rests with you, except where it is impossible for you to do so, such as in cases of severe illness.

Students should complete/hand in the task/exam as soon as possible and follow it up with an Application for Special Consideration to avoid a zero mark.

All **Applications for Special Consideration** relating to assessment tasks are to be lodged to the relevant head teacher within 48 hours of the due date of the task. Students lodging an appeal should carefully fill out the form. Teachers are available to provide support to students lodging an appeal. Completed forms are to be handed to the head teacher of the faculty concerned.

Applications for Special Consideration *may be in respect of:*

- Illness or accident – i.e. illness or physical injuries suffered directly by you which affected your performance in the assessment task (e.g. influenza, an asthma attack, cut hand).
- Misadventure – i.e. any other event beyond your control which affected your performance in the assessment task (e.g. death of a family member, car accident, witness to an accident).
- Regional or State representation at a sporting or cultural event.

Applications for Special Consideration *process does not cover:*

- Matters relating to long-term loss of preparation time, alleged inadequacies of teaching, loss of study time or facilities, computer technology failure.
- Matters that could have been avoided by the student (e.g. misreading of timetable).
- Long-term illness such as glandular fever, asthma and epilepsy.

In all cases the school requires evidence that clearly identifies the disadvantage you experienced for the task.

Your application must include:

- A statement explaining how you were affected during the assessment task
- A medical certificate with details of the illness, together with a statement about how your performance in the assessment task may have been affected. In cases of misadventure, evidence from other sources (e.g. police statements and/or other statements explaining how your performance in the assessment task may have been affected) should be provided
- A statement from your teacher. This should contain reference to your preparation for the assessment task and any other information deemed relevant to the genuineness of the appeal

The head teacher will first consider applications for Special Consideration by making a recommendation and submitting the form to the deputy principal. The final decision on an appeal will be made by the deputy principal in consultation with the principal and communicated to you by the headteacher.

If the appeal is upheld, you will receive either the mark you actually gained on the task, or an estimated mark, on the judgement of the teacher and head teacher or arrangements will be made for you to re-sit or resubmit the assessment. Since students often perform better under stressful conditions than they expect, **it is important to complete the task if possible rather than rely on predictions or estimates.**

If an **exam** is missed the student must follow the same procedure as outlined above.

PLUMPTON HIGH SCHOOL

Application for Special Consideration

Stage
6

Accident / Misadventure / Illness / Special Circumstances Stage 6 (Years 11 and 12)



Students should always complete/hand in the task/exam as soon as possible and follow it up with an Application for Special Consideration to avoid a zero mark.

Student Name: _____ Class: _____

Subject / Course: _____ Teacher _____

Task/ Exam _____ Due Date: _____ Date of submission: _____

Student Statement: (to be completed by the student)

My appeal is being lodged for the following reason/s {please tick all those that apply ✓:

- | | |
|---|--|
| <input type="checkbox"/> Illness / misadventure | <input type="checkbox"/> Final course rank |
| <input type="checkbox"/> The awarding of zero / N warning | <input type="checkbox"/> Acceptable reason for late submission |
| <input type="checkbox"/> Final assessment mark | <input type="checkbox"/> Acceptable reason for non-submission |

I did not complete/submit the task/exam on the due date for the following reasons and effect on task was:

Attach supporting documentation (e.g. medical certificate) to this sheet and return it to the faculty head teacher.

Student Signature: _____ **Parent signature:** _____ **Date:** _____

CRT comment re student preparation for task **Signature of CRT:** _____ **Date:** _____

Head Teacher Comment:

Recommendation of Head Teacher:

- | | |
|---|--|
| <input type="checkbox"/> Non-attempt, zero awarded, N award | <input type="checkbox"/> Late submission, zero awarded |
| <input type="checkbox"/> Resit | <input type="checkbox"/> Estimate to be given |
| <input type="checkbox"/> Extension of time granted | <input type="checkbox"/> Other |

Signature of HT _____ **Date:** _____

Decision of Deputy Principal Approved Not approved

Comment (Optional)

Signature of DP: _____ **Date:** _____

*Office Use: *HT to consult with CRT; HT to submit appeal to DP; DP considers application and consults with principal if required; DP informs HT of response; HT informs student *Original to student file; two copies to Faculty HT teacher for monitoring folder and copy to give to the student*



Assessment Task Cover Sheet

Upon submission of any task (except formal examinations periods) students are to have the top section of their cover sheet signed as a form of receipt that the task was received. If a dispute arises as to whether a task has been completed, the student MUST be able to produce this receipt as supporting evidence.

Acknowledgement by student, I certify that:

- the planning, development, content and presentation of this task is my own work in every respect
- it has not been copied from another person’s work or from books or from the internet or any other source
- This assessment task is entirely my own work, except where I have included documented references to the work of others.
- I have taken proper and reasonable care to prevent this work from being copied by another student

Student Name:

Signature:

Subject:

Task Name/#

Date Due:

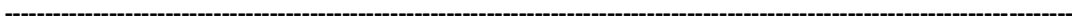
Date Submitted:

Submitted to:

Signature:

(Teacher)

(Teacher)



Assessment Task Cover Sheet

Record of Receipt

Upon receipt of an assessment task students need to complete the section below and provide this to the teacher as a record that you:

- Received the task
- Are aware of the due date
- Have had the task explained to you and aware of what needs to be completed

Subject:

Task Name/#

Date Received

Date Due:

Student Name:

Signature:

The Senior Study

The Senior Study is designed to provide guidance and support as you embark on your HSC journey in your last two years of school. The space provides Year 11 and 12 with opportunities to study both independently and in groups whilst being able to access a wide range of resources including a computer room and laptops to develop your learning and understanding of your chosen senior subjects.

With the help of the Senior Study teachers, you will have access to teachers on a regular basis to assist with navigating all the elements that make up Stage 6 learning - assessment tasks, exams, homework, studying and class work. The teachers are also available via a booking system, if you wish to arrange a time to sit down and discuss your progress.

Our goal is to create a busy and energetic space where students are helping each other to be the best that they can be.



The Library

"In the nonstop tsunami of global information, Librarians provide us with floaties and teach us how to swim." Linton Weeks

The Library is a great place for research and study. Use your time wisely when you have a study period. It is important that you **follow the protocol** for study periods or periods where you are assigned to the Senior Study. Students must always report to the Senior Study in the first instance but may go to the Library once the teachers have liaised with Mrs Bailey.

If you do come to the library, ask Mrs Bailey for help to find that extra bit of information that will help you write that essay or understand what you are learning in class. There is more to research than Wikipedia and Mrs Bailey can show you the tricks to researching smarter not harder, how to find books, journal articles and credible websites. If you need assistance with your assessment tasks just ask. The Library is still a **great place to chill and read a book** but only if your assessment tasks are up to date and you need some R&R.

Positive Psychology Team

In Year 12 your Positive Psychology teachers and the Wellbeing head teacher offer a range of support. As you know, your wellbeing is a major concern of theirs. Some of the things they can assist you with include:

- stress
- an unexpected change of circumstances
- family issues
- pressure from work, home, friends
- financial hardship
- study

Essentially, they will listen, support you practically where they can and refer you to more specialised help where necessary.

Classroom Teachers and Head Teachers

Our teaching staff understand the pressures of the HSC course. If you are worried about classwork or assessment tasks, please speak with your teacher promptly rather than worry. They are able to clarify expectations and tasks. Head teachers are also available if you need further clarification, support or an application for Special Consideration.

The Futures Centre

The Futures Centre is where students should come to get advice on how to achieve their very best. If they want to discuss options for study within school and for future endeavours go to the Futures Centre and ask.

We offer advice on a variety of topics such as -

- Subject choices
- TAFE and university
- Community projects
- Scholarships
- Career planning
- ATAR information
- NESA information

The staff in the Futures Centre are happy to help.

Ms Karan, HT Secondary Studies - Futures

Principal and Deputy Principal

Both the Principal and you Deputy Principal are always available to discuss any issues or queries that may be concerning you. Please call in and have a chat. It is always better to discuss a concern than let something become a major issue. The office staff can always pass on a message if they are not available when you call in.

Counsellors and School Psychologist

The counselling team at Plumpton are available to discuss any concerns that require more specialised support. You can self-refer by using the forms outside the counsellor office but a conversation with the principal or deputy may speed up the referral process. Our counsellors can help with a range of concerns including stress, anxiety and relationship issues with friends, family and others. Counsellor support can help you manage an issue that you felt was getting out of control. It can be challenging to accept this support, but it is often very worthwhile.

Rights and Responsibilities

It is your responsibility to read this information carefully. The following points apply to all students studying any subject in any faculty at Plumpton High School

The school is responsible for providing:

- set tasks which will measure your performance in each component of the course.
- an assessment schedule and course requirements for each course
- at least two weeks notification that an assessment task will take place or be due.
- appropriate notice of a change to a previously notified task
- advice on procedures to be followed in the event of an illness or misadventure preventing you from completing an assessment task or examination on time.
- advice on the procedure and consequences which flow from failure to maintain satisfactory progress.
- prompt feedback on each task. If you are concerned about a mark or rank on a particular task, you should speak to your teacher as soon as possible after results are issued.
- we must also keep records of your performance in these tasks.

As a student, you are responsible for:

- meeting all course requirements
- applying yourself with diligence and sustained effort to the set tasks and experiences provided in each course by being present for all **timetabled classes, positive psychology assemblies, year meetings** and **work placements**.
- being on time for all classes and maintaining a high level of attendance
- making a serious attempt at all assessment tasks. If you do not make a serious attempt at assessment tasks worth in excess of 50% of the available marks you may receive an N determination in a course
- attending all exams punctually with the appropriate equipment or communicate with school if there is an issue
- integrity – work submitted must be your own and sources consulted must be acknowledged.
- submitting all tasks on or before the due date, including those due during work placement.
- in the case of VET students, ensure you are properly equipped and dressed.
- ensuring appointments are made at times when there are no scheduled assessment tasks
- explaining all absences to your teachers and the office, by providing documentation such as a medical certificate and a note
- contacting your teacher if there is an issue with work placement or other offsite requirements.
- follow the Application for Special Consideration process where appropriate.

Glossary of Key Words

- These key HSC words give definitions, as they will be commonly used in assessment tasks at Plumpton High School.

Account	Account for: state reasons for, report on. Give an account of: narrate a series of events or transactions
Analyse	Identify components and the relationship between them; draw out and relate implications
Apply	Use, utilise, employ in a particular situation
Appreciate	Make a judgement about the value of
Assess	Make a judgement of value, quality, outcomes, results or size
Calculate	Ascertain/determine from ISSUED facts, figures or information
Clarify	Make clear or plain
Classify	Arrange or include in classes/categories
Compare	Show how things are similar or different
Construct	Make; build; put together items or arguments
Contrast	Show how things are different or opposite
Critically (analyse/evaluate)	Add a degree or level of accuracy depth, knowledge and understanding, logic, questioning, reflection and quality to (analyse/evaluate)
Deduce	Draw conclusions
Define	State meaning and identify essential qualities
Demonstrate	Show by example
Describe	Provide characteristics and features
Discuss	Identify issues and provide points for and/or against
Distinguish	Recognise or note/indicate as being distinct or different from; to note differences between
Evaluate	Make a judgement based on criteria; determine the value of
Examine	Inquire into
Explain	Relate cause and effect; make the relationships between things evident; provide why and/or how
Extract	Choose relevant and/or appropriate details
Extrapolate	Infer from what is known
Identify	Recognise and name
Interpret	Draw meaning from
Investigate	Plan, inquire into and draw conclusions about
Justify	Support an argument or conclusion
Outline	Sketch in general terms; indicate the main features of
Predict	Suggest what may happen based on available information
Propose	Put forward (for example a point of view, idea, argument, suggestion) for consideration or action
Recall	Present remembered ideas, facts or experiences
Recommend	Provide reasons in favour
Recount	Retell a series of events
Summarise	Express, concisely, the relevant details
Synthesise	Putting together various elements to make a whole

Plumpton High School – Assessment Task/Exam Scenarios

Students should always complete/hand in the task/exam as soon as possible and follow it up with an Application for Special Consideration to avoid a zero mark.

Scenario	Action	Follow-Up
<p><i>You are absent on day a task is held due to illness e.g. examination, practical assessment, oral assessment.</i></p>	<ul style="list-style-type: none"> Parent or caregiver should phone or contact the school to notify the teacher/head teacher of the illness. <i>This must be done on the day of the task.</i> To verify the seriousness of the illness, you will require a medical certificate 	<ul style="list-style-type: none"> Upon the first day of return to school you should see you teacher and complete/hand in the task/exam Complete an Application for Special Consideration and submit to the head teacher, with evidence, within 48 hours. After the deputy principal considers your appeal, you will be notified of the outcome (whether you will receive the marks gained/re sit the task/receive zero marks
<p><i>You are absent on day a task is to be submitted.</i></p>	<ul style="list-style-type: none"> Parent or caregiver should phone or contact the school to make arrangements with the teacher/head teacher for submission of the task. <i>This must be done on the day of the task.</i> 	<ul style="list-style-type: none"> The task needs to be delivered to the school on (or before) the due date.
<p><i>You become aware of an upcoming absence on the day of a scheduled task.</i></p>	<ul style="list-style-type: none"> You are to notify class teacher as early as possible. Note: You should avoid medical appointments, driving tests, family holidays that conflict with published assessment items. 	<ul style="list-style-type: none"> Complete the Application for Special Consideration and submit it to the subject head teacher, with supporting evidence, including parent’s signature. After the deputy principal considers your appeal, you will be notified of the outcome
<p><i>You become aware that you have take home and/or in class tasks due when you have work placement for another subject</i></p>	<ul style="list-style-type: none"> You are to notify class teacher as early as possible. 	<ul style="list-style-type: none"> Hand in task: make arrangements with the teacher of that subject to hand the task in earlier or for a reliable friend/family member to hand it in on the due date on your behalf. In class task/exam: complete the Application for Special Consideration before you start work placement and submit it to the subject head teacher, with supporting evidence. The deputy principal will make a decision about when to re sit the task/exam
<p><i>You fail to submit an assessment task at the appropriate time.</i></p>	<ul style="list-style-type: none"> Every assessment task is designed to assist your understanding of the course. It is important that you complete, to a satisfactory standard, all assessment tasks. 	<ul style="list-style-type: none"> Class teacher will notify the head teacher. N-determination warning letter will be sent to your parents along with notification of a ZERO grade. If you believe you have good reasons complete the Application for Special Consideration and submit it to the subject head teacher, with supporting evidence. You must still submit the task to satisfy HSC requirements.
<p><i>You arrive at school to become aware you have accidentally left your task or equipment at home.</i></p>	<ul style="list-style-type: none"> You are to notify teacher/head teacher immediately. Provision may be made for you to return home or parents contacted. 	<ul style="list-style-type: none"> If you follow all procedures promptly, no penalty will be incurred, as long as you return in time to complete the set task.

Scenario	Action	Follow-Up
<p><i>You experience technical difficulties in publication of a task.</i></p>	<ul style="list-style-type: none"> Always back up work on a computer disk. Keep draft copies of <u>all</u> work. 	<ul style="list-style-type: none"> No provision can be made for computer problems. You submit hand written copy and any available draft copies. Complete the Application for Special Consideration if relevant and submit it to the subject head teacher, with supporting evidence/explanation.
<p><i>You are experiencing difficulty in completing a research task.</i></p>	<ul style="list-style-type: none"> You must discuss any difficulties with your class teacher well before the due date. Written application for extension may be made to the teacher/head teacher via the Application for Special Consideration. The deputy principal will consider this. This must be submitted at least THREE days prior to due date. 	<ul style="list-style-type: none"> You will be advised if you have been granted an extension. If an extension is granted, you must submit the task by the new due date.
<p><i>You submit work which is not your own.</i></p>	<ul style="list-style-type: none"> All materials used in research must be appropriately referenced (including Internet). 	<ul style="list-style-type: none"> Using the work of others and presenting it as your own is a serious offence. The consequence will be zero marks awarded for the task, N-determination warning letter and an interview.
<p><i>You complete task of poor quality.</i></p>	<ul style="list-style-type: none"> Every assessment task is designed to assist your understanding of the course. It is important that you complete, to a satisfactory standard, all assessment tasks. 	<ul style="list-style-type: none"> Your teacher/head teacher will notify you and your parents/caregivers that a non-serious attempt was made and you will be issued with an N Warning. Complete the Application for Special Consideration if you believe you have reason and submit it to the subject head teacher, with supporting evidence. You will need to resubmit the task at an appropriate standard to satisfy HSC requirements. The marks awarded from your initial submission will stand without alteration unless the Application for Special Consideration is granted.
<p><i>You are unprepared for an oral task presentation.</i></p>	<ul style="list-style-type: none"> You must be prepared to present the task on the first day listed, regardless of your position in the published order. 	<ul style="list-style-type: none"> If you are not prepared to deliver the task when called upon, a ZERO grade will be awarded, and you will be issued with an N-determination warning letter. Complete the Application for Special Consideration if you believe you have reason and submit it to the subject head teacher, with supporting evidence.
<p><i>You attend school on the day task is due but you go home sick prior to the lesson when the task is to be submitted.</i></p>	<ul style="list-style-type: none"> It is your responsibility to submit the task to your teacher/head teacher prior to leaving school. 	<ul style="list-style-type: none"> If you fail to submit the task on date due it will receive a ZERO grade/mark and you will be issued with an N-determination warning letter. Complete the Application for Special Consideration if you believe you have reason and submit it to the subject head teacher, with supporting evidence.



ASSESSMENT SCHEDULES



PLUMPTON HIGH SCHOOL

Assessment Schedule 2024/2025

ABORIGINAL STUDIES

HSC Course

1. Assessment Schedule

COMPONENTS	SYLLABUS WEIGHTINGS	TASK 1 Global Perspective	TASK 2 Research & Inquiry	TASK 3 Trial	TASK 4 Aboriginality & The Land
Knowledge & understanding of course content	40%	10%	10%	15%	5%
Investigating, analysis, synthesis and evaluation of information from a variety of sources and perspectives	25%	10%	5%	10%	
Research and inquiry methods	20%		10%		10%
Communication of information, ideas and issues in appropriate forms	15%	5%		5%	5%
TOTAL	100%	25%	25%	30%	20%
PROPOSED OUTCOMES TO BE ASSESSED		H1.2, H3.1, H3.2, H3.3, H4.1, H4.3	H4.1, H4.2	H1.1, H1.2, H2.2, H3.1, H3.2, H3.3	H1.2, H1.3, H2.1, H2.2
TYPE OF TASK		Media Presentation	Major Project	Trial Examination	In class essay
DATE ISSUED		Week 5 Term 4 2024	Week 1 Term 4 2024	Week 7 Term 2 2025	Week 3 Term 3 2025
DATE DUE		Week 7 Term 4 2024	Week 11 Term 1 2025	Weeks 9-10 Term 2 2025	Week 5 Term 3 2025

2. Outcomes

A student:

- H1.1 evaluates the impact of different viewpoints of colonialism on Aboriginal and other Indigenous people
- H1.2 analyses and discusses the social justice and human rights issues that are contemporary consequences of colonialism on Aboriginal and other Indigenous peoples
- H1.3 assesses the representation of Aboriginal peoples and cultures for bias and stereotyping
- H2.1 examines contemporary expressions of Aboriginal and other Indigenous peoples' culture, heritage and identity
- H2.2 analyses the importance of Country as a contemporary issue impacting on Aboriginal and other Indigenous peoples' cultural, political, social and economic life
- H3.1 assesses the effectiveness of government policies, legislation and legal decisions in addressing discrimination
- H3.2 evaluates the impact of key government policies, legislation and legal decisions on the socioeconomic status of Aboriginal peoples and communities
- H3.3 evaluates initiatives that promote the social, economic and political independence of Aboriginal and other Indigenous peoples
- H4.1 plans, investigates, analyses, synthesises and communicates relevant information, incorporating Aboriginal and other Indigenous peoples' perspectives
- H4.2 undertakes community consultation and fieldwork and applies ethical research practices
- H4.3 investigates and compares the histories and cultures of Aboriginal peoples and other Indigenous peoples



PLUMPTON HIGH SCHOOL

Assessment Schedule 2024/2025

AGRICULTURE

HSC Course

1. Assessment Schedule

COMPONENTS	SYLLABUS WEIGHTINGS	TASK 1	TASK 2	TASK 3	TASK 4
Knowledge and understanding of course content	40%	10%	10%	15%	5%
Knowledge, understanding and skills required to manage agricultural production systems	40%	5%	10%	15%	10%
Skills in effective research, experimentation and communication	20%	10%	5%		5%
TOTAL	100%	25%	25%	30%	20%
PROPOSED OUTCOMES TO BE ASSESSED		H1.1 H2.1 H4.1	H1.1 H2.2 H4.1	H1.1, H2.1, H2.2, H3.1, H3.2, H3.3 H3.4	H3.4 H4.1 H5.1
TYPE OF TASK		Plant Trial Investigation	Animal IPM	Trial Examination	Product Report
DATE ISSUED		Week 1 Term 4 2024	Week 4 Term 1 2025	Week 7 Term 2 2025	Week 1 Term 3 2025
DATE DUE		Week 9 Term 4 2024	Week 8 Term 1 2025	Week 9-10 Term 2 2025	Week 4 Term 3 2025

2. Outcomes

A student:

- H1.1 explains the influence of physical, biological, social, historical and economic factors on sustainable agricultural production
- H2.1 describes the inputs, processes and interactions of plant production systems
- H2.2 describes the inputs, processes and interactions of animal production systems
- H3.1 assesses the general business principles and decision-making processes involved in sustainable farm management and marketing of farm products
- H3.2 critically assesses the marketing of a plant OR animal product
- H3.3 critically examines the technologies and technological innovations employed in the production and marketing of agricultural products
- H3.4 evaluates the management of the processes in agricultural systems
- H4.1 justifies and applies appropriate experimental techniques, technologies, research methods and data presentation and analysis in relation to agricultural problems and situations
- H5.1 evaluates the impact of innovation, ethics and current issues on Australian agricultural systems



PLUMPTON HIGH SCHOOL

Assessment Schedule 2024/2025

ANCIENT HISTORY

HSC Course

1. Assessment Schedule

COMPONENTS	SYLLABUS WEIGHTINGS	TASK 1 Core	TASK 2 Ancient Society	TASK 3 Components 1,2,3	TASK 4 Personality
Knowledge & understanding of course content	40%	5%	5%	20%	10%
Historical skills in the analysis and evaluation of sources and interpretations	20%	5%	5%	5%	5%
Historical inquiry and research	20%	5%	10%		5%
Communication of historical understanding in appropriate forms	20%	5%	5%	5%	5%
TOTAL	100%	20%	25%	30%	25%
PROPOSED OUTCOMES TO BE ASSESSED		AH12.5, AH12.6, AH12.8 AH12.9	AH12.2, AH12.5, AH12.7, AH12.8, AH12.9	AH12.1, AH 12.2, AH12.3, AH12.6, AH12.9,AH12.10	AH12.3, AH12.4, AH12.7, AH12.9
TYPE OF TASK		Source Based Research Task	Site Study	Trial Examination	Research Report / In class response
DATE ISSUED		Week 4 Term 4 2024	Week 4 Term 1 2025	Week 7 Term 2 2025	Week 2 Term 3 2025
DATE DUE		Week 8 Term 4 2024	Week 7 Term 1 2025	Weeks 9-10 Term 2 2025	Week 5 Term 3 2025

2. Outcomes

A student:

AH12-1 accounts for the nature of continuity and change in the ancient world

AH12-2 proposes arguments about the varying causes and effects of events and developments

AH12-3 evaluates the role of historical features, individuals and groups in shaping the past

AH12-4 analyses the different perspectives of individuals and groups in their historical context

AH12-5 assesses the significance of historical features, people, places, events and developments of the ancient world

AH12-6 analyses and interprets different types of sources for evidence to support an historical account or argument

AH12-7 discusses and evaluates differing interpretations and representations of the past

AH12-8 plans and conducts historical investigations and presents reasoned conclusions, using relevant evidence from a range of sources

AH12-9 communicates historical understanding, using historical knowledge, concepts and terms, in appropriate and well-structured forms

AH12-10 analyses issues relating to the ownership, custodianship and conservation of the ancient past



PLUMPTON HIGH SCHOOL

Assessment Schedule 2024/2025

BIOLOGY

HSC Course

1. Assessment Schedule

COMPONENTS	SYLLABUS WEIGHTINGS	TASK 1 Module 5	TASK 2 Module 6	TASK 3 Module 5-7	TASK 4 Module 8
Knowledge and understanding of module topics: <ul style="list-style-type: none">• Heredity• Genetic change• Infectious Disease• Non Infectious disease and disorders	40%		10%	25%	5%
<ul style="list-style-type: none">• Skills in:• Questioning and predicting• Communicating scientifically• Processing data and information• Analysing data and information• Problem solving• Planning investigations• Conducting investigations	60%	20%	20%	5%	15%
TOTAL	100%	20%	30%	30%	20%
PROPOSED OUTCOMES TO BE ASSESSED		BIO12-2 BIO12-3 BIO12-4 BIO12-5	BIO12-1 BIO12-3 BIO12-5 BIO12-7 BIO12-13	BIO12-4 BIO12-12 BIO12-13 BIO12-14	BIO12-5 BIO12-6 BIO12-7 BIO12-15
TYPE OF TASK		Practical Task	Depth Study	Trial Examination	Using Secondary Sources
DATE ISSUED		Week 8 Term 4 2024	Week 8 Term 1 2025	Week 7 Term 2 2025	Week 3 Term 3 2025
DATE DUE		Week 10 Term 4 2024	Week 6 Term 2 2025	Weeks 9-10 Term 2 2025	Week 6 Term 3 2025

2. Outcomes

A student:

- BIO12-1 develops and evaluates questions and hypotheses for scientific investigation
- BIO12-2 designs and evaluates investigations in order to obtain primary and secondary data and information
- BIO12-3 conducts investigations to collect valid and reliable primary and secondary data and information
- BIO12-4 selects and processes appropriate qualitative and quantitative data and information using a range of appropriate media
- BIO12-5 analyses and evaluates primary and secondary data and information
- BIO12-6 solves scientific problems using primary and secondary data, critical thinking skills and scientific processes
- BIO12-7 communicates scientific understanding using suitable language and terminology for a specific audience or purpose
- BIO12-12 explains the structures of DNA and analyses the mechanisms of inheritance and how processes of reproduction ensure continuity of species
- BIO12-13 explains natural genetic change and the use of genetic technologies to induce genetic change
- BIO12-14 analyses infectious disease in terms of cause, transmission, management and the organism's response, including the human immune system
- BIO12-15 explains non-infectious disease and disorders and a range of technologies and methods used to assist, control, prevent and treat non-infectious disease



PLUMPTON HIGH SCHOOL

Assessment Schedule 2024/2025

BUSINESS STUDIES

HSC Course

1. Assessment Schedule

COMPONENTS	SYLLABUS WEIGHTINGS	TASK 1 Operations	TASK 2 Finance	TASK 3 Marketing	TASK 4 Human Resources
Knowledge & understanding of course content	40%	5%	10%	15%	10%
Stimulus based skills	20%	10%		10%	
Inquiry and research	20%		10%		10%
Communication of business ideas and issues	20%	5%	5%	5%	5%
TOTAL	100%	20%	25%	30%	25%
PROPOSED OUTCOMES TO BE ASSESSED		H2, H5, H9	H6, H9, H10	H1, H3, H4, H7, H9,	H4, H5, H6, H8, H9
TYPE OF TASK		Scenario based Report Task	Finance Topic Test In-class	Trial Examination	Extended Response/Report
DATE ISSUED		Week 6 Term 4 2024	Week 6 Term 1 2025	Week 7 Term 2 2025	Week 3 Term 3 2025
DATE DUE		Week 9 Term 4 2024	Week 8 Term 1 2025	Weeks 9-10 Term 2 2025	Week 6 Term 3 2025

2. Outcomes

A student:

- H1 critically analyses the role of business in Australia and globally
- H2 evaluates management strategies in response to changes in internal and external influences
- H3 discusses the social and ethical responsibilities of management
- H4 analyses business functions and processes in large and global businesses
- H5 explains management strategies and their impact on businesses
- H6 evaluates the effectiveness of management in the performance of businesses
- H7 plans and conducts investigations into contemporary business issues
- H8 organises and evaluates information for actual and hypothetical business situations
- H9 communicates business information, issues and concepts in appropriate formats
- H10 applies mathematical concepts appropriately in business situations



PLUMPTON HIGH SCHOOL

Assessment Schedule 2024/2025

CHEMISTRY

HSC Course

1. Assessment Schedule

COMPONENTS	SYLLABUS WEIGHTINGS	TASK 1 Module 5	TASK 2 Module 6	TASK 3 Module 5-7	TASK 4 Module 8
Knowledge and understanding of module topics <ul style="list-style-type: none">Equilibrium and Acid ReactionsAcid/Base ReactionsOrganic ChemistryApplying Chemical Ideas	40 %	10%	10%	15%	5%
Skills in: <ul style="list-style-type: none">Questioning and predictingCommunicating scientificallyProcessing data and informationAnalysing data and informationProblem solvingPlanning investigationsConducting investigations	60%	25%	10%	15%	10%
TOTAL	100%	35%	20%	30%	15%
PROPOSED OUTCOMES TO BE ASSESSED		CH12-1 CH12-2 CH12-3 CH12-5 CH12-7 CH12-12	CH12-2 CH12-3 CH12-4 CH12-13	CH12-4 CH12-5 CH12-6 CH12-12 CH12-13 CH12-14	CH12-4 CH12-5 CH12-7 CH12-15
TYPE OF TASK		Depth Study	Practical Task	Trial Examination	Oral Presentation
DATE ISSUED		Week 3 Term 4 2024	Week 7 Term 1 2025	Week 7 Term 2 2025	Week 2 Term 3 2025
DATE DUE		Week 9 Term 4 2024	Week 9 Term 1 2025	Weeks 9-10 Term 2 2025	Week 6 Term 3 2025

2. Outcomes

A student:

- CH12-1 develops and evaluates questions and hypotheses for scientific investigation
- CH12-2 designs and evaluates investigations in order to obtain primary and secondary data and information
- CH12-3 conducts investigations to collect valid and reliable primary and secondary data and information
- CH12-4 selects and processes appropriate qualitative and quantitative data and information using a range of appropriate media
- CH12-5 analyses and evaluates primary and secondary data and information
- CH12-6 solves scientific problems using primary and secondary data, critical thinking skills and scientific processes
- CH12-7 communicates scientific understanding using suitable language and terminology for a specific audience or purpose
- CH12-12 explains the characteristics of equilibrium systems, and the factors that affect these systems
- CH12-13 describes, explains and quantitatively analyses acids and bases using contemporary models
- CH12-14 analyses the structure of, and predicts reactions involving, carbon compounds
- CH12-15 describes and evaluates chemical systems used to design and analyse chemical processes



PLUMPTON HIGH SCHOOL

Assessment Schedule 2024/2025

COMMUNITY & FAMILY STUDIES (CAFS)

HSC Course

1. Assessment Schedule

COMPONENTS	SYLLABUS WEIGHTINGS	TASK 1 Core 1	TASK 2 Core 2	TASK 3 All Cores	TASK 4 Option
Knowledge and understanding of course content	40%	10%	10%	10%	10%
Skills in critical thinking, research methodology, analysing and communicating	60%	10%	20%	15%	15%
TOTAL	100%	20%	30%	25%	25%
PROPOSED OUTCOMES TO BE ASSESSED		4.1, 4.2	3.2, 3.3, 5.1, 7.1, 7.2	1.1, 2.1, 2.2, 3.1, 5.2, 6.1, 6.2, 7.4	2.3, 3.4, 7.3
TYPE OF TASK		Independent Research Project	Report	Trial Examination	Report
DATE ISSUED		Week 2 Term 4 2024	Week 5 Term 1 2025	Week 7 Term 2 2025	Week 1 Term 3 2025
DATE DUE		Week 10 Term 4 2024	Week 10 Term 1 2025	Weeks 9-10 Term 2 2025	Week 5 Term 3 2025

2. Outcomes

A student:

- H1.1 analyses the effect of resource management on the wellbeing of individuals, groups, families and communities
- H2.1 analyses different approaches to parenting and caring relationships
- H2.2 evaluates strategies to contribute to positive relationships and the wellbeing of individuals, groups, families and communities
- H2.3 critically examines how individual rights and responsibilities in various environments contribute to wellbeing
- H3.1 analyses the sociocultural factors that lead to special needs of individuals in groups
- H3.2 evaluates networks available to individuals, groups and families within communities
- H3.3 critically analyses the role of policy and community structures in supporting diversity
- H3.4 critically evaluates the impact of social, legal and technological change on individuals, groups, families and communities
- H4.1 justifies and applies appropriate research methodologies
- H4.2 communicates ideas, debates issues and justifies opinions
- H5.1 proposes management strategies to enable individuals and groups to satisfy their specific needs and to ensure equitable access to resources
- H5.2 develops strategies for managing multiple roles and demands of family, work and other environments
- H6.1 analyses how the empowerment of women and men influences the way they function within society
- H6.2 formulates strategic plans that preserve rights, promote responsibilities and establish roles leading to the creation of positive social environments
- 7.1 appreciates differences among individuals, groups and families within communities and values their contributions to society
- 7.2 develops a sense of responsibility for the wellbeing of themselves and others
- 7.3 appreciates the value of resource management in response to change
- 7.4 values the place of management in coping with a variety of role expectations



PLUMPTON HIGH SCHOOL

Assessment Schedule 2024/2025

DANCE

HSC Course

1. Assessment Schedule

COMPONENTS	SYLLABUS WEIGHTINGS	TASK 1 Performance Appreciation	TASK 2 Major Study	TASK 3 Composition Appreciation	TASK 4 All Components
Performance	20%	15%			5%
Composition	20%			15%	5%
Appreciation	20%	5%	5%	5%	5%
Major Study	40%		25%		15%
TOTAL	100%	20%	30%	20%	30%
PROPOSED OUTCOMES TO BE ASSESSED		H2.2, H4.2, H4.4	Outcomes relevant to major study	H3.1, H3.2, H4.5	H2.1, H2.3, H3.3, H3.4, H4.1, H4.3
TYPE OF TASK		Presentation of core performance and written task	Presentation of major study	Presentation of composition work and rationale	HSC Trial examinations
DATE ISSUED		Week 2 Term 4 2024	Week 3 Term 1 2025	Week 1 Term 2 2025	Week 1 Term 2 2025
DATE DUE		Week 9 Term 4 2024	Week 10 Term 1 2025	Week 6 Term 2 2025	Weeks 9-10 Term 2 2025

2. Outcomes

A student:

- H2.1 understands performance quality, interpretation and style relating to dance performance
- H2.2 performs dance skills with confidence, commitment, focus, consistency, performance quality and with due consideration of safe dance practices
- H2.3 values the diversity of dance performance
- H3.1 identifies and selects the appropriate elements of composition/ choreography in response to a specific concept/intent
- H3.2 demonstrates the use of the elements of composition/ choreography in a personal style in response to a specific concept/intent
- H3.3 recognises and values the role of dance in achieving individual expression
- H3.4 explores, applies and demonstrates the combined use of compositional principles and technological skills in a personal style in response to a specific concept/intent
- H4.1 understands the concept of differing artistic, social and cultural contexts of dance
- H4.2 recognises, analyses and evaluates the distinguishing features of major dance works
- H4.3 utilises the skills of research and analysis to examine dance as an artform
- H4.4 demonstrates in written and oral form, the ability to analyse and synthesise information when making discriminating judgments about dance
- H4.5 acknowledges that the artform of dance is enhanced through reflective practice, study and evaluation



PLUMPTON HIGH SCHOOL

Assessment Schedule 2024/2025

DRAMA

HSC Course

1. Assessment Schedule

COMPONENTS	SYLLABUS WEIGHTINGS	TASK 1	TASK 2	TASK 3	TASK 4
Making	40%	20%	10%		10%
Performing	30%		10%		20%
Critically Studying	30%			30%	
TOTAL	100%	20%	20%	30%	30%
PROPOSED OUTCOMES TO BE ASSESSED		H1.7 H1.5	H1.1 H1.2 H2.3	H3.1 H3.2 H3.3	H1.3 H1.4 H1.6 H2.1 H2.2
TYPE OF TASK		Individual Project Proposal	Performance Workshop	Trial Examination - Written Paper	Trial Examination – GDP and IP
DATE ISSUED		Week 1 Term 4 2024	Week 2 Term 1 2025	Week 1 Term 2 2025	Week 1 Term 2 2025
DATE DUE		Week 9 Term 4 2024	Week 9 Term 1 2025	Week 9-10 Term 2 2025	Week 1-2 Term 3 2025

2. Outcomes

A student:

- H1.1 Uses acting skill to adopt and sustain a variety of characters and roles.
- H1.2 Uses performance skills to interpret and perform scripted and other material.
- H1.3 Uses knowledge and experience of dramatic and theatrical forms, styles and theories to inform and enhance individual and group devised work.
- H1.4 Collaborates effectively to produce a group-devised performance.
- H1.5 Demonstrates directorial skills.
- H1.6 Records refined group performance work in appropriate form.
- H1.7 Demonstrates skills in using the elements of production.
- H2.1 Demonstrates effective performance skills.
- H2.2 Uses dramatic and theatrical elements effectively to engage an audience.
- H2.3 Demonstrates directorial skills for theatre and other media.
- H3.1 Critically applies understanding of the cultural, historical and political contexts that have influenced specific drama and theatre practitioners, styles and movements.
- H3.2 Analyses, synthesizes and organises knowledge, information and opinion in coherent, informed oral and written responses.
- H3.3 Demonstrates understanding of the actor-audience relationship in various dramatic and theatrical styles and movement.



PLUMPTON HIGH SCHOOL

Assessment Schedule 2024/2025

EARTH AND ENVIRONMENTAL SCIENCE

HSC Course

3. Assessment Schedule

COMPONENTS	SYLLABUS WEIGHTINGS	TASK 1 Module 5	TASK 2 Module 6	TASK 3 Module 5-7	TASK 4 Module 8
Knowledge and understanding of module topics <ul style="list-style-type: none"> ▪ Earth's Processes ▪ Hazards ▪ Climate Science ▪ Resource Management ▪ Resource Management 	40%	5%	5%	25%	5%
Skills in: <ul style="list-style-type: none"> ▪ Questioning and predicting ▪ Communicating scientifically ▪ Processing data and information ▪ Analysing data and information ▪ Problem solving ▪ Planning Investigations ▪ Conducting Investigations 	60%	15%	30%	5%	10%
TOTAL	100%	20%	35%	30%	15%
PROPOSED OUTCOMES TO BE ASSESSED		ESS12-4 ESS12-5 ESS12-6 ESS12-12	ESS12-1, ESS12-2, ESS12-3, ESS12-5, ESS12-7, ESS12-13	ESS12-6 ESS12-12 ESS12-13 ESS12-14	ESS12-5 ESS12-7 ESS12-15
TYPE OF TASK		Processing Data Task	Depth Study	Trial Examination	Research Task
DATE ISSUED		Week 5 Term 4 2024	Week 7 Term 1 2025	Week 7 Term 2 2025	Week 2 Term 3 2025
DATE DUE		Week 9 Term 4 2024	Week 10 Term 1 2025	Weeks 9-10 Term 2 2025	Week 6 Term 3 2025

4. Outcomes

A student:

ESS12-1 develops and evaluates questions and hypotheses for scientific investigation

ESS12-2 designs and evaluates investigations in order to obtain primary and secondary data and information

ESS12-3 conducts investigations to collect valid and reliable primary and secondary data and information

ESS12-4 selects and processes appropriate qualitative and quantitative data and information using a range of appropriate media

ESS12-5 analyses and evaluates primary and secondary data and information

ESS12-6 solves scientific problems using primary and secondary data, critical thinking skills and scientific processes

ESS12-7 communicates scientific understanding using suitable language and terminology for a specific audience or purpose

ESS12-12 describes and evaluates the models that show the structure and development of the Earth over its history

ESS12-13 describes and evaluates the causes of the Earth's hazards and the ways in which they affect, and are affected by, the Earth's systems

ESS12-14 analyses the natural processes and human influences on the Earth, including the scientific evidence for changes in climate

ESS12-15 describes and assesses renewable and non-renewable Earth resources and how their extraction, use, consumption and disposal affect the Earth's systems



PLUMPTON HIGH SCHOOL

Assessment Schedule 2024/2025

ENGINEERING STUDIES

HSC Course

1. Assessment Schedule

COMPONENTS	SYLLABUS WEIGHTINGS	TASK 1	TASK 2	TASK 3	TASK 4
Knowledge and understanding of engineering principles and developments in technology	50%	10%	15%	15%	10%
Skills in research, problem solving and communication related to engineering	30%	5%	5%	10%	10%
Understanding the scope and role of engineering including management and problem solving	20%	5%	5%	5%	5%
TOTAL	100%	20%	25%	30%	25%
PROPOSED OUTCOMES TO BE ASSESSED		H1.2, H3.3, H6.2	H2.1, H4.1, H4.3	H1.1, H3.1, H4.2	H2.2, H3.2, H6.1
TYPE OF TASK		Practical Application	Engineering Report	Exam	Engineering Report
DATE ISSUED		Week 2 Term 4 2024	Week 2 Term 1 2025	Week 7 Term 2 2025	Week 2 Term 2 2025
DATE DUE		Week 8 Term 4 2024	Week 6 Term 1 2025	Week 9-10 Term 2 2025	Week 1 Term 3 2025

2. Outcomes

A student:

- H1.1 describes the scope of engineering and critically analyses current innovations
- H1.2 differentiates between the properties and structure of materials and justifies the selection of materials in engineering applications
- H2.1 determines suitable properties, uses and applications of materials, components and processes in engineering
- H2.2 analyses and synthesises engineering applications in specific fields and reports on the importance of these to society
- H3.1 demonstrates proficiency in the use of mathematical, scientific and graphical methods to analyse and solve problems of engineering practice
- H3.2 uses appropriate written, oral and presentation skills in the preparation of detailed engineering reports
- H3.3 develops and uses specialised techniques in the application of graphics as a communication tool
- H4.1 investigates the extent of technological change in engineering
- H4.2 applies knowledge of history and technological change to engineering-based problems
- H4.3 applies understanding of social, environmental and cultural implications of technological change in engineering to the analysis of specific engineering problems
- H5.1 works individually and in teams to solve specific engineering problems and prepare engineering reports
- H5.2 selects and uses appropriate management and planning skills related to engineering
- H6.1 demonstrates skills in research and problem-solving related to engineering
- H6.2 demonstrates skills in analysis, synthesis and experimentation related to engineering



PLUMPTON HIGH SCHOOL

Assessment Schedule 2024/2025

ENGLISH ADVANCED

HSC Course

1. Assessment Schedule

COMPONENTS	SYLLABUS WEIGHTINGS	TASK 1 Common Module	TASK 2 Module A	TASK 3 Common Module, Module A & Module B	TASK 4 Module C
Knowledge and understanding of course content	50%	10%	10%	20%	10%
Skills in responding to texts and communication of ideas appropriate to audience, purpose and context across all modes	50%	15%	15%	5%	15%
TOTAL	100%	25%	25%	25%	25%
PROPOSED OUTCOMES TO BE ASSESSED		EN12-1 EN12-2 EN12-5	EN12-4 EN12-6 EN12-7,	EN12-1 EN12-2 EN12-3 EN12-4 EN12-5 EN12-6 EN12-7 EN12-8	EN12-2 EN12-3 EN12-4 EN12-9
TYPE OF TASK		In Class Extended Response	Multimodal Task	Trial Examination	Extended Response and Reflection
DATE ISSUED		Week 4 Term 4 2024	Week 4 Term 1 2025	Week 4 Term 2 2025	Week 1 Term 3 2025
DATE DUE		Week 8 Term 4 2024	Week 10 Term 1 2025	Weeks 9-10 Term 2 2025	Week 5 Term 3 2025

2. Outcomes

A student:

- EA12-1 independently responds to, composes and evaluates a range of complex texts for understanding, interpretation, critical analysis, imaginative expression and pleasure
- EA12-2 uses, evaluates and justifies processes, skills and knowledge required to effectively respond to and compose texts in different modes, media and technologies
- EA12-3 critically analyses and uses language forms, features and structures of texts justifying appropriateness for specific purposes, audiences and contexts and evaluates their effects on meaning
- EA12-4 strategically adapts and applies knowledge, skills and understanding of language concepts and literary devices in new and different contexts
- EA12-5 thinks imaginatively, creatively, interpretively, critically and discerningly to respond to, evaluate and compose texts that synthesise complex information, ideas and arguments
- EA12-6 investigates and evaluates the relationships between texts
- EA12-7 evaluates the diverse ways texts can represent personal and public worlds and recognises how they are valued
- EA12-8 explains and evaluates nuanced cultural assumptions and values in texts and their effects on meaning
- EA12-9 reflects on, evaluates and monitors own learning and refines individual and collaborative processes as an independent learner



PLUMPTON HIGH SCHOOL

Assessment Schedule 2024/2025

ENGLISH EXTENSION 1

HSC Course

1. Assessment Schedule

COMPONENTS	SYLLABUS WEIGHTINGS	TASK 1 Common Module	TASK 2 Elective	TASK 3 Common Module & Elective
Knowledge and Understanding of texts and why they are valued	50%	15%	20%	15%
Skills in complex analysis composition and investigation	50%	15%	20%	15%
TOTAL	100%	30%	40%	30%
PROPOSED OUTCOMES TO BE ASSESSED		EE12-2 EE12-4 EE12-5	EE12-1 EE12-2 EE12-3 EE12-4	EE12-2 EE12-3 EE12-4 EE12-5
TYPE OF TASK		Imaginative response & reflection	Critical response with related text	Trial Examination
DATE ISSUED		Week 4 Term 4 2024	Week 5 Term 1 2025	Week 4 Term 2 2025
DATE DUE		Week 9 Term 4 2024	Week 6 Term 2 2025	Weeks 9-10 Term 2 2025

2. Outcomes

A student:

- EE12-1 demonstrates and applies insightful understanding of the dynamic, often subtle, relationship between text, purpose, audience and context, across a range of modes, media and technologies
- EE12-2 analyses and experiments with language forms, features and structures of complex texts, discerningly evaluating their effects on meaning for different purposes, audiences and contexts
- EE12-3 independently investigates, interprets and synthesises critical and creative texts to analyse and evaluate different ways of valuing texts in order to inform and refine response to and composition of sophisticated texts
- EE12-4 critically evaluates how perspectives, including the cultural assumptions and values that underpin those perspectives, are represented in texts
- EE12-5 reflects on and evaluates the development of their conceptual understanding and the independent and collaborative writing and creative processes



PLUMPTON HIGH SCHOOL

Assessment Schedule 2024/2025

ENGLISH EXTENSION 2

HSC Course

1. Assessment Schedule

COMPONENTS	SYLLABUS WEIGHTINGS	TASK 1	TASK 2	TASK 3
Skills in extensive independent research	50%	15%	20%	15%
Skills in sustained composition	50%	15%	20%	15%
TOTAL	100%	30%	40%	30%
PROPOSED OUTCOMES TO BE ASSESSED		EEX12-1, EEX12-4, EEX12-5	EEX12-1, EEX12-2, EEX12-3, EEX12-4	EEX12-2, EEX12-3, EEX12-5
TYPE OF TASK		Viva Voce + Major Work Journal	Literature Review + Major Work Journal	Critique of the Creative Process + Major Work Journal
DATE ISSUED		Week 2 Term 4 2024	Week 3 Term 1 2025	Week 5 Term 2 2025
DATE DUE		Week 9 Term 4 2024	Week 3 Term 2 2025	Week 1 Term 3 2025
Note: Students must submit their Major Work journal with every Assessment Task for monitoring Completion & hand in date and submission date to NESAs to be confirmed for 2025				

2. Outcomes

A student:

EEX12-1: demonstrates a deep understanding of the dynamic relationships between text, composer, audience and context through the conceptualisation and execution of an extended composition using appropriate mode, medium and technology

EEX12-2: strategically and effectively manipulates language forms and features to create a substantial extended composition for a specific purpose, audience and context

EEX12-3: applies knowledge, understanding and insight, refined through analysis, interpretation, criticism and evaluation of strategically chosen texts, to shape new meaning in an original composition

EEX12-4: undertakes extensive independent investigation to articulate a personal perspective that explores, challenges, speculates or evaluates a significant experience, event or idea

EEX12-5: reflects on and evaluates the composition process and the effectiveness of their own published composition



PLUMPTON HIGH SCHOOL

Assessment Schedule 2024/2025

ENGLISH STANDARD

HSC Course

1. Assessment Schedule

COMPONENTS	SYLLABUS WEIGHTINGS	TASK 1 Common Module	TASK 2 Module A	TASK 3 Common Module, Module A & Module B	TASK 4 Module C
Knowledge and understanding of course content	50%	10%	15%	15%	10%
Skills in responding to texts and communication of ideas appropriate to audience, purpose and context across all modes	50%	15%	10%	10%	15%
TOTAL	100%	25%	25%	25%	25%
PROPOSED OUTCOMES TO BE ASSESSED		EN12-2 EN12-5 EN12-7	EN12-1 EN12-4 EN12-6 EN12-8	EN12-1 EN12-2 EN12-3 EN12-4 EN12-5 EN12-8	EN12-3 EN12-4 EN12-6 EN12-7 EN12-9
TYPE OF TASK		In Class Extended Response	Multimodal Task	Trial Examination	Extended Response and Reflection
DATE ISSUED		Week 4 Term 4 2024	Week 4 Term 1 2025	Week 4 Term 2 2025	Week 1 Term 3 2025
DATE DUE		Week 8 Term 4 2024	Week 10 Term 1 2025	Weeks 9-10 Term 2 2025	Week 5 Term 3 2025

2. Outcomes

A student:

- EN12-1 independently responds to and composes complex texts for understanding, interpretation, critical analysis, imaginative expression and pleasure
- EN12-2 uses, evaluates and justifies processes, skills and knowledge required to effectively respond to and compose texts in different modes, media and technologies
- EN12-3 analyses and uses language forms, features and structures of texts and justifies their appropriateness for purpose, audience and context and explains effects on meaning
- EN12-4 adapts and applies knowledge, skills and understanding of language concepts and literary devices into new and different contexts
- EN12-5 thinks imaginatively, creatively, interpretively, analytically and discerningly to respond to and compose texts that include considered and detailed information, ideas and arguments
- EN12-6 investigates and explains the relationships between texts
- EN12-7 explains and evaluates the diverse ways texts can represent personal and public worlds
- EN12-8 explains and assesses cultural assumptions in texts and their effects on meaning
- EN12-9 reflects on, assesses and monitors own learning and refines individual and collaborative processes as an independent learner



PLUMPTON HIGH SCHOOL

Assessment Schedule 2024/2025

ENGLISH STUDIES

HSC Course

1. Assessment Schedule

COMPONENTS	SYLLABUS WEIGHTINGS	TASK 1 Common Module	TASK 2 Module A	TASK 3 Common Module, Module A & Module B	TASK 4 Writing Portfolio All Modules
Knowledge and understanding of course content	50%	10%	10%	15%	15%
Skills in responding to texts and communication of ideas appropriate to audience, purpose and context across all modes	50%	10%	10%	5%	25%
TOTAL	100%	20%	20%	20%	40%
PROPOSED OUTCOMES TO BE ASSESSED		ES12-1 ES12-2 ES12-8 ES12-9	ES12-2 ES12-3 ES12-4 ES12-5	ES12-1 ES12-7 ES12-8 ES12-9	ES12-3 ES12-4 ES12-6 ES12-10
TYPE OF TASK		In Class Extended Response	Multimodal Task	In Class Response	Writing Portfolio
DATE ISSUED		Week 4 Term 4 2024	Week 3 Term 1 2025	Week 1 Term 2 2025	Week 1 Term 3 2025
DATE DUE		Week 8 Term 4 2024	Week 10 Term 1 2025	Week 6 Term 2 2025	Week 5 Term 3 2025

2. Outcomes

A student:

- ES12-1 comprehends and responds analytically and imaginatively to a range of texts, including short and extended texts, literary texts and texts from academic, community, workplace and social contexts for a variety of purposes
- ES12-2 identifies, uses and assesses strategies to comprehend increasingly complex and sustained written, spoken, visual, multimodal and digital texts that have been composed for different purposes and contexts
- ES12-3 accesses, comprehends and uses information to communicate in a variety of ways
- ES12-4 composes proficient texts in different forms
- ES12-5 develops knowledge, understanding and appreciation of how language is used, identifying and explaining specific language forms and features in texts that convey meaning to different audiences
- ES12-6 uses appropriate strategies to compose texts for different modes, media, audiences, contexts and purposes
- ES12-7 represents own ideas in critical, interpretive and imaginative texts
- ES12-8 understands and explains the relationships between texts
- ES12-9 identifies and explores ideas, values, points of view and attitudes expressed in texts, and explains ways in which texts may influence, engage and persuade different audiences
- ES12-10 monitors and reflects on own learning and adjusts individual and collaborative processes to develop as a more independent learner



PLUMPTON HIGH SCHOOL

Assessment Schedule 2024/2025 EXPLORING EARLY CHILDHOOD HSC Course

1. Assessment Schedule

COMPONENTS	SYLLABUS WEIGHTINGS	TASK 1	TASK 2	TASK 3
Knowledge and understanding of course content	50%	30%	10%	10%
Skills	50%		20%	30%
TOTAL	100%	30%	30%	40%
PROPOSED OUTCOMES TO BE ASSESSED		2.5 3.1 4.1	1.3 1.4 6.1	1.4 2.2 6.2
TYPE OF TASK		Behaviour Management Report	Practical and Evaluation Task	Presentation
DATE ISSUED		Week 4 Term 4 2024	Week 2 Term 1 2025	Week 3 Term 2 2025
DATE DUE		Week 7 Term 4 2024	Week 6 Term 1 2025	Week 6 Term 2 2025

2. Outcomes

A student:

- 1.1 analyses prenatal issues that have an impact on development
- 1.2 examines major physical, social-emotional, behavioural, cognitive and language development of young children
- 1.3 examines the nature of different periods in childhood — infant, toddler, preschool and the early school years
- 1.4 analyses the ways in which family, community and culture influence the growth and development of young children
- 1.5 examines the implications for growth and development when a child has special needs
- 2.1 analyses issues relating to the appropriateness of a range of services for different families
- 2.2 critically examines factors that influence the social world of young children
- 2.3 explains the importance of diversity as a positive issue for children and their families
- 2.4 analyses the role of a range of environmental factors that have an impact on the lives of young children
- 2.5 examines strategies that promote safe environments
- 3.1 evaluates strategies that encourage positive behaviour in young children
- 4.1 demonstrates appropriate communication skills with children and/or adults
- 4.2 interacts appropriately with children and adults from a wide range of cultural backgrounds
- 4.3 demonstrates appropriate strategies to resolve group conflict
- 5.1 analyses and compares information from a variety of sources to develop an understanding of child growth and development
- 6.1 demonstrates an understanding of decision making processes
- 6.2 critically examines all issues including beliefs and values that may influence interactions with others



PLUMPTON HIGH SCHOOL

Assessment Schedule 2024/2025

INDUSTRIAL TECHNOLOGY AUTOMOTIVE

HSC Course

1. Assessment Schedule

COMPONENTS	SYLLABUS WEIGHTINGS	TASK 1 Industry Study	TASK 2 MP Management	TASK 3 Trial HSC Examination
Knowledge and understanding of course content	40 %	30%		10%
Knowledge, skills in the design, management, communication and production of a major project	60%		40%	20%
TOTAL	100%	30%	40%	30%
PROPOSED OUTCOMES TO BE ASSESSED		H1.1, H1.2, H1.3, H7.1, H7.2	H3.2, H3.3, H4.1, H4.2, H5.1, H5.2	H1.2, H2.1, H3.1, H4.3, H6.1, H6.2
TYPE OF TASK		Report	Presentation	Trial Examination
DATE ISSUED		Week 3 Term 4 Year 2024	Week 2 Term 1 Year 2025	Week 7 Term 2 Year 2025
DATE DUE		Week 6 Term 4 Year 2024	Week 2 Term 2 Year 2025	Weeks 9-10 Term 2 Year 2025

2. Outcomes

A student:

- H1.1 investigates industry through the study of businesses in one focus area
- H1.2 identifies appropriate equipment, production and manufacturing techniques and describes the impact of new and developing technologies in industry
- H1.3 identifies important historical developments in the focus area industry
- H2.1 demonstrates proficiency in the use of safe working practices and workshop equipment maintenance techniques
- H3.1 demonstrates skills in sketching, producing and interpreting drawings
- H3.2 selects and applies appropriate research and problem-solving skills
- H3.3 applies and justifies design principles through the production of a Major Project
- H4.1 demonstrates competency in a range of practical skills appropriate to the Major Project
- H4.2 explores the need to outsource appropriate expertise where necessary to complement personal practical skills
- H4.3 critically applies knowledge and skills related to properties and characteristics of materials/components
- H5.1 selects and uses communication and information processing skills
- H5.2 examines and applies appropriate documentation techniques to project management
- H6.1 evaluates the characteristics of quality manufactured products
- H6.2 applies the principles of quality and quality control
- H7.1 explains the impact of the focus area industry on the social and physical environment
- H7.2 analyses the impact of existing, new and emerging technologies of the focus industry on society and the environment



PLUMPTON HIGH SCHOOL

Assessment Schedule 2024/2025

INDUSTRIAL TECHNOLOGY GRAPHICS

HSC Course

1. Assessment Schedule

COMPONENTS	SYLLABUS WEIGHTINGS	TASK 1 Industry Study	TASK 2 MP Management	TASK 3 Trial HSC Examination
Knowledge and understanding of course content	40%	30%		10%
Knowledge, skills in the design, management, communication and production of a major project	60%		40%	20%
TOTAL	100%	30%	40%	30%
PROPOSED OUTCOMES TO BE ASSESSED		H1.1, H1.2, H1.3, H7.1, H7.2	H3.2, H3.3, H4.1, H4.2, H5.1, H5.2	H1.2, H2.1, H3.1, H4.3, H6.1, H6.2
TYPE OF TASK		Report	Presentation	Trial Examination
DATE ISSUED		Week 3 Term 4 Year 2024	Week 2 Term 1 Year 2025	Week 7 Term 2 Year 2025
DATE DUE		Week 6 Term 4 Year 2024	Week 2 Term 2 Year 2025	Weeks 9-10 Term 2 Year 2025

2. Outcomes

A student:

- H1.1 investigates industry through the study of businesses in one focus area
- H1.2 identifies appropriate equipment, production and manufacturing techniques and describes the impact of new and developing technologies in industry
- H1.3 identifies important historical developments in the focus area industry
- H2.1 demonstrates proficiency in the use of safe working practices and workshop equipment maintenance techniques
- H3.1 demonstrates skills in sketching, producing and interpreting drawings
- H3.2 selects and applies appropriate research and problem-solving skills
- H3.3 applies and justifies design principles through the production of a Major Project
- H4.1 demonstrates competency in a range of practical skills appropriate to the Major Project
- H4.2 explores the need to outsource appropriate expertise where necessary to complement personal practical skills
- H4.3 critically applies knowledge and skills related to properties and characteristics of materials/components
- H5.1 selects and uses communication and information processing skills
- H5.2 examines and applies appropriate documentation techniques to project management
- H6.1 evaluates the characteristics of quality manufactured products
- H6.2 applies the principles of quality and quality control
- H7.1 explains the impact of the focus area industry on the social and physical environment
- H7.2 analyses the impact of existing, new and emerging technologies of the focus industry on society and the environment



PLUMPTON HIGH SCHOOL

Assessment Schedule 2024/2025

INDUSTRIAL TECHNOLOGY TIMBER - PRODUCTS AND FURNISHINGS

HSC Course

3. Assessment Schedule

COMPONENTS	SYLLABUS WEIGHTINGS	TASK 1 Industry Study	TASK 2 MP Management	TASK 3 Trial HSC Examination
Knowledge and understanding of course content	40%	30%		10%
Knowledge, skills in the design, management, communication and production of a major project	60%		40%	20%
TOTAL	100%	30%	40%	30%
PROPOSED OUTCOMES TO BE ASSESSED		H1.1, H1.2, H1.3, H7.1, H7.2	H3.2, H3.3, H4.1, H4.2, H5.1, H5.2	H1.2, H2.1, H3.1, H4.3, H6.1, H6.2
TYPE OF TASK		Report	Presentation	Trial Examination
DATE ISSUED		Week 3 Term 4 Year 2024	Week 2 Term 1 Year 2025	Week 7 Term 2 Year 2025
DATE DUE		Week 6 Term 4 Year 2024	Week 2 Term 2 Year 2025	Weeks 9-10 Term 2 Year 2025

2. Outcomes

A student:

- H1.1 investigates industry through the study of businesses in one focus area
- H1.2 identifies appropriate equipment, production and manufacturing techniques and describes the impact of new and developing technologies in industry
- H1.3 identifies important historical developments in the focus area industry
- H2.1 demonstrates proficiency in the use of safe working practices and workshop equipment maintenance techniques
- H3.1 demonstrates skills in sketching, producing and interpreting drawings
- H3.2 selects and applies appropriate research and problem-solving skills
- H3.3 applies and justifies design principles through the production of a Major Project
- H4.1 demonstrates competency in a range of practical skills appropriate to the Major Project
- H4.2 explores the need to outsource appropriate expertise where necessary to complement personal practical skills
- H4.3 critically applies knowledge and skills related to properties and characteristics of materials/components
- H5.1 selects and uses communication and information processing skills
- H5.2 examines and applies appropriate documentation techniques to project management
- H6.1 evaluates the characteristics of quality manufactured products
- H6.2 applies the principles of quality and quality control
- H7.1 explains the impact of the focus area industry on the social and physical environment
- H7.2 analyses the impact of existing, new and emerging technologies of the focus industry on society and the environment



PLUMPTON HIGH SCHOOL

Assessment Schedule 2024/2025

INVESTIGATING SCIENCE

HSC Course

1. Assessment Schedule

COMPONENTS	SYLLABUS WEIGHTINGS	TASK 1	TASK 2	TASK 3	TASK 4
Knowledge and understanding of module topics <ul style="list-style-type: none"> ▪ Scientific investigation ▪ Technologies ▪ Fact or Fallacy ▪ Science and Society 	40%	5%		30%	5%
Skills in: <ul style="list-style-type: none"> ▪ Questioning and predicting ▪ Communicating scientifically ▪ Processing data and information ▪ Analysing data and information ▪ Problem solving <ul style="list-style-type: none"> • Planning investigations • Conducting investigations 	60%	10%	20%	10%	20%
TOTAL	100%	15%	20%	40%	25%
PROPOSED OUTCOMES TO BE ASSESSED		INS12-3 INS12-5 INS12-12	INS12-3 INS12-4 INS12-5	INS12-4 INS12-5 INS12-12 INS12-13 INS12-14	INS12-1 INS12-3 INS12-4 INS12-7 INS12-15
TYPE OF TASK		Using secondary sources	Practical Task	Trial Examination	Depth Study
DATE ISSUED		Week 7 Term 4 2024	Week 6 Term 1 2025	Week 7 Term 2 2025	Week 10 Term 2 2025
DATE DUE		Week 10 Term 4 2024	Week 9 Term 1 2025	Weeks 9-10 Term 2 2025	Week 5 Term 3 2025

2. Outcomes

A student:

INS12-1 develops and evaluates questions and hypotheses for scientific investigation

INS12-2 designs and evaluates investigations in order to obtain primary and secondary data and information

INS12-3 conducts investigations to collect valid and reliable primary and secondary data and information

INS12-4 selects and processes appropriate qualitative and quantitative data and information using a range of appropriate media

INS12-5 analyses and evaluates primary and secondary data and information

INS12-7 communicates scientific understanding using suitable language and terminology for a specific audience or purpose

INS12-12 develops and evaluates the process of undertaking scientific investigations

INS12-13 describes and explains how science drives the development of technologies

INS12-14 uses evidence-based analysis in a scientific investigation to support or refute a hypothesis



PLUMPTON HIGH SCHOOL

Assessment Schedule 2024/2025

LEGAL STUDIES

HSC Course

1. Assessment Schedule

COMPONENTS	SYLLABUS WEIGHTINGS	TASK 1 Crime	TASK 2 Family Law	TASK 3 World Order	TASK 4 Trial Components
Knowledge and understanding of course content	40%	10%	10%	5%	15%
Analysis and Evaluation	20%	10%	5%		5%
Inquiry and Research	20%		10%	10%	
Communication of legal information, ideas and issues in appropriate forms	20%	5%		10%	5%
TOTAL	100%	25%	25%	25%	25%
PROPOSED OUTCOMES TO BE ASSESSED		H4,H6, H8, H9, H10	H1, H5, H8, H9, H10	H1,H2, H3, H9, H10	H1, H3, H7, H9, H10
TYPE OF TASK		Crime Report and Essay	Research Task	Contemporary Case Study	Trial Examination
DATE ISSUED		Week 2 Term 4 2024	Week 2 Term 1 2025	Week 1 Term 2 2025	Week 7 Term 2 2025
DATE DUE		Week 8 Term 4 2024	Week 8 Term 1 2025	Week 1 Term 3 2025	Weeks 9-10 Term 2 2025

2. Outcomes

A student:

- H1 identifies and applies legal concepts and terminology
- H2. describes and explains key features of and the relationship between Australian and international law
- H3. analyses the operation of domestic and international legal systems
- H4. evaluates the effectiveness of the legal system in addressing issues
- H5. explains the role of law in encouraging cooperation and resolving conflict, as well as initiating and responding to change
- H6. assesses the nature of the interrelationship between the legal system and society
- H7. evaluates the effectiveness of the law in achieving justice
- H8. locates, selects, organises, synthesises and analyses legal information from a variety of sources including legislation, cases, media, international instruments and documents
- H9. communicates legal information using well-structured and logical arguments
- H10. analyses differing perspectives and interpretations of legal information and issues.



PLUMPTON HIGH SCHOOL

Assessment Schedule 2024/2025 MATHEMATICS ADVANCED HSC Course

1. Assessment Schedule

COMPONENTS	SYLLABUS WEIGHTINGS	TASK 1	TASK 2	TASK 3	TASK 4
Understanding, Fluency and Communicating	50%	15%	10%	15%	10%
Problem Solving, Reasoning and Justification	50%	10%	15%	15%	10%
TOTAL	100%	25%	25%	30%	20%
PROPOSED OUTCOMES TO BE ASSESSED		MA12.3, MA12-6, MA12-7, MA12-8, MA12-9, MA12-10	MA12.1, MA12-5, MA12-8, MA12-9 MA12-10	ALL OUTCOMES	ALL OUTCOMES
TYPE OF TASK		Investigative Task with a Class Test	Open Book test	Trial Examination All Topics	Reasoning Task with Class test
DATE ISSUED		Week 7 Term 4 2024	Week 8 Term 1 2025	Week 7 Term 2 2025	Week 3 Term 3 2025
DATE DUE		Week 9 Term 4 2024	Week 10 Term 1 2025	Weeks 9-10 Term 2 2025	Week 5 Term 3 2025

2. Outcomes

A student:

- MA11-6 manipulates and solves expressions using the logarithmic and index laws, and uses logarithms and exponential functions to solve practical problems
- MA11-8 uses appropriate technology to investigate, organise, model and interpret information in a range of contexts
- MA11-9 provides reasoning to support conclusions which are appropriate to the context
- MA12-1 uses detailed algebraic and graphical techniques to critically construct, model and evaluate arguments in a range of familiar and unfamiliar contexts
- MA12-2 models and solves problems and makes informed decisions about financial situations using mathematical reasoning and techniques
- MA12-3 applies calculus techniques to model and solve problems
- MA12-4 applies the concepts and techniques of arithmetic and geometric sequences and series in the solution of problems
- MA12-5 applies the concepts and techniques of periodic functions in the solution of problems involving trigonometric graphs
- MA12-6 applies appropriate differentiation methods to solve problems
- MA12-7 applies the concepts and techniques of indefinite and definite integrals in the solution of problems
- MA12-8 solves problems using appropriate statistical processes
- MA12-9 chooses and uses appropriate technology effectively in a range of contexts, models and applies critical thinking to recognise appropriate times for such use
- MA12-10 constructs arguments to prove and justify results and provides reasoning to support conclusions which are appropriate to the context



PLUMPTON HIGH SCHOOL

Assessment Schedule 2024/2025 MATHEMATICS EXTENSION 1 HSC Course

1. Assessment Schedule

COMPONENTS	SYLLABUS WEIGHTINGS	TASK 1	TASK 2	TASK 3	TASK 4
Understanding, Fluency and Communicating	50%	15%	10%	15%	10%
Problem Solving, Reasoning and Justification	50%	10%	10%	20%	10%
TOTAL	100%	25%	20%	35%	20%
PROPOSED OUTCOMES TO BE ASSESSED		ME 12-1 ME 12-2 ME 12-6 ME 12-7	ME 12-1 ME 12-4 ME 12-5 ME 12-6 ME 12-7	All outcomes	All outcomes
TYPE OF TASK		Open Book Test	Investigative Task with a class test	Trial Examination	Class Test
DATE ISSUED		Week 7 Term 4 2024	Week 8 Term 1 2025	Week 7 Term 3 2025	Week 2 Term 3 2025
DATE DUE		Week 9 Term 4 2024	Week 10 Term 1 2025	Week 9/10 Term 2 2025	Week 4 Term 3 2025

2. Outcomes

A student:

ME12-1 applies techniques involving proof or calculus to model and solve problems

ME12-2 applies concepts and techniques involving vectors and projectiles to solve problems

ME12-3 applies advanced concepts and techniques in simplifying expressions involving compound angles and solving trigonometric equations

ME12-4 uses calculus in the solution of applied problems, including differential equations and volumes of solids of revolution

ME12-5 applies appropriate statistical processes to present, analyse and interpret data

ME12-6 chooses and uses appropriate technology to solve problems in a range of contexts

ME12-7 evaluates and justifies conclusions, communicating a position clearly in appropriate mathematical forms



PLUMPTON HIGH SCHOOL

Assessment Schedule 2024/2025 MATHEMATICS EXTENSION 2 HSC Course

2. Assessment Schedule

COMPONENTS	SYLLABUS WEIGHTINGS	TASK 1	TASK 2	TASK 3	TASK 4
Understanding, Fluency and Communicating	50%	10%	12%	15%	13%
Problem Solving, Reasoning and Justification	50%	10%	13%	15%	12%
TOTAL	100%	20%	25%	30%	25%
PROPOSED OUTCOMES TO BE ASSESSED		MEX12-1 MEX12-4 MEX12-7 MEX12-8	MEX12-1 MEX12-2 MEX12-3 MEX12-7 MEX12-8	ALL OUTCOMES	ALL OUTCOMES
TYPE OF TASK		Class Test N1	Investigation with a class test N1, N2	Trial HSC Examination P1, P2, V1, N1, N2, C1	Class Test C1, M1
DATE ISSUED		Week 8 Term 4 2024	Week 7 Term 1 2025	Week 7 Term 3 2025	Week 3 Term 3 2025
DATE DUE		Week 10 Term 4 2024	Week 9 Term 1 2025	Week 9/10 Term 2 2025	Week 5 Term 3 2025

2. Outcomes

A student:

MEX12-1 understands and uses different representations of numbers and functions to model, prove results and find solutions to problems in a variety of context

MEX12-2 chooses appropriate strategies to construct arguments and proofs in both practical and abstract settings

MEX12-3 uses vectors to model and solve problems in two and three dimensions

MEX12-4 uses the relationship between algebraic and geometric representations of complex numbers and complex number techniques to prove results, model and solve problems

MEX12-5 applies techniques of integration to structured and unstructured problems

MEX12-6 uses mechanics to model and solve practical problems

MEX12-7 applies various mathematical techniques and concepts to model and solve structured, unstructured and multi-step problems

MEX12-8 communicates and justifies abstract ideas and relationships using appropriate language, notation and logical argument



PLUMPTON HIGH SCHOOL

Assessment Schedule 2024/2025 MATHEMATICS STANDARD 2 HSC Course

1. Assessment Schedule

COMPONENTS	SYLLABUS WEIGHTINGS	TASK 1	TASK 2	TASK 3	TASK 4
Understanding, Fluency and Communicating	50%	10%	15%	15%	10%
Problem Solving, Reasoning and Justification	50%	10%	10%	15%	15%
TOTAL	100%	20%	25%	30%	25%
PROPOSED OUTCOMES TO BE ASSESSED		MS2-12-1 MS2-12-3 MS2-12-4 MS2-12-6 MS2-12-8 MS2-12-9 MS2-12-10	MS2-12-1 MS2-12-3 MS2-12-4 MS2-12-5 MS2-12-6 MS2-12-8 MS2-12-10	ALL OUTCOMES	ALL OUTCOMES
TYPE OF TASK		Investigative Task with a class test	Open Book Test	Trial Examination	Class Test
DATE ISSUED		Week 7 Term 4 2024	Week 8 Term 1 2025	Week 7 Term 2 2025	Week 3 Term 3 2025
DATE DUE		Week 9 Term 4 2024	Week 10 Term 1 2025	Weeks 9-10 Term 2 2025	Week 5 Term 3 2025

2. Outcomes

A student:

- MS2-12-1 uses detailed algebraic and graphical techniques to critically evaluate and construct arguments in a range of familiar and unfamiliar contexts
- MS2-12-2 analyses representations of data in order to make inferences, predictions and draw conclusions
- MS2-12-3 interprets the results of measurements and calculations and makes judgements about their reasonableness, including the degree of accuracy and the conversion of units where appropriate
- MS2-12-4 analyses two-dimensional and three-dimensional models to solve practical problems
- MS2-12-5 makes informed decisions about financial situations, including annuities and loan repayments
- MS2-12-6 solves problems by representing the relationships between changing quantities in algebraic and graphical forms
- MS2-12-7 solves problems requiring statistical processes, including the use of the normal distribution and the correlation of bivariate data
- MS2-12-8 solves problems using networks to model decision-making in practical problems
- MS2-12-9 chooses and uses appropriate technology effectively in a range of contexts, and applies critical thinking to recognise appropriate times and methods for such use
- MS2-12-10 uses mathematical argument and reasoning to evaluate conclusions, communicating a position clearly to others and justifying a response



PLUMPTON HIGH SCHOOL

Assessment Schedule 2024/2025 MATHEMATICS STANDARD 1 HSC Course

1. Assessment Schedule

COMPONENTS	SYLLABUS WEIGHTINGS	TASK 1	TASK 2	TASK 3	TASK 4
Understanding, Fluency and Communicating	50%	5%	15%	15%	15%
Problem Solving, Reasoning and Justification	50%	15%	10%	15%	10%
TOTAL	100%	20%	25%	30%	25%
PROPOSED OUTCOMES TO BE ASSESSED		MS1-12-3, MS1-12-4, MS1-12-8, MS1-12-9, MS1-12-10	MS1-12-1, MS1-12-2, MS1-12-4, MS1-12-5, MS1-12-6, MS1-12-8, MS1-12-10	ALLOUTCOMES	ALLOUTCOMES
TYPE OF TASK		Investigative Task with a in-class test	Open Book Test	Trial Examination	Investigative Task with a class test
DATE ISSUED		Week 7 Term 4 2024	Week 8 Term 1 2025	Weeks 7 Term 2 2025	Week 3 Term 3 2025
DATE DUE		Week 9 Term 4 2024	Week 10 Term 1 2025	Weeks 9-10 Term 2 2025	Week 5 Term 3 2025

2. Outcomes

A student:

- MS1-12-1 uses algebraic and graphical techniques to evaluate and construct arguments in a range of familiar and unfamiliar contexts
- MS1-12-2 analyses representations of data in order to make predictions and draw conclusions
- MS1-12-3 interprets the results of measurements and calculations and makes judgements about their reasonableness
- MS1-12-4 analyses simple two dimensional and three dimensional models to solve practical problems
- MS1-12-5 makes informed decisions about financial situations likely to be encountered post-school
- MS1-12-6 represents the relationships between changing quantities in algebraic and graphical forms
- MS1-12-7 solves problems requiring statistical processes
- MS1-12-8 applies network techniques to solve network problems
- MS1-12-9 chooses and uses appropriate technology effectively and recognises appropriate times for such use
- MS1-12-10 uses mathematical argument and reasoning to evaluate conclusions, communicating a position clearly to others



PLUMPTON HIGH SCHOOL

Assessment Schedule 2024/2025

MODERN HISTORY

HSC Course

1. Assessment Schedule

COMPONENTS	SYLLABUS WEIGHTINGS	TASK 1 Core	TASK 2 Peace	TASK 3 Component 1,2,3	TASK 4 Change
Knowledge and understanding of course content	40%	10%	5%	15%	10%
Historical skills in the analysis and evaluation of sources and interpretations	20%	10%		10%	
Historical inquiry and research	20%	5%	10%		5%
Communication of historical understanding in appropriate forms	20%	5%	5%	5%	5%
TOTAL	100%	30%	20%	30%	20%
PROPOSED OUTCOMES TO BE ASSESSED		MH12.2, MH12.3, MH12.4, MH12.6, MH12.7, MH12.9	MH12.3, MH12.4, MH12.6, MH12.8, MH12.9	MH12.3, MH12.5, MH12.6, MH12.7, MH12.9	MH12.1, MH12.5, MH12.8, MH12.9
TYPE OF TASK		Source Analysis and Responses	Take Home Essay	Trial Examination	In-class Task
DATE ISSUED		Week 5 Term 4 2024	Week 5 Term 1 2025	Week 7 Term 2 2025	Week 2 Term 3 2025
DATE DUE		Week 7 Term 4 2024	Week 7 Term 1 2025	Weeks 9-10 Term 2 2025	Week 4 Term 3 2025

2. Outcomes

A student:

MH12-1 accounts for the nature of continuity and change in the modern world

MH12-2 proposes arguments about the varying causes and effects of events and developments

MH12-3 evaluates the role of historical features, individuals, groups and ideas in shaping the past

MH12-4 analyses the different perspectives of individuals and groups in their historical context

MH12-5 assesses the significance of historical features, people, ideas, movements, events and developments of the modern world

MH12-6 analyses and interprets different types of sources for evidence to support an historical account or argument

MH12-7 discusses and evaluates differing interpretations and representations of the past

MH12-8 plans and conducts historical investigations and presents reasoned conclusions, using relevant evidence from a range of sources

MH12-9 communicates historical understanding, using historical knowledge, concepts and terms, in appropriate and well-structured forms



PLUMPTON HIGH SCHOOL

Assessment Schedule 2024/2025

MUSIC 1

HSC Course

1. Assessment Schedule

COMPONENTS	SYLLABUS WEIGHTINGS	TASK 1	TASK 2	TASK 3	TASK 4
Aural Core	25%	10%		15%	
Performance Core	10%		10%		
Composition Core	10%	10%			
Musicology Core	10%		10%		
Elective 1	15%			5%	10%
Elective 2	15%			5%	10%
Elective 3	15%			5%	10%
TOTAL	100%	20%	20%	30%	30%
PROPOSED OUTCOMES TO BE ASSESSED		H3,H4, H7, H8	H1, H2, H5, H6	Depending on Elective H1, H2, H3, H4, H5, H6, H7, H8	Depending on Elective H1, H2, H3, H4,H5, H6, H7, H8
TYPE OF TASK		Composition and Aural Analysis	Performance and Viva Voce	Trial Exam – Aural Paper and 3 Electives	Presentation of 3 Electives
DATE ISSUED		Week 1 Term 4 2024	Week 1 Term 1 2025	Week 1 Term 2 2025	Week 1 Term 3 2025
DATE DUE		Week 8 Term 4 2024	Week 8 Term 1 2025	Weeks 9-10 Term 2 2025	Week 4 Term 3 2025

2. Outcomes

A student:

- H1 performs stylistically, music that is characteristic of topics studied, both as a soloist and as a member of an ensemble
- H2 reads, interprets, discusses and analyses simple musical scores that are characteristic of the topics studied
- H3 improvises and composes music using the range of concepts for familiar sound sources reflecting the cultural and historical contexts studied
- H4 articulates an aural understanding of musical concepts and their relationships in a wide variety of musical styles
- H5 critically evaluates and discusses performances and composition
- H6 critically evaluates and discusses the use of the concepts of music in works representative of the topics studied and through wide listening
- H7 understands the capabilities of performing media, incorporates technologies into composition and performance as appropriate to the topics studied
- H8 identifies, recognises, experiments with, and discusses the use and effects of technology in music



PLUMPTON HIGH SCHOOL

Assessment Schedule 2024/2025

NUMERACY

HSC Course

1. Assessment Schedule

COMPONENTS	SYLLABUS WEIGHTINGS	TASK 1	TASK 2	TASK 3	TASK 4
Knowledge and Understanding	50%	15%	10%	15%	10%
Skills	50%	10%	15%	10%	15%
TOTAL	100%	25%	25%	25%	25%
PROPOSED OUTCOMES TO BE ASSESSED		N6-1.2, N6-2.4, N6-3.2	N6-1.3, N6-2.1, N6-2.5, N6-2.5	N6-2.3, N6-2.6, N6-3.2	N6-1.1, N6-2.2, N6-2.4, N6-3.1
TYPE OF TASK		Project task : Earning Money	Investigation Task Rule of Thirds	Project: Design your Game	Investigation: New Job, New Opportunity
DATE ISSUED		Week 7 Term 4 2024	Week 7 Term 1 2025	Week 4 Term 2 2025	Week 3 Term 3 2025
DATE DUE		Week 9 Term 4 2024	Week 9 Term 1 2025	Week 6 Term 2 2025	Week 5 Term 3 2025

2. Outcomes

A student:

- N6-1.1 recognises and applies functional numeracy concepts in practical situations, including personal and community, workplace and employment, and education and training contexts
- N6-1.2 applies numerical reasoning and mathematical thinking to clarify, efficiently solve and communicate solutions to problems
- N6-1.3 determines whether an estimate or an answer is reasonable in the context of a problem, evaluates results and communicates conclusions
- N6-2.1 chooses and applies appropriate operations with whole numbers, familiar fractions and decimals, percentages, rates and ratios to analyse and solve everyday problems
- N6-2.2 chooses and applies efficient strategies to analyse and solve everyday problems involving metric relationships, distance and length, area, volume, time, mass, capacity and temperature
- N6-2.3 chooses and applies efficient strategies to analyse and solve everyday problems involving data, graphs, tables, statistics and probability
- N6-2.4 chooses and applies efficient strategies to analyse and solve everyday problems involving money and finance
- N6-2.5 chooses and applies efficient strategies to analyse and solve everyday problems involving location, space and design
- N6-2.6 chooses and applies appropriate numeracy operations and techniques to analyse and resolve everyday situations
- N6-3.1 chooses and uses appropriate technology to access, organise and interpret information in a range of practical personal and community, workplace and employment, and education and training contexts
- N6-3.2 chooses and uses appropriate technology to analyse and solve problems, represent information and communicate solutions in a range of practical contexts



PLUMPTON HIGH SCHOOL

Assessment Schedule 2024/2025

PERSONAL DEVELOPMENT, HEALTH & PHYSICAL EDUCATION

(PDHPE)

HSC Course

1. Assessment Schedule

COMPONENTS	SYLLABUS WEIGHTINGS	TASK 1 Core 1	TASK 2 Core 2	TASK 3 Units 1-3	TASK 4 Option 1
Knowledge and understanding of course content	40%	10%	5%	20%	5%
Skills in critical thinking, research, analysis and communicating	60 %	15%	20%	10%	15%
TOTAL	100 %	25%	25%	30%	20%
PROPOSED OUTCOMES TO BE ASSESSED		H1, H2, H4, H16	H7, H8, H10, H17	H3, H5, H9, H11, H13, H14	H2, H6, H15, H16
TYPE OF TASK		In-class & presentation	Report Task	Trial Examination	Pamphlet & in-class
DATE ISSUED		Week 7 Term 4 2024	Week 3 Term 1 2025	Week 7 Term 2 2025	Week 3 Term 3 2025
DATE DUE		Week 10 Term 4 2024	Week 7 Term 1 2025	Weeks 9-10 Term 2 2025	Week 6 Term 3 2025

2. Outcomes

A student:

- H1 describes the nature and justifies the choice of Australia's health priorities
- H2 analyses and explains the health status of Australians in terms of current trends and groups most at risk
- H3 analyses the determinants of health and health inequities
- H4 argues the case for health promotion based on the Ottawa Charter
- H5 explains the different roles and responsibilities of individuals, communities and governments in addressing Australia's health priorities
- H6 demonstrates a range of personal health skills that enables them to promote and maintain health (Option 1)
- H7 explains the relationship between physiology and movement potential
- H8 explains how a variety of training approaches and other interventions enhance performance and safety in physical activity
- H9 explains how movement skill is acquired and appraised
- H10 designs and implements training plans to improve performance
- H11 designs psychological strategies and nutritional plans in response to individual performance needs
- H13 selects and applies strategies for the management of injuries and the promotion of safety in sport and physical activity (Option 3)
- H14 argues the benefits of health-promoting actions and choices that promote social justice
- H15 critically analyses key issues affecting the health of Australians and proposes ways of working towards better health for all
- H16 devises methods of gathering, interpreting and communicating information about health and physical activity concepts
- H17 selects appropriate options and formulates strategies based on a critical analysis of the factors that affect performance and safe participation



PLUMPTON HIGH SCHOOL

Assessment Schedule 2024/2025

PHYSICS

HSC Course

1. Assessment Schedule

COMPONENTS	SYLLABUS WEIGHTINGS	TASK 1 Module 5	TASK 2 Module 6	TASK 3 Module 5-7	TASK 4 Module 8
Knowledge and understanding of module topics: <ul style="list-style-type: none">Advanced MechanicsElectromagnetismThe Nature of LightFrom the Universe to the Atom	40%	10%	5%	20%	5%
Skills in: <ul style="list-style-type: none">Questioning and predictingCommunicating scientificallyProcessing data and informationAnalysing data and informationProblem SolvingPlanning investigationsConducting investigations	60%	25%	15%	10%	10%
TOTAL	100 %	35%	20%	30%	15%
PROPOSED OUTCOMES TO BE ASSESSED		PH12-1 PH12-5 PH12-6 PH12-7 PH12-12	PH12-2 PH12-3 PH12-4 PH12-5	PH12-4 PH12-5 PH12-12 PH12-13 PH12-14	PH12-4 PH12-5 PH12-7 PH12-15
TYPE OF TASK		Depth Study	Practical Task	Trial Examination	Secondary sources
DATE ISSUED		Week 3 Term 4 2024	Week 5 Term 1 2025	Week 7 Term 2 2025	Week 3 Term 3 2025
DATE DUE		Week 9 Term 4 2024	Week 8 Term 1 2025	Weeks 9-10 Term 2 2025	Week 6 Term 3 2025

2. Outcomes

A student:

- PH12-1 develops and evaluates questions and hypotheses for scientific investigation
- PH12-2 designs and evaluates investigations in order to obtain primary and secondary data and information
- PH12-3 conducts investigations to collect valid and reliable primary and secondary data and information
- PH12-4 selects and processes appropriate qualitative and quantitative data and information using a range of appropriate media
- PH12-5 analyses and evaluates primary and secondary data and information
- PH12-6 solves scientific problems using primary and secondary data, critical thinking skills and scientific processes
- PH12-7 communicates scientific understanding using suitable language and terminology for a specific audience or purpose
- PH12-12 describes and analyses qualitatively and quantitatively circular motion and motion in a gravitational field, in particular, the projectile motion of particles
- PH12-13 explains and analyses the electric and magnetic interactions due to charged particles and currents and evaluates their effect both qualitatively and quantitatively
- PH12-14 describes and analyses evidence for the properties of light and evaluates the implications of this evidence for modern theories of physics in the contemporary world
- PH12-15 explains and analyses the evidence supporting the relationship between astronomical events and the nucleosynthesis of atoms and relates these to the development of the current model of the atom



PLUMPTON HIGH SCHOOL

Assessment Schedule 2024/2025

SOCIETY & CULTURE

HSC Course

1. Assessment Schedule

COMPONENTS	SYLLABUS WEIGHTINGS	TASK 1 Personal Interest Project	TASK 2 Popular Culture	TASK 3 Trial Examination	TASK 4 Belief Systems & Ideologies
Knowledge and understanding of course content	50%		20%	20%	10%
Application and evaluation of social and cultural research methodologies	30%	20%		5%	5%
Communication of information, ideas and issues in appropriate forms	20%		10%	5%	5%
TOTAL	100%	20%	30%	30%	20%
PROPOSED OUTCOMES TO BE ASSESSED		H4, H6, H7, H8, H9, H10	H1, H5, H8, H9, H10	H1, H2, H3, H9, H10	H1, H5, H8, H9, H10
TYPE OF TASK		Viva Voce	Short Answer & Essay	Trial Examination	Research Task
DATE ISSUED		Week 5 Term 4 2024	Week 5 Term 1 2025	Week 7 Term 2 2025	Week 2 Term 3 2025
DATE DUE		Week 9 Term 4 2024	Week 8 Term 1 2025	Weeks 9-10 Term 2 2025	Week 5 Term 3 2025

2. Outcomes

A student:

- H1 evaluates and effectively applies social and cultural concepts
- H2 explains the development of personal, social and cultural identity
- H3 analyses relationships and interactions within and between social and cultural groups
- H4 assesses the interaction of personal experience and public knowledge in the development of social and cultural literacy
- H5 analyses continuity and change and their influence on personal and social futures
- H6 evaluates social and cultural research methods for appropriateness to specific research tasks
- H7 selects, organises, synthesises and analyses information from a variety of sources for usefulness, validity and bias
- H8 uses planning and review strategies to conduct ethical social and cultural research that is appropriate for tasks ranging from the simple to the complex
- H9 applies complex course language and concepts appropriate for a range of audiences and contexts
- H10 communicates complex information, ideas and issues using appropriate written, oral and graphic forms



PLUMPTON HIGH SCHOOL

Assessment Schedule 2024/2025

SOFTWARE ENGINEERING

HSC Course

1. Assessment Schedule

COMPONENTS	SYLLABUS WEIGHTINGS	TASK 1	TASK 2	TASK 3	TASK 4
Knowledge and understanding of course content	50%	10%	10%	15%	15%
Knowledge and skills in the design and development of software solutions	50%	10%	10%	15%	15%
TOTAL	100%	20 %	20%	30%	30%
PROPOSED OUTCOMES TO BE ASSESSED		SE-12-02, SE-12-03, SE-12-06, SE-12-07	SE-12-01, SE-12-04, SE-12-05, SE-12-08	SE-12-01, SE-12-04, SE-12-05, SE-12-06, SE-12-07	SE-12-01, SE-12-03, SE-12-04, SE-12-06, SE-12-09
TYPE OF TASK		Programming for the Web	Secure Software Architecture	Trial Examination	Software Engineering Project
DATE ISSUED		Week 2 Term 4 Year 2024	Week 2 Term 1 Year 2025	Week 6 Term 2 Year 2025	Week 10 Term 1 Year 2025
DATE DUE		Week 9 Term 4 2024	Week 8 Term 1 2025	Weeks 9-10 Term 2 2025	Week 3 Term 3 2025

2. Outcomes

A student:

SE-12-01 justifies methods used to plan, develop and engineer software solutions

SE-12-02 applies structural elements to develop programming code

SE-12-03 analyses how current hardware, software and emerging technologies influence the development of software engineering solutions

SE-12-04 evaluates practices to safely and securely collect, use and store data

SE-12-05 explains the social, ethical and legal implications of software engineering on the individual, society and the environment

SE-12-06 justifies the selection and use of tools and resources to design, develop, manage and evaluate software

SE-12-07 designs, develops and implements safe and secure programming solutions

SE-12-08 tests and evaluates language structures to refine code

SE-12-09 applies methods to manage and document the development of a software project



PLUMPTON HIGH SCHOOL

Assessment Schedule 2024/2025

SPORT, LIFESTYLE AND RECREATION STUDIES (SLR)

HSC Course

1. Assessment Schedule

COMPONENTS	SYLLABUS WEIGHTINGS	TASK 1 Fitness	TASK 2 Resistance Training	TASK 3 Sports Administration	TASK 4 Outdoor Recreation
Fitness	25%	25%			
Resistance Training	25%		25%		
Sports Administration	25%			25%	
Games and Sport Applications I and II	25%				25%
TOTAL	100%	25%	25%	25%	25%
PROPOSED OUTCOMES TO BE ASSESSED		1.2, 2.2, 2.5, 3.3	2.3, 3.2, 4.4, 5.4	1.3, 1.6, 4.2, 4.5	1.4, 2.3, 4.1
TYPE OF TASK		Analysis Task	Design Task	Planning Task	Research Task
DATE ISSUED		Week 4 Term 4 2024	Week 4 Term 1 2025	Week 2 Term 2 2025	Week 1 Term 3 2025
DATE DUE		Week 8 Term 4 2024	Week 8 Term 1 2025	Week 6 Term 2 2025	Week 4 Term 3 2025

2. Outcomes

A student:

- 1.1 applies the rules and conventions that relate to participation in a range of physical activities
- 1.2 explains the relationship between physical activity, fitness and healthy lifestyle
- 1.3 demonstrates ways to enhance safety in physical activity
- 1.6 describes administrative procedures that support successful performance outcomes
- 2.2 analyses the fitness requirements of specific activities
- 2.3 selects and participates in physical activities that meet individual needs, interests and abilities
- 2.5 describes the relationship between anatomy, physiology and performance
- 3.1 selects appropriate strategies and tactics for success in a range of movement contexts
- 3.2 designs programs that respond to performance needs
- 3.3 measures and evaluates physical performance capacity
- 4.2 demonstrates leadership skills and a capacity to work cooperatively in movement context
- 4.4 demonstrates competence and confidence in movement contexts
- 4.5 recognises the skills and abilities required to adopt roles that support health, safety and physical activity
- 5.2 willingly participates in regular physical activity
- 5.4 values the features of a quality performance
- 5.5 strives to achieve quality in personal performance



PLUMPTON HIGH SCHOOL

Assessment Schedule 2024/2025

VISUAL ARTS

HSC Course

1. Assessment Schedule

COMPONENTS	SYLLABUS WEIGHTINGS	TASK 1	TASK 2	TASK 3	TASK 4 Trial Exams
Art Making	50 %	15%		15%	20%
Critical and Historical Studies	50%	15%	15%		20%
TOTAL	100%	30 %	15 %	15 %	40%
PROPOSED OUTCOMES TO BE ASSESSED		H2, H4, H7, H8	H9, H10	H1, H3	H1, H2, H3, H4, H5, H6, H7, H8, H9, H10
TYPE OF TASK		A) BOW Proposal presentation. B) Written response	Case Study unseen artworks and extended written response	BOW Progress	Trial Examination BOW Trial Marking
DATE ISSUED		Week 2 Term 4 2024	Week 2 Term 1 2025	Week 9 Term 1 2025	Week 1 Term 2 2025
DATE DUE		Week 9 Term 4 2024	Week 5 Term 1 2025	Week 2 Term 2 2025	A) Week 9-10 Term 2 - Exam B) Week 3 Term 3 - BOW 2025

2. Outcomes

A student:

- H1 initiates and organises artmaking practice that is sustained, reflective and adapted to suit particular conditions
- H2 applies their understanding of the relationships among the artist, artwork, world and audience through the making of a body of work
- H3 demonstrates an understanding of the frames when working independently in the making of art
- H4 selects and develops subject matter and forms in particular ways as representations in artmaking
- H5 demonstrates conceptual strength in the production of a body of work that exhibits coherence and may be interpreted in a range of ways
- H6 demonstrates technical accomplishment, refinement and sensitivity appropriate to the artistic intentions within a body of work
- H7 applies their understanding of practice in art criticism and art history
- H8 applies their understanding of the relationships among the artist, artwork, world and audience
- H9 demonstrates an understanding of how the frames provide for different orientations to critical and historical investigations of art
- H10 constructs a body of significant art histories, critical narratives and other documentary accounts of representation in the visual arts



PLUMPTON HIGH SCHOOL

Assessment Schedule 2024/2025

VISUAL DESIGN

HSC Course

1. Assessment Schedule

COMPONENTS	SYLLABUS WEIGHTINGS	TASK 1	TASK 2	TASK 3
Designing and Making	70%	20%	25%	25%
Critical and Historical Studies	30%	15%		15%
TOTAL	100%	35%	25%	40%
PROPOSED OUTCOMES TO BE ASSESSED		DM1, DM3, DM5, CH1, CH3	DM2, DM3, DM4	DM1, DM5, DM6, CH2, CH4
TYPE OF TASK		ILLUSTRATION AND CARTOONING	INTERACTIVE AND MULTIMEDIA	INDUSTRIAL DESIGN , TRIAL EXAM
DATE ISSUED		Week 2 Term 4 2024	Week 4 Term 1 2025	Week 8 Term 2 2025
DATE DUE		Week 3 Term 1 2025	Week 6 Term 2 2025	Part A- Week 9/10 Term 2 2025 Part B- Week 3 Term 3

2. Outcomes

A student:

- DM1 generates a characteristic style that is increasingly self-reflective in their design practice
- DM2 explores concepts of artist/designer, kinds of designed works, interpretations of the world and audience/consumer response in their making of designed works
- DM3 investigates different points of view in the making of designed works
- DM4 generates images and ideas as representations/simulations
- DM5 develops different techniques suited to artistic and design intentions in the making of a range of works
- DM6 takes into account issues of Work Health and Safety in the making of a range of works
- CH1 generates in their critical and historical practice ways to interpret and explain design
- CH2 investigates the roles and relationships among the concepts of artist/designer, work, world and audience/consumer in critical and historical investigations
- CH3 distinguishes between different points of view, using the frames in their critical and historical investigations
- CH4 explores ways in which histories, narratives and other accounts can be built to explain practices and interests in the fields of design



PLUMPTON HIGH SCHOOL

Assessment Schedule 2024/2025

WORK STUDIES

HSC Course

1. Assessment Schedule

COMPONENTS	SYLLABUS WEIGHTINGS	TASK 1	TASK 2	TASK 3	TASK 4
Knowledge and understanding	30%	10%	5%	5%	10%
Skills	70%	15%	20%	15%	20%
TOTAL	100%	25%	25%	20%	30%
PROPOSED OUTCOMES TO BE ASSESSED		1,2,5	2,3,4,5	1,7,8	5,6,9
TYPE OF TASK		Topic Test	Job Application and Resume	Short Response Questions	Case study Analysis and Group Project
DATE ISSUED		Week 6 Term 4 2024	Week 4 Term 1 2025	Week 3 Term 2 2025	Week 2 Term 3 2025
DATE DUE		Week 8 Term 4 2024	Week 6 Term 1 2025	Week 5 Term 2 2025	Week 4 Term 3 2025

2. Outcomes

A student:

1. investigates a range of work environments
2. examines different types of work and skills for employment
3. analyses employment options and strategies for career management
4. assesses pathways for further education, training and life planning
5. communicates and uses technology effectively
6. applies self-management and teamwork skills
7. utilises strategies to plan, organise and solve problems
8. assesses influences on people's working lives
9. evaluates personal and social influences on individuals and groups

School Name: Plumpton High School

Assessment Schedule Year 12 – 2025

CONSTRUCTION PATHWAYS

Assessment Tasks for CPC20220 Certificate II in Construction Pathways (Release 6) & Statement of Attainment towards CPC20120 Certificate II in Construction (Release 3) Ongoing assessment of skills and knowledge is collected throughout the course and forms part of the evidence of competence of students.			Task 5 Option 5.1, 5.2 or 5.3	Task 6 Tools and equipment	Task 7 Group project	HSC TRIAL EXAM
Code	Unit of Competency	HSC Examinable Unit	Week: 8 Term 1 Date 27/03/25	Week: 6 Term 2 Date 26/06/25	Week: 9 Term 3 Date 18/09/25	Week: 9/10 Term 2 Date: 26/6/25
CPCCJN2001	Assemble components		X			
CPCCJN3004	Manufacture and assemble joinery		X			
CPCCCA2002	Use carpentry tools and equipment			X		
CPCCCM2005	Use construction tools and equipment	√		X		
CPCCCA2011	Handle carpentry materials			X		
CPCCVE1011	Undertake a basic construction project				X	
CPCCOM1012	Work effectively and sustainability in the construction industry	√			X	

Depending on the achievement of units of competency, the possible qualification outcome is a CPC20220 Certificate II in Construction Pathways (Release 6) & Statement of Attainment towards CPC20120 Certificate II in Construction (Release 3).

For students sitting the optional HSC exam, an estimated mark is required. This mark is to be an estimate of likely performance in the HSC examination and will reflect each student's achievement of tasks similar to the HSC examination, such as a trial HSC examination.

The assessment components in this course are competency based. Students must demonstrate they have gained the knowledge and skills of each unit of competency, to industry standards. Competency assessment is graded as “not yet competent” or “competent”. In some cases, other descriptive words may be used leading up to “competent”.

School Name: Plumpton High School

Assessment Schedule Year 12 - 2025

ENTERTAINMENT INDUSTRY

Assessment Tasks for Statement of Attainment towards CUA30420 Certificate III in Live Production and Technical Services Ongoing assessment of skills and knowledge is collected throughout the course and forms part of the evidence of competence of students.		Task 2 Plan a career	Task 5 Work in the industry	Task 6 To project and serve	Task 7 Showtime	HSC Trial Exam
		Week 6 Term 4	Week 6 Term 4	Week 4 Term 2	Week 9 Term 3	Week 9/10 Term 2
		Date 22/11/24	Date 22/11/24	Date 22/05/24	Date 19/09/25	Date 23/06/25
Code	Unit of Competency					HSC Examinable units of competency
CUAIND311	Work effectively in the creative arts industry		X			
SITXCCS006	Provide service to customers			X		
CUASOU306	Operate sound reinforcement systems			X		
CUAVSS312	Operate vision systems			X		
CUASTA311	Assist with production operations for live performances				X	
CUASMT311	Work effectively backstage during performances				X	
CUAIND314	Plan a career in the creative arts industry	Post WPL				

* Task 2 - Plan a career is not to be assessed prior to students having the opportunity to engage with industry and develop their knowledge of and pathways available post work placement.

The qualification outcome at the completion of Year 12 is a Statement of Attainment towards CUA30420 Certificate III in Live Production and Technical Services.

For students sitting the optional HSC exam, an estimated mark is required. This mark is to be an estimate of likely performance in the HSC examination and will reflect each student's achievement of tasks similar to the HSC examination, such as a trial HSC examination.

* Examinable units to be confirmed by teacher.

The assessment components in this course are competency based. Students must demonstrate they have gained the knowledge and skills of each unit of competency, to industry standards. Competency assessment is graded as “not yet competent” or “competent”. In some cases, other descriptive words may be used leading up to “competent”.

School Name: Plumpton High School

Assessment Schedule Year 12 - 2025

HOSPITALITY

Assessment Tasks for SIT20322 Certificate II in Hospitality <i>Ongoing assessment of skills and knowledge is collected throughout the course and forms part of the evidence of competence of students.</i>		Task 3 The hospitality industry	Task 4 Working in the hospitality industry	HSC TRIAL EXAM
		Week 6 Term 1 Date 2025	Week 7 Term 3 Date 2025	Week 9/10 Term 2 Date 23/06/25- 4/07/25
Code	Unit of Competency			
SITHIND006	Source and use information on the hospitality industry	X		
SITHFAB024	Prepare and serve non-alcoholic beverages		X	
SITHFAB025	Prepare and serve espresso coffee		X	
SITHFAB027	Serve food and beverages		X	
BSBTWK201	Work effectively with others		X	
SITHIND007	Use hospitality skills effectively		X	

Depending on the achievement of units of competency, the possible qualification outcome is a SIT20322 Certificate II in Hospitality.

For students sitting the optional HSC exam, an estimated mark is required. This mark is to be an estimate of likely performance in the HSC examination and will reflect each student’s achievement of tasks similar to the HSC examination, such as a trial HSC examination.

* Examinable units to be confirmed by teacher.

The assessment components in this course are competency based. Students must demonstrate they have gained the knowledge and skills of each unit of competency, to industry standards. Competency assessment is graded as “not yet competent” or “competent”. In some cases, other descriptive words may be used leading up to “competent”.

School Name: Plumpton High School

Assessment Schedule Year 12 - 2025

INFORMATION AND DIGITAL TECHNOLOGY

Assessment Tasks for ICT30120 Certificate III in Information Technology		Task 3 Security	Task 4 ICT Advice	Task 5 Programming	Task 6 Social ##	EXAM (Optional)
Ongoing assessment of skills and knowledge is collected throughout the course and forms part of the evidence of competence of students.		Week:	Week 10	Week 3	Week: 7	Week 9 & 10
		Term:	Term 4	Term 3	Term: 3	Term 2
		Date	Date 13/12/2024	Date 8/08/2025	Date 5/09/2025	Date Week 9/10
Code	Unit of Competency					
BSBXCS303	Securely manage personally identifiable information and workplace information	X				
ICTICT313	Identify IP, ethics and privacy policies in ICT environments	X				
ICTSAS305	Provide ICT advice to clients		X			
ICTSAS308	Run standard diagnostic tests		X			
ICTPRG302	Apply introductory programming techniques		X			
BSBCRT301	Develop and extend critical and creative thinking skills			X		
ICTICT214	Operate application software packages			X		
ICTWEB306	Develop web presence using social media ## This is an optional unit that MUST be undertaken to attain the full Certificate III qualification				X	

Depending on the achievement of units of competency, the possible qualification outcome is a ICT30120 Certificate III in Information Technology.

For students sitting the optional HSC exam, an estimated mark is required. This mark is to be an estimate of likely performance in the HSC examination and will reflect each student's achievement of tasks similar to the HSC examination, such as a trial HSC examination.

*** Examinable units to be confirmed by teacher**

The assessment components in this course are competency based. Students must demonstrate they have gained the knowledge and skills of each unit of competency, to industry standards. Competency assessment is graded as "not yet competent" or "competent". In some cases, other descriptive words may be used leading up to "competent".

School Name: Plumpton High School

Blended Assessment Schedule Year 11 – 2024

PRIMARY INDUSTRIES

Assessment Tasks for AHC20122 Certificate II in Agriculture			Task 5 Handle and Observe Livestock	Task 18 Soil
Ongoing assessment of skills and knowledge is collected throughout the course and forms part of the evidence of competence of students.			Week 1	Week 6
			Term 4	Term 4
Code	Unit of Competency	HSC Examinable Unit		
AHCWHS202	Participate in workplace health and safety processes	√		
AHCWRK212	Work effectively in industry	√		
AHCWRK213	Participate in workplace communications			
AHCMOM202	Operate tractors			
AHCMOM304	Operate machinery and equipment			
AHCBIO203	Inspect and clean machinery, tools and equipment to preserve biosecurity			
AHCLSK205	Handle livestock using basic techniques		X	
AHCLSK204	Carry out regular livestock observation		X	
AHCSOL203	Assist with soil or growing media sampling and testing			X
AHCPCM204	Recognise Plants			

Depending on the achievement of units of competency, the possible qualification outcome at the completion of Year 11 Statement of Attainment toward AHC20122 Certificate II in Agriculture.

The assessment components in this course are competency based. Students must demonstrate they have gained the knowledge and skills of each unit of competency, to industry standards. Competency assessment is graded as “not yet competent” or “competent”. In some cases, other descriptive words may be used leading up to “competent”.

School Name: Plumpton High School

Blended Assessment Schedule Year 12 – 2025

Assessment Tasks for AHC20122 Certificate II in Agriculture Ongoing assessment of skills and knowledge is collected throughout the course and forms part of the evidence of competence of students.			Task 6 Care for health and welfare of livestock	Task 7 Weather	Task 8 Chemicals and Weeds	Task 9 Environmentally Sustainable	Task 20 Care for Nursery Plants	HSC Trial EXAM (Optional)
Code	Unit of Competency	HSC Examinable Unit	Week 2 Term 1	Week 10 Term 1	Week 6 Term 2	Week 1 Term 3	Week 7 Term 3	Week 9-10 Term 2
AHCLSK202	Care for health and welfare of livestock	√	X					
AHCWRK210	Observe and report on weather	√		X				
AHCCHM201	Apply chemicals under supervision	√			X			
AHCPMG201	Treat weeds				X			
AHCWRK211	Participate in environmentally sustainable work practices	√				X		
AHCNSY206	Care for nursery plants						X	

Depending on the achievement of units of competency, the possible qualification outcome is a AHC20122 Certificate II in Agriculture.

For students sitting the optional HSC exam, an estimated mark is required. This mark is to be an estimate of likely performance in the HSC examination and will reflect each student’s achievement of tasks similar to the HSC examination, such as a trial HSC examination.

The assessment components in this course are competency based. Students must demonstrate they have gained the knowledge and skills of each unit of competency, to industry standards. Competency assessment is graded as “not yet competent” or “competent”. In some cases, other descriptive words may be used leading up to “competent”.

School Name: Plumpton High School

Student Competency HSC Assessment Schedule 2025

RETAIL SERVICES

Assessment Tasks for Certificate III in Retail SIR30216		Cluster D	Cluster E	Cluster F	Cluster G	Trial HSC Exam	
		Working in the Industry	Handling Stock	Merchandising to Sell	Sales and Security		
Date Due:		Week 7 Term 4	Week 7 Term 1	Week 6 Term 2	Week 6 Term 3	Week: 9 and 10 Term: 2	
Code	Unit of Competency					HSC Examinable Units of Competency	
SIRXIND001	Work effectively in a service environment	X					
SIRXIND002	Organise and maintain a store environment	X					
SIRRINV001	Receive and handle retail stock		X				
SIRRINV002	Control stock		X				
SIRRMER001	Produce visual merchandise displays			X			
SIRXPDK001	Advise on products and services			X			
SIRXRSK001	Identify and respond to security risks				X		
SIRXSLS001	Sell to the retail customer				X		
SIRXSLS002	Follow point-of-sale procedures				X		

Depending on the achievement of units of competency, the possible qualification outcome is a Certificate III in Retail SIR30216 or a Statement of Attainment towards a Certificate III in Retail SIR30216.

Schools will schedule exam items in preparation for the HSC. These do not form part of the RTO assessment requirements.

The assessment components in this course are competency based. This means that students need to demonstrate that they have gained and can apply the specific knowledge and skills of each unit of competency. Competency assessment is graded as “not yet competent” or “competent”. In some cases other descriptive words may be used leading up to “competent”. A course mark is not allocated.

HSC ASSESSMENT TIMELINE TERM 4 2024

TERM 4 2024		
Week 1	14 October	Primary Industries Task 5
Week 2	21 October	
Week 3	28 October	Visual Design Task 1
Week 4	4 November	
Week 5	6 November	
Week 6	11 November	Entertainment Industry Task 4 Entertainment Industry Task 5 Industrial Technology Automotive Task 1 Industrial Technology Graphics Task 1 Industrial Technology Timber Task 1 Primary Industries Task 18
Week 7	18 November	Aboriginal Studies Task 1 Exploring Early Childhood Task 1 Modern History Task 1 Retail Services Cluster D
Week 8	25 November	Ancient History Task 1 Engineering Studies Task 1 English Advanced Task 1 English Standard Task 1 English Studies Task 1 Legal Studies Task 1 Music 1 Task 1 SLR Task 1 Work Studies Task 1
Week 9	2 December	Agriculture Task 1 Business Studies Task 1 Chemistry Task 1 Dance Task 1 Drama Task 1 Earth and Environmental Science Task 1 English Extension 1 Task 1 English Extension 2 Task 2 Mathematics Advanced Task 1 Mathematics Extension 1 Task 1 Mathematics Standard 1 Task 1 Mathematics Standard 2 Task 1 Numeracy Task 1 Physics Task 1 Society & Culture Task 1 Software Engineering Task 1 Visual Arts Task 1
Week 10	9 December	Biology Task 1 CAFS Task 1 Information and Digital Technology Task 4 Investigating Science Task 1 Mathematics Extension 2 Task 1 PDHPE Task 1
Week 11	16 December	

HSC ASSESSMENT TIMELINE TERM 1 2025

TERM 1 2025		
Week 1	29 January	
Week 2	3 February	Primary Industries Task 6
Week 3	10 February	
Week 4	17 February	
Week 5	24 February	Visual Arts Task 2
Week 6	3 March	Engineering Studies Task 2 Exploring Early Childhood Task 2 Hospitality Task 3 Work Studies Task 2
Week 7	10 March	Ancient History Task 2 Modern History Task 2 PDHPE Task 2 Retail Services Cluster E
Week 8	17 March	Agriculture Task 2 Business Studies Task 2 Construction Task 5 Legal Studies Task 2 Music 1 Task 2 Physics Task 2 SLR Task 2 Society & Culture Task 2 Software Engineering Task 2
Week 9	24 March	Chemistry Task 2 Drama Task 2 Investigating Science Task 2 Mathematics Extension 2 Task 2 Numeracy Task 2
Week 10	31 March	CAFS Task 2 Dance Task 2 Earth and Environmental Science Task 2 English Advanced Task 2 English Standard Task 2 English Studies Task 2 Mathematics Advanced Task 2 Mathematics Extension 1 Task 2 Mathematics Standard 1 Task 2 Mathematics Standard 2 Task 2 Primary Industries Task 7
Week 11	7 April	Aboriginal Studies Task 2

HSC ASSESSMENT TIMELINE TERM 2 2025

TERM 2 2025		
Week 1	28 April	
Week 2	5 May	Industrial Technology Automotive Task 2 Industrial Technology Graphics Task 2 Industrial Technology Timber Task 2 Visual Arts Task 3
Week 3	12 May	English Extension 2 Task 2
Week 4	19 May	Entertainment Industry Task 6
Week 5	26 May	Work Studies Task 3
Week 6	2 June	Biology Task 2 Construction Task 6 Dance Task 3 English Extension 1 Task 2 English Studies Task 3 Exploring Early Childhood Task 3 Numeracy Task 3 Primary Industries Task 8 Retail Services Cluster F SLR Task 3 Visual Design Task 2
Week 7	9 June	Assessment Free Period
Week 8	16 June	Assessment Free Period
Week 9 & 10	23 June 30 June	Year 12 Trial Exams

HSC ASSESSMENT TIMELINE TERM 3 2025

TERM 3 2025		
Week 1	21 July	Drama Trial Examination – GDP and IP Task 4 English Extension Task 3 Engineering Studies Task 4 Legal Studies Task 3 Primary Industries Task 9
Week 2	28 July	Drama Trial Examination – GDP and IP Task 4
Week 3	4 August	Information and Digital Technology Task 5 Software Engineering Task 4 Visual Arts Task 4 Part B BOW Visual Design Task 3 Part B
Week 4	11 August	Agriculture Task 4 Mathematics Extension 1 Task 4 Modern History Task 4 Music 1 Task 4 SLR Task 4 Work Studies Task 4
Week 5	18 August	Aboriginal Studies Task 4 Ancient History Task 4 CAFS Task 4 English Advanced Task 4 English Standard Task 4 English Studies Task 4 Investigating Science Task 4 Mathematics Advanced Task 4 Mathematics Extension 2 Task 4 Mathematics Standard 1 Task 4 Mathematics Standard 2 Task 4 Numeracy Task 4 Society & Culture Task 4
Week 6	25 August	Biology Task 4 Business Studies Task 4 Chemistry Task 4 Earth and Environmental Science Task 4 PDHPE Task 4 Physics Task 4 Retail Services Cluster G
Week 7	1 September	Hospitality Task 4 Information and Digital Technology Task 6 Primary Industries Task 20
Week 8	8 September	
Week 9	15 September	Construction Task 7 Entertainment Industry Task 7
Week 10	22 September	